

DDB1 antibody [N1N3]

Cat. No. GTX100129

Host	Rabbit
Clonality	Polyclonal
Isotype	IgG
Application	WB, ICC/IF
Reactivity	Human, Mouse

Package

100 µl, 25 µl

APPLICATION

Application Note

*Optimal dilutions/concentrations should be determined by the researcher.

Suggested dilution	Recommended dilution
WB	1:500-1:10000
ICC/IF	1:100-1:1000

Not tested in other applications.

Calculated MW 127 kDa. ([Note](#))

PROPERTIES

Form	Liquid
Buffer	PBS, 20% Glycerol
Preservative	0.01% Thimerosal
Storage	Store as concentrated solution. Centrifuge briefly prior to opening vial. For short-term storage (1-2 weeks), store at 4°C. For long-term storage, aliquot and store at -20°C or below. Avoid multiple freeze-thaw cycles.
Concentration	1 mg/ml (Please refer to the vial label for the specific concentration.)
Immunogen	Recombinant protein encompassing a sequence within the center region of human DDB1. The exact sequence is proprietary.
Purification	Purified by antigen-affinity chromatography.
Conjugation	Unconjugated

Note

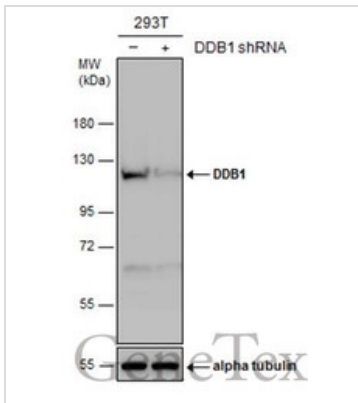
For laboratory research use only. Not for any clinical, therapeutic, or diagnostic use in humans or animals. Not for animal or human consumption.

Purchasers shall not, and agree not to enable third parties to, analyze, copy, reverse engineer or otherwise attempt to determine the structure or sequence of the product.



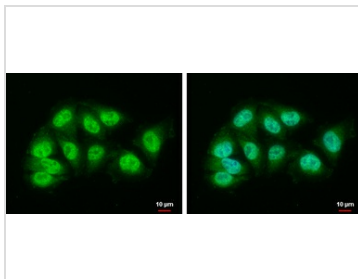
For full product information, images and publications, please visit our [website](#).

DATA IMAGES



GTX100129 WB Image

Non-transfected (-) and transfected (+) 293T whole cell extracts (30 µg) were separated by 7.5% SDS-PAGE, and the membrane was blotted with DDB1 antibody [N1N3] (GTX100129) diluted at 1:5000.



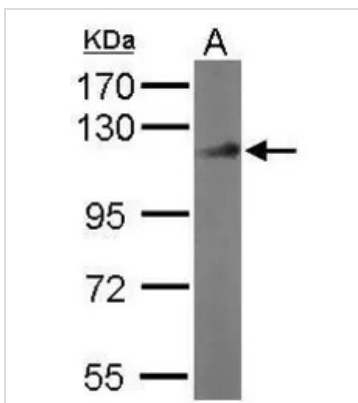
GTX100129 ICC/IF Image

DDB1 antibody [N1N3] detects DDB1 protein at nucleus and cytoplasm by immunofluorescent analysis.

Sample: A375 cells were fixed in 4% paraformaldehyde at RT for 15 min.

Green: DDB1 protein stained by DDB1 antibody [N1N3] (GTX100129) diluted at 1:500.

Blue: Hoechst 33342 staining.



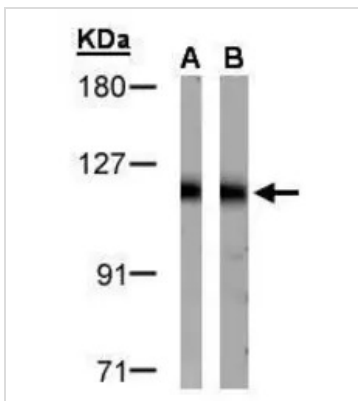
GTX100129 WB Image

Sample (50 µg of whole cell lysate)

A: Mouse brain

7.5% SDS PAGE

GTX100129 diluted at 1:1000



GTX100129 WB Image

Sample (30 µg of whole cell lysate)

A: HeLa S3 (GTX14654)

B: Raji (GTX27908)

7.5% SDS PAGE

GTX100129 diluted at 1:1000



For full product information, images and publications, please visit our [website](https://www.genetex.com).