

Respiratory Syncytial virus Nucleoprotein antibody [8B10]

Cat. No. GTX10016

Host	Mouse
Clonality	Monoclonal
Isotype	IgG2a
Applications	ELISA, Lateral Flow
Reactivity	Respiratory syncytial virus

Package
100 µg

Applications

Application Note

*Optimal dilutions/concentrations should be determined by the researcher.

Suggested dilution	Recommended dilution
ELISA	Assay dependent
Lateral Flow	Assay dependent

Not tested in other applications.

Product Note

This antibody is reacting well only with mature virions with completely assembled nucleocapsids. And this antibody is failing to recognize the N-protein epitope of immature and destroyed virions, which indicates on conformation dependence of the binding site.

Properties

Form	Liquid
Buffer	PBS
Preservative	0.09% Sodium azide
Storage	Store as concentrated solution. Centrifuge briefly prior to opening vial. Store at 4°C.
Concentration	Batch dependent (Please refer to the vial label for the specific concentration.)
Immunogen	Purified RSV, strain Long.
Purification	Protein G purified
Conjugation	Unconjugated

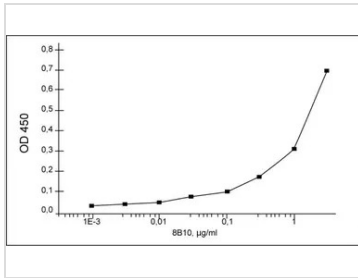
Note

For laboratory research use only. Not for any clinical, therapeutic, or diagnostic use in humans or animals. Not for animal or human consumption.

Purchasers shall not, and agree not to enable third parties to, analyze, copy, reverse engineer or otherwise attempt to determine the structure or sequence of the product.



For full product information, images and publications, please visit our [website](#).

DATA IMAGES

GTX10016 ELISA Image

Specific activity of Respiratory syncytial virus antibody [8B10] (GTX10016) in ELISA with purified RSV antigen



For full product information, images and publications, please visit our [website](https://www.genetex.com).