

# BCL7A antibody [C2C3], C-term

**Cat. No. GTX100197**

<b>Host</b>	Rabbit
<b>Clonality</b>	Polyclonal
<b>Isotype</b>	IgG
<b>Applications</b>	WB, ICC/IF, IHC-P
<b>Reactivity</b>	Human, Mouse, Rat

**Package**  
100 µl, 25 µl

## Applications

### Application Note

\*Optimal dilutions/concentrations should be determined by the researcher.

Suggested dilution	Recommended dilution
WB	1:500-1:3000
ICC/IF	1:100-1:1000
IHC-P	1:100-1:1000

Not tested in other applications.

**Calculated MW** 23 kDa. ( [Note](#) )

## Properties

<b>Form</b>	Liquid
<b>Buffer</b>	PBS, 20% Glycerol
<b>Preservative</b>	0.01% Thimerosal
<b>Storage</b>	Store as concentrated solution. Centrifuge briefly prior to opening vial. For short-term storage (1-2 weeks), store at 4°C. For long-term storage, aliquot and store at -20°C or below. Avoid multiple freeze-thaw cycles.
<b>Concentration</b>	1 mg/ml (Please refer to the vial label for the specific concentration.)
<b>Immunogen</b>	Carrier-protein conjugated synthetic peptide encompassing a sequence within the C-terminus region of human BCL7A. The exact sequence is proprietary.
<b>Purification</b>	Purified by antigen-affinity chromatography.
<b>Conjugation</b>	Unconjugated

### Note

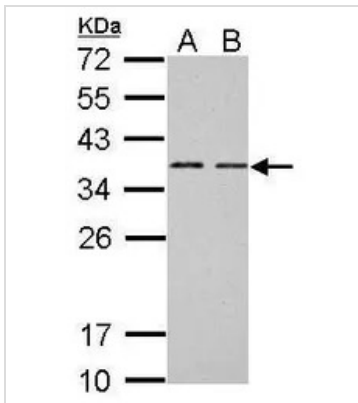
For laboratory research use only. Not for any clinical, therapeutic, or diagnostic use in humans or animals. Not for animal or human consumption.

Purchasers shall not, and agree not to enable third parties to, analyze, copy, reverse engineer or otherwise attempt to determine the structure or sequence of the product.



For full product information, images and publications, please visit our [website](#).

## DATA IMAGES



### GTx100197 WB Image

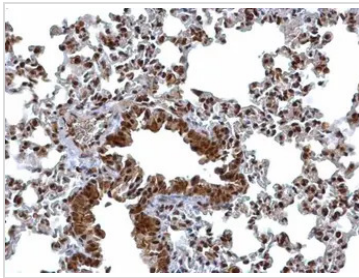
BCL7A antibody [C2C3], C-term detects BCL7A protein by Western blot analysis.

A. 30 µg Neuro2A whole cell lysate/extract

B. 30 µg GL261 whole cell lysate/extract

12 % SDS-PAGE

BCL7A antibody [C2C3], C-term (GTx100197) dilution: 1:1000



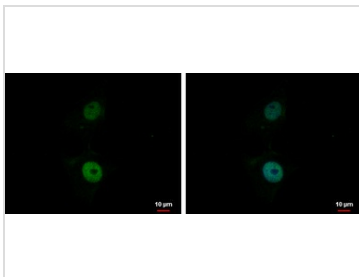
### GTx100197 IHC-P Image

BCL7A antibody [C2C3], C-term detects BCL7A protein at nucleus on mouse lung by immunohistochemical analysis.

Sample: Paraffin-embedded mouse lung.

BCL7A antibody [C2C3], C-term (GTx100197) dilution: 1:500.

Antigen Retrieval: Trilogy™ (EDTA based, pH 8.0) buffer, 15min



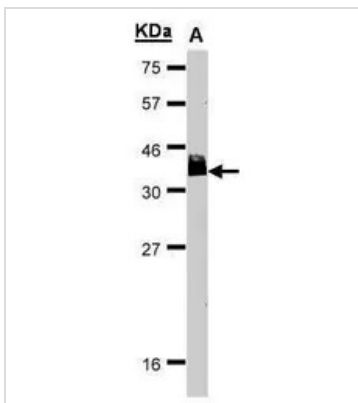
### GTx100197 ICC/IF Image

BCL7A antibody [C2C3], C-term detects BCL7A protein at nucleus by immunofluorescent analysis.

Sample: SKNSH cells were fixed in 4% paraformaldehyde at RT for 15 min.

Green: BCL7A protein stained by BCL7A antibody [C2C3], C-term (GTx100197) diluted at 1:1000.

Blue: Hoechst 33342 staining.



### GTx100197 WB Image

Sample(30 µg of whole cell lysate)

A:HeLa S3(GTx14654)

15% SDS PAGE

GTx100197 diluted at 1:1000



For full product information, images and publications, please visit our [website](https://www.genetex.com).