

# Cav beta 4 antibody [C3], C-term

**Cat. No. GTX100202**

<b>Host</b>	Rabbit
<b>Clonality</b>	Polyclonal
<b>Isotype</b>	IgG
<b>Applications</b>	WB, ICC/IF, IHC-P, IHC-Fr
<b>Reactivity</b>	Human, Mouse

**Package**  
100 µl, 25 µl

## Applications

### Application Note

\*Optimal dilutions/concentrations should be determined by the researcher.

Suggested dilution	Recommended dilution
WB	1:1000-1:10000
ICC/IF	1:100-1:1000
IHC-P	1:100-1:1000
IHC-Fr	1:100-1:1000

Not tested in other applications.

**Calculated MW** 58 kDa. ( [Note](#) )

## Properties

<b>Form</b>	Liquid
<b>Buffer</b>	PBS, 20% Glycerol
<b>Preservative</b>	0.01% Thimerosal
<b>Storage</b>	Store as concentrated solution. Centrifuge briefly prior to opening vial. For short-term storage (1-2 weeks), store at 4°C. For long-term storage, aliquot and store at -20°C or below. Avoid multiple freeze-thaw cycles.
<b>Concentration</b>	1 mg/ml (Please refer to the vial label for the specific concentration.)
<b>Immunogen</b>	Carrier-protein conjugated synthetic peptide encompassing a sequence within the C-terminus region of human Cav beta 4. The exact sequence is proprietary.
<b>Purification</b>	Purified by antigen-affinity chromatography.
<b>Conjugation</b>	Unconjugated



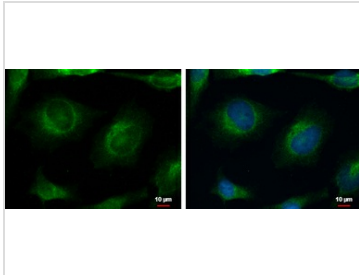
For full product information, images and publications, please visit our [website](#).

For laboratory research use only. Not for any clinical, therapeutic, or diagnostic use in humans or animals. Not for animal or human consumption.

**Note**

Purchasers shall not, and agree not to enable third parties to, analyze, copy, reverse engineer or otherwise attempt to determine the structure or sequence of the product.

## DATA IMAGES



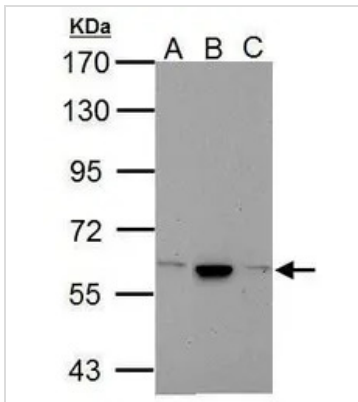
### GTx100202 ICC/IF Image

CACNB4 antibody [C3], C-term detects CACNB4 protein at cytoplasm by immunofluorescent analysis.

Sample: HeLa cells were fixed in 4% paraformaldehyde at RT for 15 min.

Green: CACNB4 protein stained by CACNB4 antibody [C3], C-term (GTx100202) diluted at 1:500.

Blue: Hoechst 33342 staining.



### GTx100202 WB Image

Sample (30 ug of whole cell lysate)

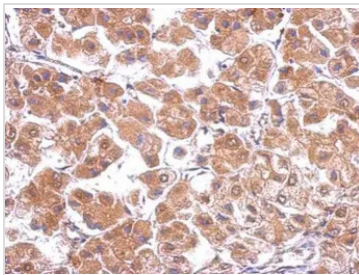
A: 293T

B: HepG2

C: A375

7.5% SDS PAGE

GTx100202 diluted at 1:5000



### GTx100202 IHC-P Image

Immunohistochemical analysis of paraffin-embedded human hepatoma, using CACNB4(GTx100202) antibody at 1:500 dilution.

Antigen Retrieval: Trilogy™ (EDTA based, pH 8.0) buffer, 15min



For full product information, images and publications, please visit our [website](https://www.genetex.com).