

Cannabinoid receptor 1 antibody [C1C2], Internal

Cat. No. GTX100219

| | |
|---------------------|--------------|
| Host | Rabbit |
| Clonality | Polyclonal |
| Isotype | IgG |
| Applications | IHC-P |
| Reactivity | Human, Mouse |

References (2)

Package

100 µl, 25 µl

Applications

Application Note

*Optimal dilutions/concentrations should be determined by the researcher.

| Suggested dilution | Recommended dilution |
|--------------------|----------------------|
| IHC-P | 1:100-1:1000 |

Not tested in other applications.

Properties

| | |
|----------------------|--|
| Form | Liquid |
| Buffer | PBS, 20% Glycerol |
| Preservative | 0.01% Thimerosal |
| Storage | Store as concentrated solution. Centrifuge briefly prior to opening vial. For short-term storage (1-2 weeks), store at 4°C. For long-term storage, aliquot and store at -20°C or below. Avoid multiple freeze-thaw cycles. |
| Concentration | 1 mg/ml (Please refer to the vial label for the specific concentration.) |
| Immunogen | Synthetic peptide encompassing a sequence within the Intracellular domain of human Cannabinoid Receptor 1. The exact sequence is proprietary. |
| Purification | Affinity purified by Protein A. |
| Conjugation | Unconjugated |

Note

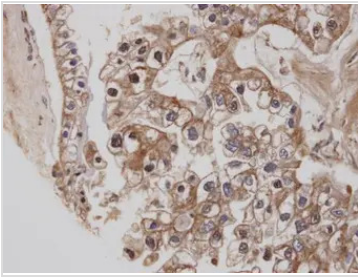
For laboratory research use only. Not for any clinical, therapeutic, or diagnostic use in humans or animals. Not for animal or human consumption.

Purchasers shall not, and agree not to enable third parties to, analyze, copy, reverse engineer or otherwise attempt to determine the structure or sequence of the product.



For full product information, images and publications, please visit our [website](#).

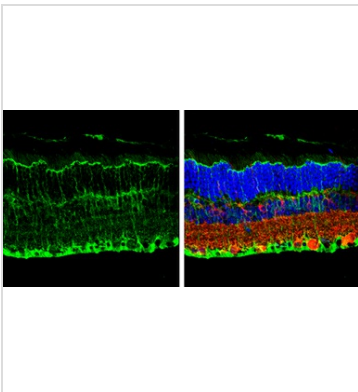
DATA IMAGES



GTX100219 IHC-P Image

Immunohistochemical analysis of paraffin-embedded human ovarian cancer, using CB1 (GTX100219) antibody at 1:100 dilution.

Antigen Retrieval: Trilogy™ (EDTA based, pH 8.0) buffer, 15min



GTX100219 IHC-P Image

Cannabinoid Receptor 1 antibody [C1C2], Internal detects Cannabinoid Receptor 1 protein by immunohistochemical analysis.

Samples: Paraffin-Embedded mouse retina.

Green: Cannabinoid Receptor 1 protein stained by Cannabinoid Receptor 1 antibody [C1C2], Internal (GTX100219) diluted at 1:250.

Red: beta Tubulin 3/ Tuj1, stained by beta Tubulin 3/ Tuj1 antibody [GT1338] (GTX631831) diluted at 1:500.

Blue: Fluoroshield with DAPI (GTX30920).

Antigen Retrieval: Citrate buffer, pH 6.0, 15 min



For full product information, images and publications, please visit our [website](#).