

DDB1 antibody [C3], C-term

Cat. No. GTX100232

Host	Rabbit
Clonality	Polyclonal
Isotype	IgG
Applications	WB, ICC/IF, IHC-P
Reactivity	Human, Mouse, Rat

References (3)

Package

100 µl, 25 µl

Applications

Application Note

*Optimal dilutions/concentrations should be determined by the researcher.

Suggested dilution	Recommended dilution
WB	1:500-1:10000
ICC/IF	1:100-1:1000
IHC-P	1:100-1:1000

Not tested in other applications.

Calculated MW	127 kDa. (Note)
Product Note	KO/KD validation is based on published data (PMID: 32085595).

Properties

Form	Liquid
Buffer	PBS, 20% Glycerol
Preservative	0.01% Thimerosal
Storage	Store as concentrated solution. Centrifuge briefly prior to opening vial. For short-term storage (1-2 weeks), store at 4°C. For long-term storage, aliquot and store at -20°C or below. Avoid multiple freeze-thaw cycles.
Concentration	1 mg/ml (Please refer to the vial label for the specific concentration.)
Immunogen	Carrier-protein conjugated synthetic peptide encompassing a sequence within the C-terminus region of human DDB1. The exact sequence is proprietary.
Purification	Purified by antigen-affinity chromatography.
Conjugation	Unconjugated

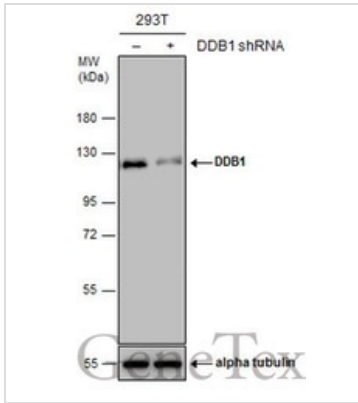


For full product information, images and publications, please visit our [website](#).

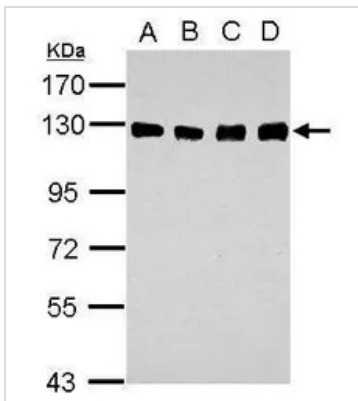
For laboratory research use only. Not for any clinical, therapeutic, or diagnostic use in humans or animals. Not for animal or human consumption.

Note

Purchasers shall not, and agree not to enable third parties to, analyze, copy, reverse engineer or otherwise attempt to determine the structure or sequence of the product.

DATA IMAGES

GTx100232 WB Image

Non-transfected (-) and transfected (+) 293T whole cell extracts (30 µg) were separated by 7.5% SDS-PAGE, and the membrane was blotted with DDB1 antibody [C3], C-term (GTx100232) diluted at 1:10000. The HRP-conjugated anti-rabbit IgG antibody (GTx213110-01) was used to detect the primary antibody.


GTx100232 WB Image

Sample (30 µg of whole cell lysate)

A: A549

B: H1299

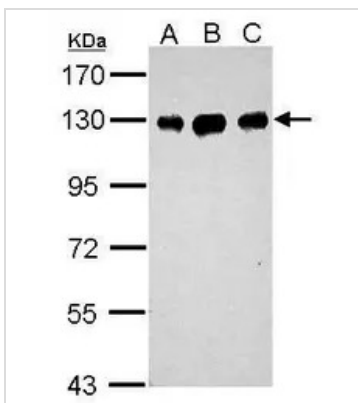
C: HCT116

D: MCF-7

7.5% SDS PAGE

GTx100232 diluted at 1:1000

The HRP-conjugated anti-rabbit IgG antibody (GTx213110-01) was used to detect the primary antibody.


GTx100232 WB Image

Sample (30 µg of whole cell lysate)

A: Neuro2A

B: GL261

C: C8D30

7.5% SDS PAGE

GTx100232 diluted at 1:1000

The HRP-conjugated anti-rabbit IgG antibody (GTx213110-01) was used to detect the primary antibody.



For full product information, images and publications, please visit our [website](http://www.genetex.com).