

# LC3B antibody

**Cat. No. GTX100240**

<b>Host</b>	Rabbit
<b>Clonality</b>	Polyclonal
<b>Isotype</b>	IgG
<b>Applications</b>	WB, IHC-P
<b>Reactivity</b>	Human, Mouse, Rat

References ( 4 )

★★★★★ Review ( 1 )

Package

100 µl, 25 µl

## Applications

### Application Note

\*Optimal dilutions/concentrations should be determined by the researcher.

Suggested dilution	Recommended dilution
WB	1:500-1:10000
IHC-P	1:100-1:1000

Not tested in other applications.

**Calculated MW** 16 kDa. ( [Note](#) )

## Properties

<b>Form</b>	Liquid
<b>Buffer</b>	PBS, 20% Glycerol
<b>Preservative</b>	0.01% Thimerosal
<b>Storage</b>	Store as concentrated solution. Centrifuge briefly prior to opening vial. For short-term storage (1-2 weeks), store at 4°C. For long-term storage, aliquot and store at -20°C or below. Avoid multiple freeze-thaw cycles.
<b>Concentration</b>	1 mg/ml (Please refer to the vial label for the specific concentration.)
<b>Immunogen</b>	Full length rat LC3B Recombinant protein.
<b>Purification</b>	Purified by antigen-affinity chromatography.
<b>Conjugation</b>	Unconjugated

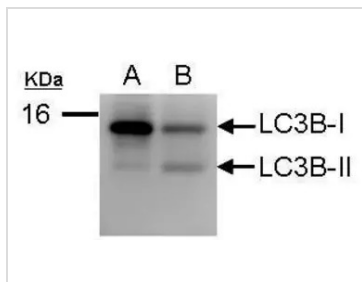
### Note

For laboratory research use only. Not for any clinical, therapeutic, or diagnostic use in humans or animals. Not for animal or human consumption.

Purchasers shall not, and agree not to enable third parties to, analyze, copy, reverse engineer or otherwise attempt to determine the structure or sequence of the product.



For full product information, images and publications, please visit our [website](#).

**DATA IMAGES**

**GTX100240 WB Image**

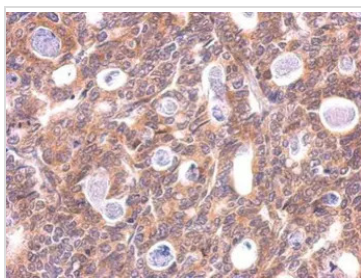
Sample (50 ug of whole cell lysate)

A: Huh7

B: virus infected Huh7

12% SDS PAGE

GTX100240 diluted at 1:1000

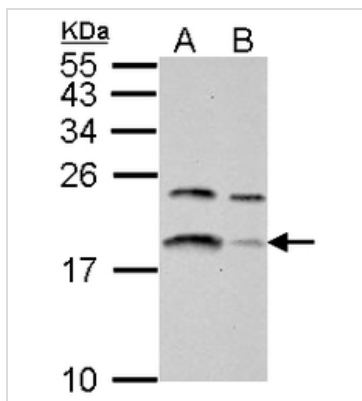

**GTX100240 IHC-P Image**

LC3B antibody detects LC3B protein at cytosol on human gastric carcinoma by immunohistochemical analysis.

Sample: Paraffin-embedded gastric carcinoma.

LC3B antibody (GTX100240) dilution: 1:500.

Antigen Retrieval: Trilogy™ (EDTA based, pH 8.0) buffer, 15min


**GTX100240 WB Image**

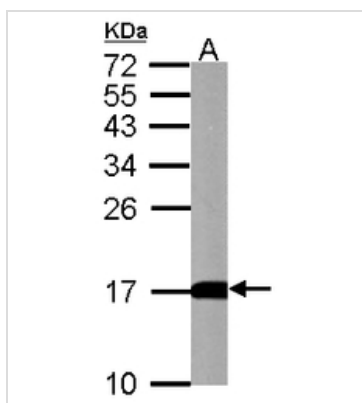
LC3B antibody detects LC3B protein by western blot analysis.

A. 30 µg U87-MG whole cell lysate/extract

B. 30 µg SK-N-SH whole cell lysate/extract

15 % SDS-PAGE

LC3B antibody (GTX100240) dilution: 1:500


**GTX100240 WB Image**

LC3B antibody detects LC3B protein by western blot analysis.

A. 50 µg mouse brain lysate/extract

15 % SDS-PAGE

LC3B antibody (GTX100240) dilution: 1:500



For full product information, images and publications, please visit our [website](http://www.genetex.com).