

ERG antibody [C3], C-term

Cat. No. GTX100257

Host	Rabbit
Clonality	Polyclonal
Isotype	IgG
Applications	WB, ICC/IF
Reactivity	Human, Mouse

Package
100 µl, 25 µl

Applications

Application Note

*Optimal dilutions/concentrations should be determined by the researcher.

Suggested dilution	Recommended dilution
WB	1:1000-1:10000
ICC/IF	1:100-1:1000

Not tested in other applications.

Calculated MW 55 kDa. ([Note](#))

Properties

Form	Liquid
Buffer	PBS, 20% Glycerol
Preservative	0.01% Thimerosal
Storage	Store as concentrated solution. Centrifuge briefly prior to opening vial. For short-term storage (1-2 weeks), store at 4°C. For long-term storage, aliquot and store at -20°C or below. Avoid multiple freeze-thaw cycles.
Concentration	1 mg/ml (Please refer to the vial label for the specific concentration.)
Immunogen	Carrier-protein conjugated synthetic peptide encompassing a sequence within the C-terminus region of human ERG. The exact sequence is proprietary.
Purification	Affinity purified by protein A.
Conjugation	Unconjugated

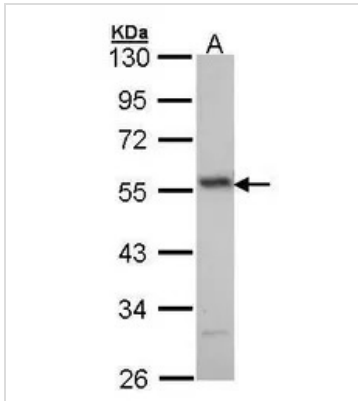
Note

For laboratory research use only. Not for any clinical, therapeutic, or diagnostic use in humans or animals. Not for animal or human consumption.

Purchasers shall not, and agree not to enable third parties to, analyze, copy, reverse engineer or otherwise attempt to determine the structure or sequence of the product.



For full product information, images and publications, please visit our [website](#).

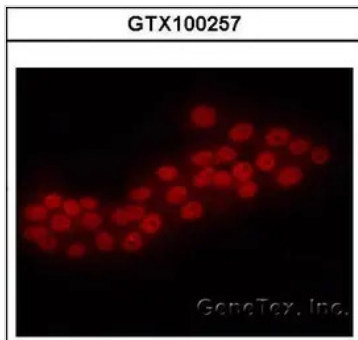
DATA IMAGES

GTX100257 WB Image

Sample (30 ug of whole cell lysate)

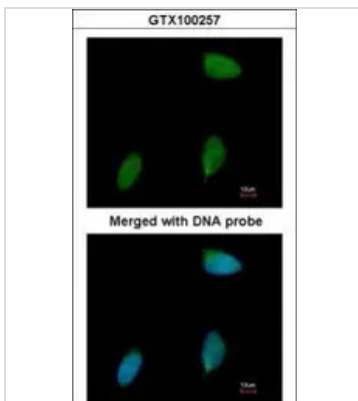
A: H1299

10% SDS PAGE

GTX100257 diluted at 1:1000


GTX100257 ICC/IF Image

Immunofluorescence analysis of human pancreatic cancer cell line, using ERG(GTX100257) antibody at 1:50 dilution.


GTX100257 ICC/IF Image

Immunofluorescence analysis of paraformaldehyde-fixed human pancreatic cancer cell line, using ERG(GTX100257) antibody at 1:50 dilution.



For full product information, images and publications, please visit our [website](#).