

FACL4 antibody [C3], C-term

Cat. No. GTX100260

Host	Rabbit
Clonality	Polyclonal
Isotype	IgG
Applications	WB, ICC/IF, IHC-P, IP
Reactivity	Human, Mouse, Rat

References (10)

★ ★ ★ ★ ★ Review (1)

Package

100 µl, 25 µl

Applications

Application Note

*Optimal dilutions/concentrations should be determined by the researcher.

Suggested dilution	Recommended dilution
WB	1:500-1:10000
ICC/IF	1:100-1:1000
IHC-P	1:100-1:1000
IP	1:1000-1:5000

Not tested in other applications.

Calculated MW 79 kDa. ([Note](#))

Properties

Form	Liquid
Buffer	PBS, 20% Glycerol
Preservative	0.025% ProClin 300
Storage	Store as concentrated solution. Centrifuge briefly prior to opening vial. For short-term storage (1-2 weeks), store at 4°C. For long-term storage, aliquot and store at -20°C or below. Avoid multiple freeze-thaw cycles.
Concentration	1.37 mg/ml (Please refer to the vial label for the specific concentration.)
Immunogen	Carrier-protein conjugated synthetic peptide encompassing a sequence within the C-terminus region of human FACL4. The exact sequence is proprietary.
Purification	Purified by antigen-affinity chromatography.
Conjugation	Unconjugated

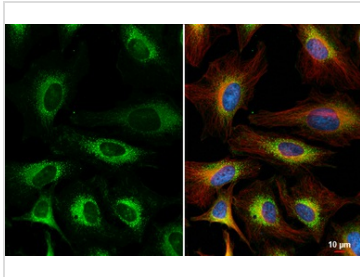


For full product information, images and publications, please visit our [website](#).

For laboratory research use only. Not for any clinical, therapeutic, or diagnostic use in humans or animals. Not for animal or human consumption.

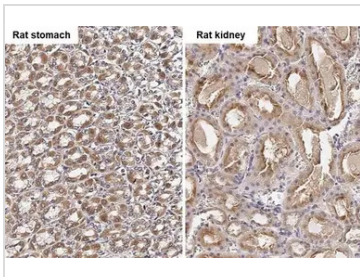
Note
 Purchasers shall not, and agree not to enable third parties to, analyze, copy, reverse engineer or otherwise attempt to determine the structure or sequence of the product.

DATA IMAGES



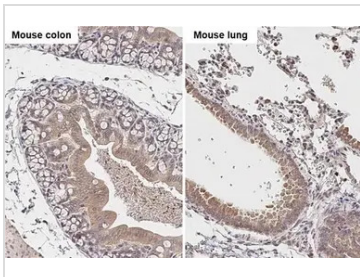
GTX100260 ICC/IF Image

FACL4 antibody [C3], C-term detects FACL4 protein at cytoplasm by immunofluorescent analysis.
 Sample: HeLa cells were fixed in 4% paraformaldehyde at RT for 15 min.
 Green: FACL4 stained by FACL4 antibody [C3], C-term (GTX100260) diluted at 1:500.
 Red: alpha Tubulin, a cytoskeleton marker, stained by alpha Tubulin antibody [GT114] (GTX628802) diluted at 1:1000.
 Blue: Fluoroshield with DAPI (GTX30920).



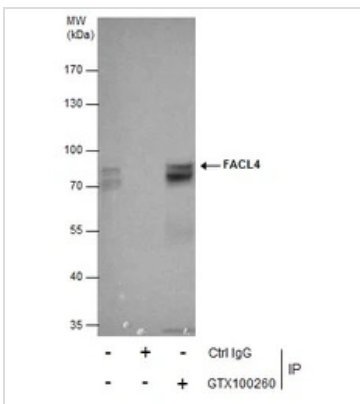
GTX100260 IHC-P Image

FACL4 antibody [C3], C-term detects FACL4 protein by immunohistochemical analysis.
 Sample: Paraffin-embedded rat tissues.
 FACL4 stained by FACL4 antibody [C3], C-term (GTX100260) diluted at 1:500.
 Antigen Retrieval: Citrate buffer, pH 6.0, 15 min



GTX100260 IHC-P Image

FACL4 antibody [C3], C-term detects FACL4 protein by immunohistochemical analysis.
 Sample: Paraffin-embedded mouse tissues.
 FACL4 stained by FACL4 antibody [C3], C-term (GTX100260) diluted at 1:500.
 Antigen Retrieval: Citrate buffer, pH 6.0, 15 min



GTX100260 IP Image

Immunoprecipitation of FACL4 protein from HeLa whole cell extracts using 5 µg of FACL4 antibody [C3], C-term (GTX100260).
 Western blot analysis was performed using FACL4 antibody [C3], C-term (GTX100260) diluted at 1:500.
 EasyBlot HRP-conjugated anti rabbit IgG antibody (GTX221666-01) was used to detect the primary antibody.



For full product information, images and publications, please visit our [website](#).