

C Reactive Protein antibody [C3]

Cat. No. GTX10027

Host	Mouse
Clonality	Monoclonal
Isotype	IgG1
Applications	ELISA, IHC, Purification, Turbidimetry
Reactivity	Human

Package
100 µg

Applications

Application Note

*Optimal dilutions/concentrations should be determined by the researcher.

Suggested dilution	Recommended dilution
ELISA	Assay dependent
IHC	Assay dependent
Purification	Assay dependent
Turbidimetry	Assay dependent

Not tested in other applications.

Properties

Form	Liquid
Buffer	PBS
Preservative	0.09% Sodium azide
Storage	Store as concentrated solution. Centrifuge briefly prior to opening vial. Store at 4°C.
Concentration	Batch dependent (Please refer to the vial label for the specific concentration.)
Immunogen	Human CRP, derived from pleural/ascetic fluid or plasma.
Purification	Protein A purified
Conjugation	Unconjugated

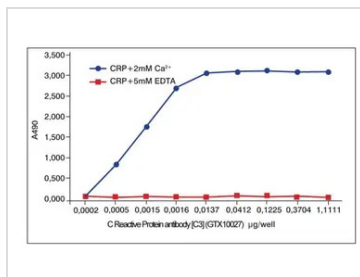
Note

For laboratory research use only. Not for any clinical, therapeutic, or diagnostic use in humans or animals. Not for animal or human consumption.

Purchasers shall not, and agree not to enable third parties to, analyze, copy, reverse engineer or otherwise attempt to determine the structure or sequence of the product.



For full product information, images and publications, please visit our [website](#).

DATA IMAGES

GTx10027 ELISA Image

Interaction of C Reactive Protein antibody [C3] (GTx10027) with human native CRP in direct ELISA. 100 ng of native CRP per well was coated onto wells in Tris-buffered saline, containing 2 mM CaCl₂ or 5 mM EDTA.



For full product information, images and publications, please visit our [website](https://www.genetex.com).