

FOX M1 antibody [C3], C-term

Cat. No. GTX100276

| | |
|--------------|----------------|
| Host | Rabbit |
| Clonality | Polyclonal |
| Isotype | IgG |
| Applications | WB, ChIP assay |
| Reactivity | Human |

References (10)

Package

100 µl, 25 µl

Applications

Application Note

*Optimal dilutions/concentrations should be determined by the researcher.

| Suggested dilution | Recommended dilution |
|--------------------|----------------------|
| WB | 1:1000-1:10000 |
| ChIP assay | Assay dependent |

Not tested in other applications.

Calculated MW 84 kDa. ([Note](#))

Product Note KO/KD validation is based on published data (PMID: 26136074).

Properties

| | |
|---------------|--|
| Form | Liquid |
| Buffer | PBS, 20% Glycerol |
| Preservative | 0.025% ProClin 300 |
| Storage | Store as concentrated solution. Centrifuge briefly prior to opening vial. For short-term storage (1-2 weeks), store at 4°C. For long-term storage, aliquot and store at -20°C or below. Avoid multiple freeze-thaw cycles. |
| Concentration | 1.52 mg/ml (Please refer to the vial label for the specific concentration.) |
| Immunogen | Carrier-protein conjugated synthetic peptide encompassing a sequence within the C-terminus region of human FOX M1. The exact sequence is proprietary. |
| Purification | Purified by antigen-affinity chromatography. |
| Conjugation | Unconjugated |

Note

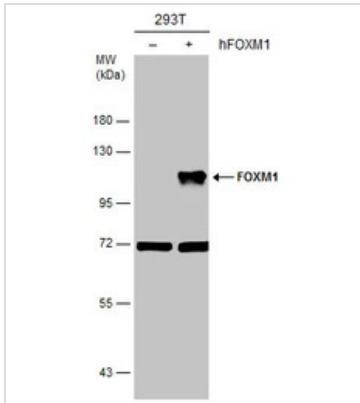
For laboratory research use only. Not for any clinical, therapeutic, or diagnostic use in humans or animals. Not for animal or human consumption.

Purchasers shall not, and agree not to enable third parties to, analyze, copy, reverse engineer or otherwise attempt to determine the structure or sequence of the product.



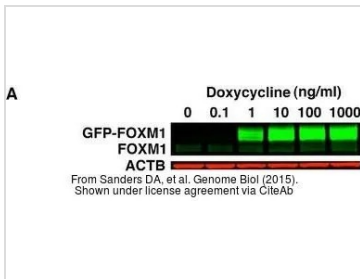
For full product information, images and publications, please visit our [website](#).

DATA IMAGES



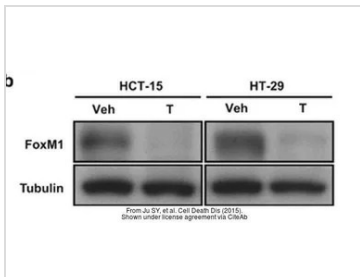
GTX100276 WB Image

Non-transfected (-) and transfected (+) 293T whole cell extracts (30 µg) were separated by 7.5% SDS-PAGE, and the membrane was blotted with FOXM1 antibody [C3], C-term (GTX100276) diluted at 1:5000.



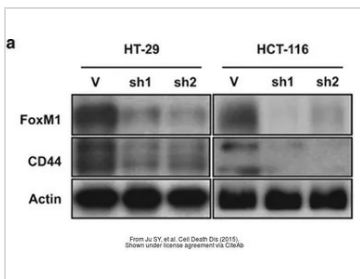
GTX100276 WB Image

The data was published in the journal Genome Biol in 2015. [PMID: 26100407](https://pubmed.ncbi.nlm.nih.gov/26100407/)



GTX100276 WB Image

The data was published in the journal Cell Death Dis in 2015. [PMID: 26136074](https://pubmed.ncbi.nlm.nih.gov/26136074/)



GTX100276 WB Image

The data was published in the journal Cell Death Dis in 2015. [PMID: 26136074](https://pubmed.ncbi.nlm.nih.gov/26136074/)



For full product information, images and publications, please visit our [website](https://www.genetex.com).