

GAD65 antibody [C2C3], C-term

Cat. No. GTX100281

Host	Rabbit
Clonality	Polyclonal
Isotype	IgG
Applications	WB, ICC/IF, IHC-P, IHC-Fr
Reactivity	Human, Mouse, Rat

Package
100 µl, 25 µl

Applications

Application Note

*Optimal dilutions/concentrations should be determined by the researcher.

Suggested dilution	Recommended dilution
WB	1:1000-1:10000
ICC/IF	1:100-1:1000
IHC-P	1:100-1:1000
IHC-Fr	1:100-1:1000

Not tested in other applications.

Calculated MW 65 kDa. ([Note](#))

Product Note This antibody is specific for GAD65 protein, and it does not cross-react with GAD67 protein.

Properties

Form	Liquid
Buffer	PBS, 20% Glycerol
Preservative	0.01% Thimerosal
Storage	Store as concentrated solution. Centrifuge briefly prior to opening vial. For short-term storage (1-2 weeks), store at 4°C. For long-term storage, aliquot and store at -20°C or below. Avoid multiple freeze-thaw cycles.
Concentration	1 mg/ml (Please refer to the vial label for the specific concentration.)
Immunogen	Carrier-protein conjugated synthetic peptide encompassing a sequence within the C-terminus region of human GAD65. The exact sequence is proprietary.
Purification	Purified by antigen-affinity chromatography.
Conjugation	Unconjugated

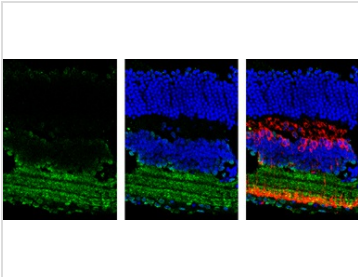


For full product information, images and publications, please visit our [website](#).

For laboratory research use only. Not for any clinical, therapeutic, or diagnostic use in humans or animals. Not for animal or human consumption.

Note

Purchasers shall not, and agree not to enable third parties to, analyze, copy, reverse engineer or otherwise attempt to determine the structure or sequence of the product.

DATA IMAGES

GTx100281 IHC-Fr Image

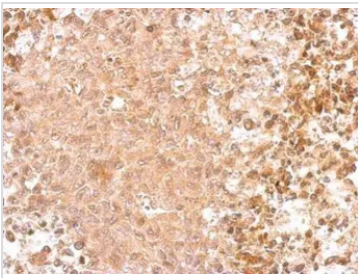
GAD65 antibody [C2C3], C-term detects GAD65 protein by immunohistochemical analysis.

Sample: Frozen sectioned adult mouse retina.

Green: GAD65 protein stained by GAD65 antibody [C2C3], C-term (GTx100281) diluted at 1:250.

Red: Protein kinase C alpha staining.

Blue: Fluoroshield with DAPI (GTx30920).

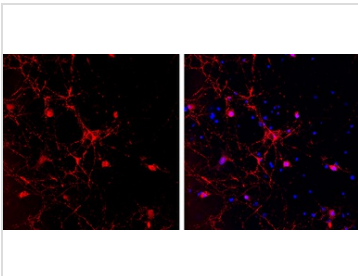

GTx100281 IHC-P Image

GAD65 antibody [C2C3], C-term detects GAD2 protein at cytosol on RT2 xenograft by immunohistochemical analysis.

Sample: Paraffin-embedded RT2 xenograft.

GAD65 antibody [C2C3], C-term (GTx100281) dilution: 1:500.

Antigen Retrieval: Trilogy™ (EDTA based, pH 8.0) buffer, 15min

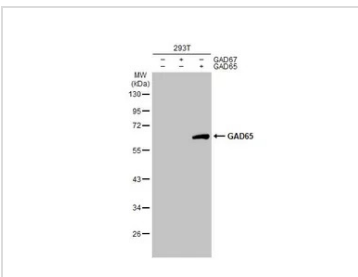

GTx100281 ICC/IF Image

GAD65 antibody [C2C3], C-term detects GAD65 protein expression by immunofluorescent analysis.

Sample: Cultured Rat E18 primary cortical neuron, DIV 8. Cells were fixed in 4% paraformaldehyde at RT for 15 min.

Red: GAD65 protein stained by GAD65 antibody [C2C3], C-term (GTx100281) diluted at 1:250.

Blue: Fluoroshield with DAPI (GTx30920)..


GTx100281 WB Image

Non-transfected (–) and transfected (+) 293T whole cell extracts (30 µg) were separated by 10% SDS-PAGE, and the membrane was blotted with GAD65 antibody [C2C3], C-term (GTx100281) diluted at 1:100000. The HRP-conjugated anti-rabbit IgG antibody (GTx213110-01) was used to detect the primary antibody.



For full product information, images and publications, please visit our [website](https://www.genetex.com).