

CSN1 antibody [C3], C-term

Cat. No. GTX100291

Host	Rabbit
Clonality	Polyclonal
Isotype	IgG
Applications	WB, ICC/IF, IHC-P
Reactivity	Human, Mouse, Rat

Package
100 µl, 25 µl

Applications

Application Note

*Optimal dilutions/concentrations should be determined by the researcher.

Suggested dilution	Recommended dilution
WB	1:500-1:3000
ICC/IF	1:100-1:1000
IHC-P	1:100-1:1000

Not tested in other applications.

Calculated MW 56 kDa. ([Note](#))

Properties

Form	Liquid
Buffer	PBS, 20% Glycerol
Preservative	0.01% Thimerosal
Storage	Store as concentrated solution. Centrifuge briefly prior to opening vial. For short-term storage (1-2 weeks), store at 4°C. For long-term storage, aliquot and store at -20°C or below. Avoid multiple freeze-thaw cycles.
Concentration	1 mg/ml (Please refer to the vial label for the specific concentration.)
Immunogen	Carrier-protein conjugated synthetic peptide encompassing a sequence within the C-terminus region of human CSN1. The exact sequence is proprietary.
Purification	Purified by antigen-affinity chromatography.
Conjugation	Unconjugated

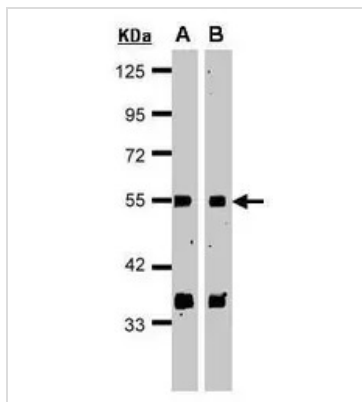
Note

For laboratory research use only. Not for any clinical, therapeutic, or diagnostic use in humans or animals. Not for animal or human consumption.

Purchasers shall not, and agree not to enable third parties to, analyze, copy, reverse engineer or otherwise attempt to determine the structure or sequence of the product.



For full product information, images and publications, please visit our [website](#).

DATA IMAGES

GTX100291 WB Image

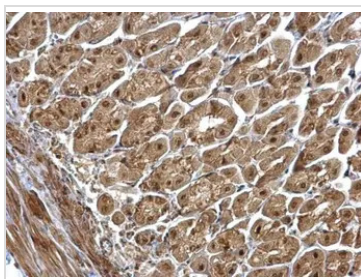
Sample(30 µg of whole cell lysate)

A:HeLa S3 (GTX14654)

B:MOLT4 (GTX27912)

15% SDS PAGE

GTX100291 diluted at 1:1000

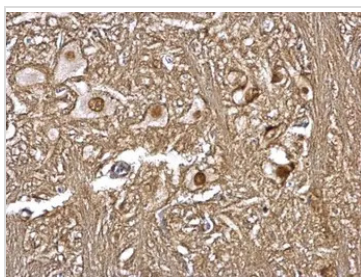

GTX100291 IHC-P Image

CSN1 antibody [C3], C-term detects CSN1 protein at nucleus on mouse stomach by immunohistochemical analysis.

Sample: Paraffin-embedded mouse stomach.

CSN1 antibody [C3], C-term (GTX100291) dilution: 1:500.

Antigen Retrieval: Trilogy™ (EDTA based, pH 8.0) buffer, 15min

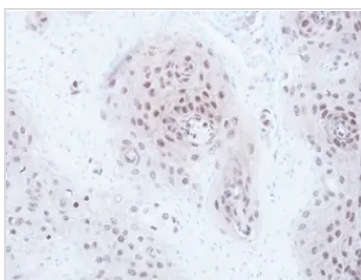

GTX100291 IHC-P Image

CSN1 antibody [C3], C-term detects CSN1 protein at nucleus on rat brain stem by immunohistochemical analysis.

Sample: Paraffin-embedded rat brain stem.

CSN1 antibody [C3], C-term (GTX100291) dilution: 1:500.

Antigen Retrieval: Trilogy™ (EDTA based, pH 8.0) buffer, 15min


GTX100291 IHC-P Image

Immunohistochemical analysis of paraffin-embedded A549 xenograft, using CSN1(GTX100291) antibody at 1:100 dilution.

Antigen Retrieval: Trilogy™ (EDTA based, pH 8.0) buffer, 15min



For full product information, images and publications, please visit our [website](http://www.genetex.com).