

## beta Actin antibody

Cat. No. GTX100313

Host	Rabbit
Clonality	Polyclonal
Isotype	IgG
Applications	WB, ICC/IF, IHC-P
Reactivity	Human, Mouse, Drosophila, Cat, Dog

References ( 9 )

Package

100 µl, 25 µl

## Applications

## Application Note

\*Optimal dilutions/concentrations should be determined by the researcher.

Suggested dilution	Recommended dilution
WB	1:500-1:3000
ICC/IF	1:100-1:1000
IHC-P	1:100-1:1000

Not tested in other applications.

Calculated MW 42 kDa. ( [Note](#) )

## Properties

Form	Liquid
Buffer	PBS, 20% Glycerol
Preservative	0.025% ProClin 300
Storage	Store as concentrated solution. Centrifuge briefly prior to opening vial. For short-term storage (1-2 weeks), store at 4°C. For long-term storage, aliquot and store at -20°C or below. Avoid multiple freeze-thaw cycles.
Concentration	1.16 mg/ml (Please refer to the vial label for the specific concentration.)
Immunogen	Carrier-protein conjugated synthetic peptide encompassing a sequence within the N-terminus region of human beta Actin. The exact sequence is proprietary.
Purification	Purified by antigen-affinity chromatography.
Conjugation	Unconjugated

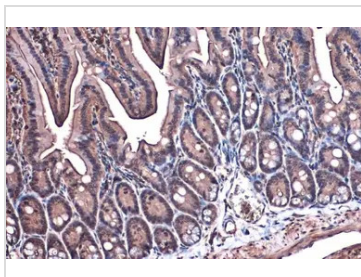
## Note

For laboratory research use only. Not for any clinical, therapeutic, or diagnostic use in humans or animals. Not for animal or human consumption.

Purchasers shall not, and agree not to enable third parties to, analyze, copy, reverse engineer or otherwise attempt to determine the structure or sequence of the product.



For full product information, images and publications, please visit our [website](#).

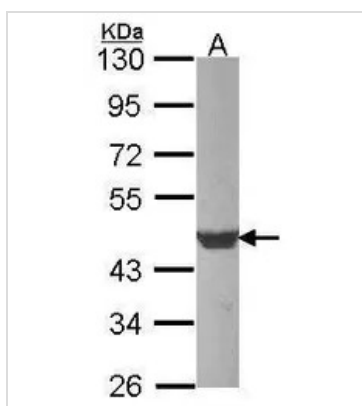
**DATA IMAGES**

**GTx100313 IHC-P Image**

beta Actin antibody detects beta Actin protein at cell membrane and cytoplasm by immunohistochemical analysis.

Sample: Paraffin-embedded mouse intestine.

beta Actin stained by beta Actin antibody (GTx100313) diluted at 1:500.

Antigen Retrieval: Citrate buffer, pH 6.0, 15 min


**GTx100313 WB Image**

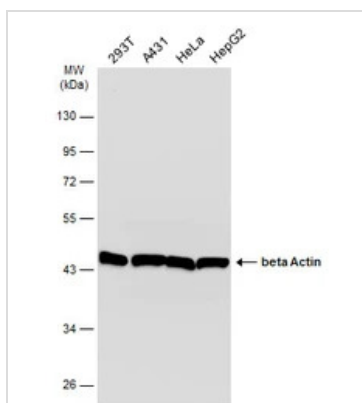
Sample (30 ug of whole cell lysate)

A: Raji

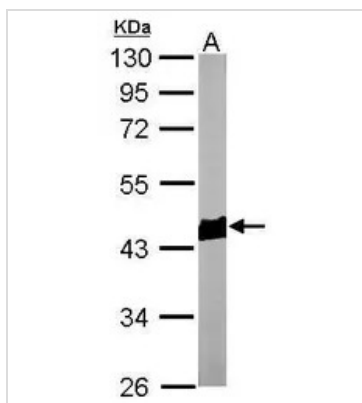
10% SDS PAGE

Beta-actin antibody

GTx100313 diluted at 1:1000


**GTx100313 WB Image**

Various whole cell extracts (30  $\mu$ g) were separated by 10% SDS-PAGE, and the membrane was blotted with beta Actin antibody (GTx100313) diluted at 1:1000. The HRP-conjugated anti-rabbit IgG antibody (GTx213110-01) was used to detect the primary antibody.


**GTx100313 WB Image**

Sample (30 ug of whole cell lysate)

A: NIH-3T3

10% SDS PAGE

GTx100313 diluted at 1:5000



For full product information, images and publications, please visit our [website](http://www.genetex.com).