

## beta Actin antibody

Cat. No. GTX100315

Host	Rabbit
Clonality	Polyclonal
Isotype	IgG
Application	WB, ICC/IF, IHC-P
Reactivity	Human, Mouse, Rat

Reference ( 1 )

Package

100 µl, 25 µl

## APPLICATION

## Application Note

\*Optimal dilutions/concentrations should be determined by the researcher.

Suggested dilution	Recommended dilution
WB	1:500-1:3000
ICC/IF	1:100-1:1000
IHC-P	1:100-1:1000

Not tested in other applications.

Calculated MW 42 kDa. ( [Note](#) )

## PROPERTIES

Form	Liquid
Buffer	0.1M Tris, 0.1M Glycine, 10% Glycerol
Preservative	0.01% Thimerosal
Storage	Store as concentrated solution. Centrifuge briefly prior to opening vial. For short-term storage (1-2 weeks), store at 4°C. For long-term storage, aliquot and store at -20°C or below. Avoid multiple freeze-thaw cycles.
Concentration	1 mg/ml (Please refer to the vial label for the specific concentration.)
Immunogen	Carrier-protein conjugated synthetic peptide encompassing a sequence within the C-terminus region of human beta Actin. The exact sequence is proprietary.
Purification	Purified by antigen-affinity chromatography.
Conjugation	Unconjugated

## Note

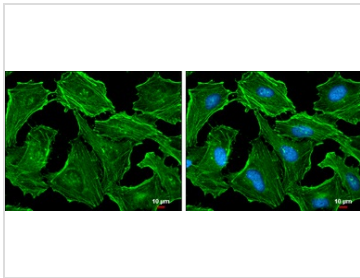
For laboratory research use only. Not for any clinical, therapeutic, or diagnostic use in humans or animals. Not for animal or human consumption.

Purchasers shall not, and agree not to enable third parties to, analyze, copy, reverse engineer or otherwise attempt to determine the structure or sequence of the product.



For full product information, images and publications, please visit our [website](#).

## DATA IMAGES



### GTX100315 ICC/IF Image

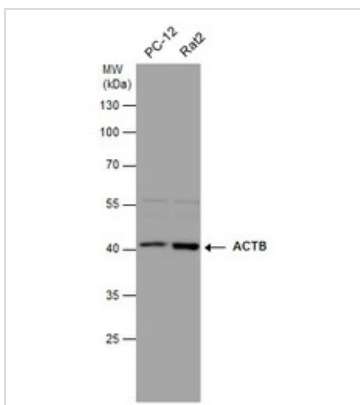
beta Actin antibody detects beta Actin protein at cytoskeleton by immunofluorescent analysis.

Sample: HeLa cells were fixed in ice-cold MeOH for 5 min.

Green: beta Actin protein stained by beta Actin antibody (GTX100315) diluted at 1:500.

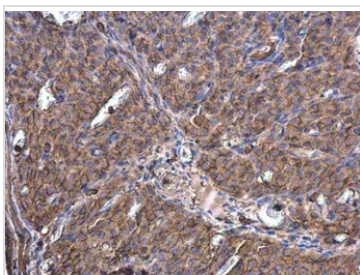
Blue: Hoechst 33342 staining.

Scale bar = 10  $\mu$ m.



### GTX100315 WB Image

beta Actin antibody detects beta Actin protein by western blot analysis. Various whole cell extracts (30  $\mu$ g) were separated by 10% SDS-PAGE, and the membrane was blotted with beta Actin antibody (GTX100315) diluted at 1:1000.



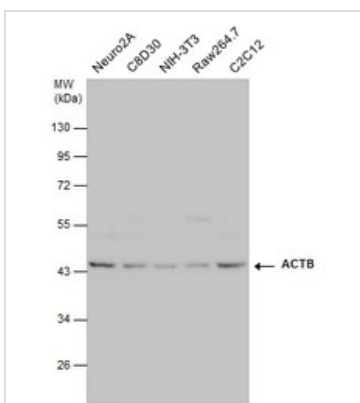
### GTX100315 IHC-P Image

beta Actin antibody detects beta Actin protein at cytoplasm in rat ovary by immunohistochemical analysis.

Sample: Paraffin-embedded rat ovary.

beta Actin antibody (GTX100315) diluted at 1:500.

Antigen Retrieval: Citrate buffer, pH 6.0, 15 min



### GTX100315 WB Image

beta Actin antibody detects beta Actin protein by western blot analysis. Various whole cell extracts (30  $\mu$ g) were separated by 10% SDS-PAGE, and the membrane was blotted with beta Actin antibody (GTX100315) diluted at 1:1000.



For full product information, images and publications, please visit our [website](https://www.genetex.com).