

## ADAMTS5 antibody

Cat. No. GTX100332

<b>Host</b>	Rabbit
<b>Clonality</b>	Polyclonal
<b>Isotype</b>	IgG
<b>Applications</b>	WB, IHC-P
<b>Reactivity</b>	Human, Mouse

References ( 11 )

Package

100 µl, 25 µl

## Applications

## Application Note

\*Optimal dilutions/concentrations should be determined by the researcher.

Suggested dilution	Recommended dilution
WB	1:500-1:3000
IHC-P	1:100-1:1000

Not tested in other applications.

Calculated MW 102 kDa. ( [Note](#) )

## Properties

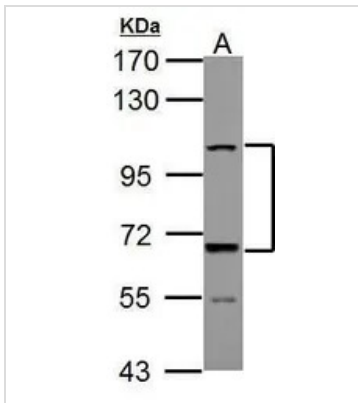
<b>Form</b>	Liquid
<b>Buffer</b>	PBS, 20% Glycerol
<b>Preservative</b>	0.01% Thimerosal
<b>Storage</b>	Store as concentrated solution. Centrifuge briefly prior to opening vial. For short-term storage (1-2 weeks), store at 4°C. For long-term storage, aliquot and store at -20°C or below. Avoid multiple freeze-thaw cycles.
<b>Concentration</b>	1 mg/ml (Please refer to the vial label for the specific concentration.)
<b>Immunogen</b>	Carrier-protein conjugated synthetic peptide encompassing a sequence within the C-terminus region of human ADAMTS5. The exact sequence is proprietary.
<b>Purification</b>	Purified by antigen-affinity chromatography.
<b>Conjugation</b>	Unconjugated

## Note

For laboratory research use only. Not for any clinical, therapeutic, or diagnostic use in humans or animals. Not for animal or human consumption.

Purchasers shall not, and agree not to enable third parties to, analyze, copy, reverse engineer or otherwise attempt to determine the structure or sequence of the product.

For full product information, images and publications, please visit our [website](#).

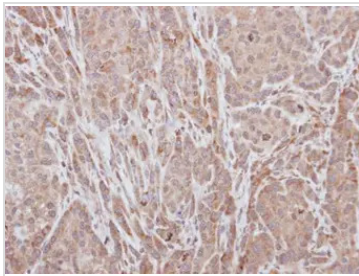
**DATA IMAGES**

**GTX100332 WB Image**

Sample (30 ug of whole cell lysate)

A: JC

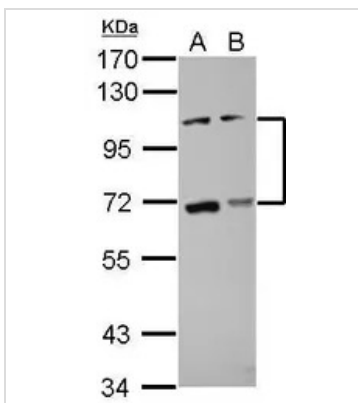
7.5% SDS PAGE

GTX100332 diluted at 1:1000


**GTX100332 IHC-P Image**

Immunohistochemical analysis of paraffin-embedded A549 xenograft, using ADAMTS5(GTX100332) antibody at 1:100 dilution.

Antigen Retrieval: Trilogy™ (EDTA based, pH 8.0) buffer, 15min


**GTX100332 WB Image**

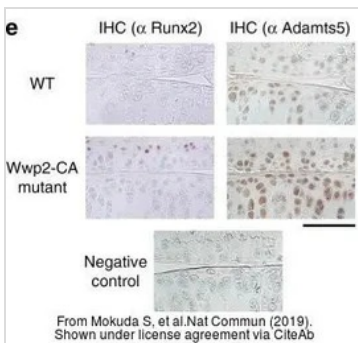
Sample (30 ug of whole cell lysate)

A: HCT116

B: MCF-7

7.5% SDS PAGE

GTX100332 diluted at 1:1000


**GTX100332 IHC-P Image**

The data was published in the journal Nat Commun in 2019. [PMID: 31160553](https://pubmed.ncbi.nlm.nih.gov/31160553/)



For full product information, images and publications, please visit our [website](https://www.genetex.com).