

Dopamine Receptor D1 antibody [C2C3], C-term

Cat. No. GTX100354

| | |
|---------------------|---------------------------|
| Host | Rabbit |
| Clonality | Polyclonal |
| Isotype | IgG |
| Applications | WB, ICC/IF, IHC-P, IHC-Fr |
| Reactivity | Human, Mouse, Rat |

References (3)

★★★★☆ Review (2)

Package

100 µl, 25 µl

Applications

Application Note

*Optimal dilutions/concentrations should be determined by the researcher.

| Suggested dilution | Recommended dilution |
|--------------------|----------------------|
| WB | 1:500-1:3000 |
| ICC/IF | 1:100-1:1000 |
| IHC-P | 1:100-1:1000 |
| IHC-Fr | 1:100-1:1000 |

Not tested in other applications.

Calculated MW 49 kDa. ([Note](#))

Properties

| | |
|----------------------|--|
| Form | Liquid |
| Buffer | PBS, 40% Glycerol |
| Preservative | 0.01% Thimerosal |
| Storage | Store as concentrated solution. Centrifuge briefly prior to opening vial. For short-term storage (1-2 weeks), store at 4°C. For long-term storage, aliquot and store at -20°C or below. Avoid multiple freeze-thaw cycles. |
| Concentration | 2 mg/ml (Please refer to the vial label for the specific concentration.) |
| Immunogen | Synthetic peptide encompassing a sequence within the Intracellular domain of human Dopamine Receptor D1. The exact sequence is proprietary. |
| Purification | Affinity purified by Protein A. |
| Conjugation | Unconjugated |

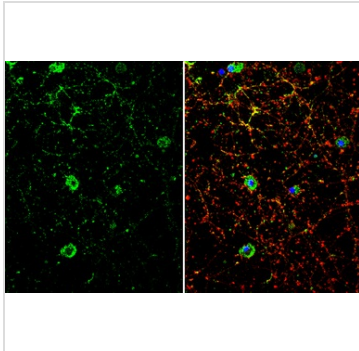


For full product information, images and publications, please visit our [website](#).

For laboratory research use only. Not for any clinical, therapeutic, or diagnostic use in humans or animals. Not for animal or human consumption.

Note

Purchasers shall not, and agree not to enable third parties to, analyze, copy, reverse engineer or otherwise attempt to determine the structure or sequence of the product.

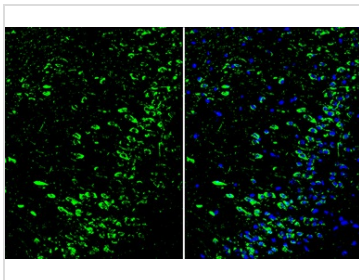
DATA IMAGES

GTX100354 ICC/IF Image

Dopamine Receptor D1 antibody [C2C3], C-term detects Dopamine Receptor D1 protein by immunofluorescent analysis.

Sample: DIV10 rat E18 primary cortical neuron cells were fixed in 4% paraformaldehyde at RT for 15 min.
Green: Dopamine Receptor D1 stained by Dopamine Receptor D1 antibody [C2C3], C-term (GTX100354) diluted at 1:500.

Red: beta Tubulin 3/ Tuj1, stained by beta Tubulin 3/ Tuj1 antibody [GT11710] (GTX631836) diluted at 1:500.

Blue: Fluoroshield with DAPI (GTX30920).

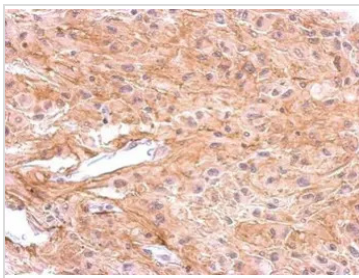

GTX100354 IHC-Fr Image

Dopamine Receptor D1 antibody [C2C3], C-term detects Dopamine Receptor D1 protein by immunohistochemical analysis.

Sample: Frozen-sectioned mouse cerebral cortex.

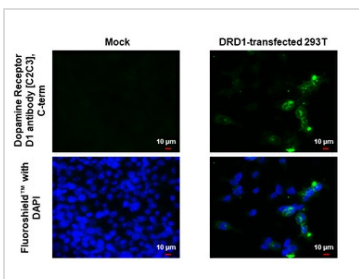
Green: Dopamine Receptor D1 stained by Dopamine Receptor D1 antibody [C2C3], C-term (GTX100354) diluted at 1:250.

Blue: Fluoroshield with DAPI (GTX30920).


GTX100354 IHC-P Image

Immunohistochemical analysis of paraffin-embedded U373 xenograft, using Dopamine Receptor D1(GTX100354) antibody at 1:500 dilution.

Antigen Retrieval: Trilogy™ (EDTA based, pH 8.0) buffer, 15min


GTX100354 ICC/IF Image

Dopamine Receptor D1 antibody [C2C3], C-term detects Dopamine Receptor D1 protein by immunofluorescent analysis.

Sample: Mock and transfected 293T cells were fixed in ice-cold MeOH for 5 min.

Green: Dopamine Receptor D1 stained by Dopamine Receptor D1 antibody [C2C3], C-term (GTX100354) diluted at 1:500.

Blue: Fluoroshield with DAPI (GTX30920).



For full product information, images and publications, please visit our [website](https://www.genetex.com).