

DNA polymerase gamma antibody

Cat. No. GTX100398

Host	Rabbit
Clonality	Polyclonal
Isotype	IgG
Applications	WB, ICC/IF, IHC-P, IP
Reactivity	Human, Rat

Package
100 µl, 25 µl

Applications

Application Note

*Optimal dilutions/concentrations should be determined by the researcher.

Suggested dilution	Recommended dilution
WB	1:500-1:3000
ICC/IF	1:100-1:1000
IHC-P	1:100-1:1000
IP	1:100-1:500

Not tested in other applications.

Calculated MW 140 kDa. ([Note](#))

Properties

Form	Liquid
Buffer	PBS, 20% Glycerol
Preservative	0.025% ProClin 300
Storage	Store as concentrated solution. Centrifuge briefly prior to opening vial. For short-term storage (1-2 weeks), store at 4°C. For long-term storage, aliquot and store at -20°C or below. Avoid multiple freeze-thaw cycles.
Concentration	0.67 mg/ml (Please refer to the vial label for the specific concentration.)
Immunogen	Recombinant protein encompassing a sequence within the C-terminus region of human DNA polymerase gamma. The exact sequence is proprietary.
Purification	Purified by antigen-affinity chromatography.
Conjugation	Unconjugated



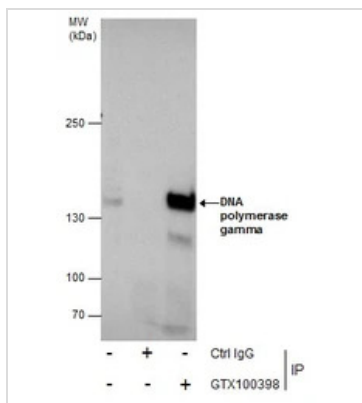
For full product information, images and publications, please visit our [website](#).

For laboratory research use only. Not for any clinical, therapeutic, or diagnostic use in humans or animals. Not for animal or human consumption.

Note

Purchasers shall not, and agree not to enable third parties to, analyze, copy, reverse engineer or otherwise attempt to determine the structure or sequence of the product.

DATA IMAGES

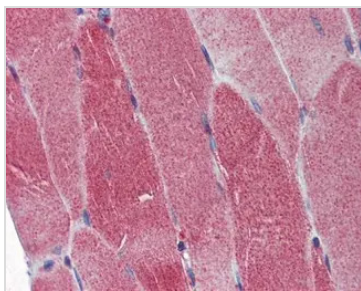


GTX100398 IP Image

Immunoprecipitation of DNA polymerase gamma protein from MCF-7 whole cell extracts using 5 µg of DNA polymerase gamma antibody (GTX100398).

Western blot analysis was performed using DNA polymerase gamma antibody (GTX100398).

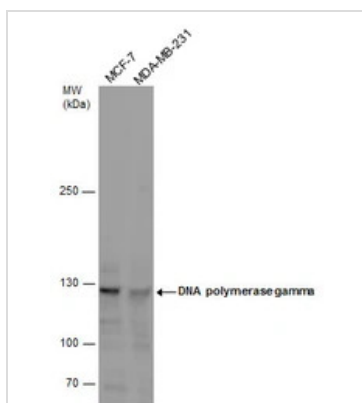
EasyBlot anti-Rabbit IgG (GTX221666-01) was used as a secondary reagent.



GTX100398 IHC-P Image

Immunohistochemical analysis of paraffin-embedded human skeletal muscle, using DNA polymerase gamma (GTX100398) antibody (10 µg/ml).

Antigen Retrieval: Trilogy™ (EDTA based, pH 8.0) buffer, 15min



GTX100398 WB Image

DNA polymerase gamma antibody detects DNA polymerase gamma protein by Western blot analysis.

Various whole cell extracts (30 µg) were separated by 5% SDS-PAGE, and the membrane was blotted with DNA polymerase gamma antibody (GTX100398) diluted by 1:1000.



For full product information, images and publications, please visit our [website](#).