

## UBE2B antibody

**Cat. No. GTX100416**

<b>Host</b>	Rabbit
<b>Clonality</b>	Polyclonal
<b>Isotype</b>	IgG
<b>Applications</b>	WB, ICC/IF
<b>Reactivity</b>	Human, Mouse

References ( 3 )

Package

100 µl, 25 µl

## Applications

**Application Note**

\*Optimal dilutions/concentrations should be determined by the researcher.

Suggested dilution	Recommended dilution
WB	1:500-1:10000
ICC/IF	1:100-1:1000

Not tested in other applications.

**Calculated MW** 17 kDa. ( [Note](#) )

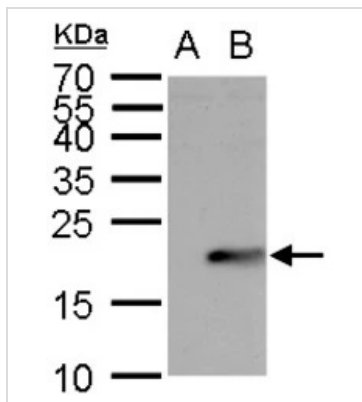
## Properties

<b>Form</b>	Liquid
<b>Buffer</b>	PBS, 1% BSA, 20% Glycerol
<b>Preservative</b>	0.01% Thimerosal
<b>Storage</b>	Store as concentrated solution. Centrifuge briefly prior to opening vial. For short-term storage (1-2 weeks), store at 4°C. For long-term storage, aliquot and store at -20°C or below. Avoid multiple freeze-thaw cycles.
<b>Concentration</b>	2.72 mg/ml (Please refer to the vial label for the specific concentration.)
<b>Immunogen</b>	Recombinant protein encompassing a sequence within the center region of human UBE2B. The exact sequence is proprietary.
<b>Purification</b>	Purified by antigen-affinity chromatography.
<b>Conjugation</b>	Unconjugated
<b>Note</b>	For laboratory research use only. Not for any clinical, therapeutic, or diagnostic use in humans or animals. Not for animal or human consumption.  Purchasers shall not, and agree not to enable third parties to, analyze, copy, reverse engineer or otherwise attempt to determine the structure or sequence of the product.



For full product information, images and publications, please visit our [website](#).

DATA IMAGES



**GTX100416 WB Image**

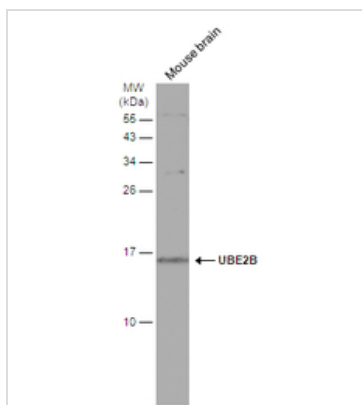
UBE2B antibody detects UBE2B protein by Western blot analysis.

A. 30 µg 293T whole cell lysate/extract

B. 30 µg whole cell lysate/extract of 3xFlag-human UBE2B-transfected 293T cells

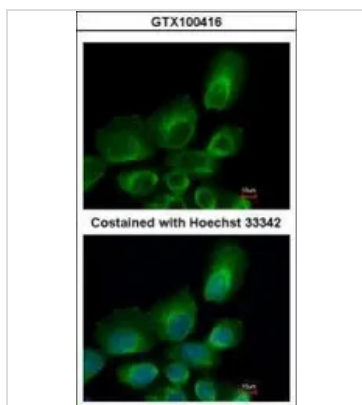
12 % SDS-PAGE

UBE2B antibody (GTX100416) dilution: 1:5000



**GTX100416 WB Image**

Mouse tissue extract (50 µg) was separated by 15% SDS-PAGE, and the membrane was blotted with UBE2B antibody (GTX100416) diluted at 1:1000. The HRP-conjugated anti-rabbit IgG antibody (GTX213110-01) was used to detect the primary antibody.



**GTX100416 ICC/IF Image**

Immunofluorescence analysis of paraformaldehyde-fixed A431, using UBE2B(GTX100416) antibody at 1:500 dilution.



For full product information, images and publications, please visit our [website](#).