

UBE2A antibody

Cat. No. GTX100426

| | |
|---------------------|------------|
| Host | Rabbit |
| Clonality | Polyclonal |
| Isotype | IgG |
| Applications | WB, ICC/IF |
| Reactivity | Human |

Package
100 µl, 25 µl

Applications

Application Note

*Optimal dilutions/concentrations should be determined by the researcher.

| Suggested dilution | Recommended dilution |
|--------------------|----------------------|
| WB | 1:500-1:3000 |
| ICC/IF | 1:100-1:1000 |

Not tested in other applications.

Calculated MW 17 kDa. ([Note](#))

Product Note Specificity: Based on sequence homology, this antibody may cross react with UBE2B protein.

Properties

| | |
|----------------------|--|
| Form | Liquid |
| Buffer | PBS, 20% Glycerol |
| Preservative | 0.01% Thimerosal |
| Storage | Store as concentrated solution. Centrifuge briefly prior to opening vial. For short-term storage (1-2 weeks), store at 4°C. For long-term storage, aliquot and store at -20°C or below. Avoid multiple freeze-thaw cycles. |
| Concentration | 0.93 mg/ml (Please refer to the vial label for the specific concentration.) |
| Immunogen | Full length human UBE2A Recombinant protein. |
| Purification | Purified by antigen-affinity chromatography. |
| Conjugation | Unconjugated |

Note

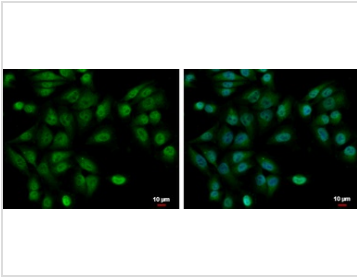
For laboratory research use only. Not for any clinical, therapeutic, or diagnostic use in humans or animals. Not for animal or human consumption.

Purchasers shall not, and agree not to enable third parties to, analyze, copy, reverse engineer or otherwise attempt to determine the structure or sequence of the product.



For full product information, images and publications, please visit our [website](#).

DATA IMAGES



GTX100426 ICC/IF Image

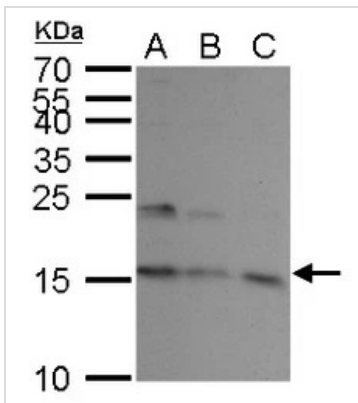
UBE2A antibody detects UBE2A protein at cytoplasm and nucleus by immunofluorescent analysis.

Sample: A375 cells were fixed in 4% paraformaldehyde at RT for 15 min.

Green: UBE2A protein stained by UBE2A antibody (GTX100426) diluted at 1:500.

Blue: Hoechst 33342 staining.

Scale bar = 10 μ m.



GTX100426 WB Image

UBE2A antibody detects UBE2A protein by Western blot analysis.

A. 30 μ g K562 whole cell lysate/extract

B. 30 μ g THP-1 whole cell lysate/extract

C. 30 μ g HL-60 whole cell lysate/extract

15 % SDS-PAGE

UBE2A antibody (GTX100426) dilution: 1:1000



For full product information, images and publications, please visit our [website](https://www.genetex.com).