

ABCG2 antibody

Cat. No. GTX100436

Host	Rabbit
Clonality	Polyclonal
Isotype	IgG
Applications	IHC-P
Reactivity	Human

References (1)

Package

100 µl, 25 µl

Applications

Application Note

*Optimal dilutions/concentrations should be determined by the researcher.

Suggested dilution	Recommended dilution
IHC-P	1:100-1:1000

Not tested in other applications.

Properties

Form	Liquid
Buffer	PBS, 20% Glycerol
Preservative	0.01% Thimerosal
Storage	Store as concentrated solution. Centrifuge briefly prior to opening vial. For short-term storage (1-2 weeks), store at 4°C. For long-term storage, aliquot and store at -20°C or below. Avoid multiple freeze-thaw cycles.
Concentration	1 mg/ml (Please refer to the vial label for the specific concentration.)
Immunogen	Recombinant protein encompassing a sequence within the Intracellular domain of human ABCG2. The exact sequence is proprietary.
Purification	Purified by antigen-affinity chromatography.
Conjugation	Unconjugated

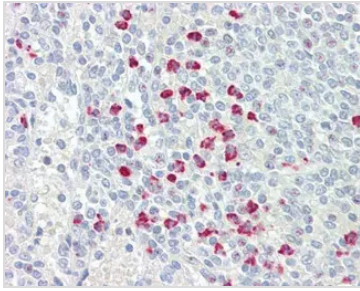
Note

For laboratory research use only. Not for any clinical, therapeutic, or diagnostic use in humans or animals. Not for animal or human consumption.

Purchasers shall not, and agree not to enable third parties to, analyze, copy, reverse engineer or otherwise attempt to determine the structure or sequence of the product.



For full product information, images and publications, please visit our [website](#).

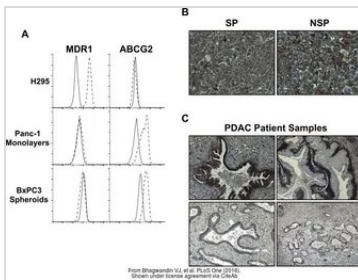
DATA IMAGES

GTX100436 IHC-P Image

ABCG2 antibody detects ABCG2 protein at membrane on human spleen by immunohistochemical analysis.

Sample: Paraffin-embedded spleen.

ABCG2 antibody (GTX100436) dilution: 1:100.

Antigen Retrieval: Citrate buffer, pH 6.0, 15 min


GTX100436 IHC-P Image

The data was published in the journal PLoS One in 2016. [PMID: 26859746](https://doi.org/10.1371/journal.pone.0268597)



For full product information, images and publications, please visit our [website](https://www.genetex.com).