

ABCG2 antibody

Cat. No. GTX100437

Host	Rabbit
Clonality	Polyclonal
Isotype	IgG
Applications	WB, IHC-P
Reactivity	Human, Mouse

References (13)

Package

100 µl, 25 µl

Applications

Application Note

*Optimal dilutions/concentrations should be determined by the researcher.

Suggested dilution	Recommended dilution
WB	1:500-1:3000
IHC-P	1:100-1:1000

Not tested in other applications.

Calculated MW 72 kDa. ([Note](#))

Properties

Form	Liquid
Buffer	PBS, 20% Glycerol
Preservative	0.01% Thimerosal
Storage	Store as concentrated solution. Centrifuge briefly prior to opening vial. For short-term storage (1-2 weeks), store at 4°C. For long-term storage, aliquot and store at -20°C or below. Avoid multiple freeze-thaw cycles.
Concentration	1 mg/ml (Please refer to the vial label for the specific concentration.)
Immunogen	Recombinant protein encompassing a sequence within the Intracellular domain of human ABCG2. The exact sequence is proprietary.
Purification	Purified by antigen-affinity chromatography.
Conjugation	Unconjugated

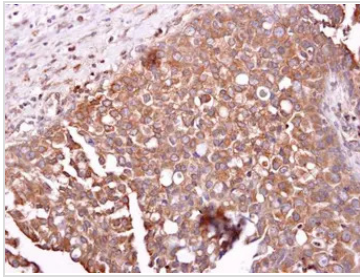
Note

For laboratory research use only. Not for any clinical, therapeutic, or diagnostic use in humans or animals. Not for animal or human consumption.

Purchasers shall not, and agree not to enable third parties to, analyze, copy, reverse engineer or otherwise attempt to determine the structure or sequence of the product.

For full product information, images and publications, please visit our [website](#).

DATA IMAGES

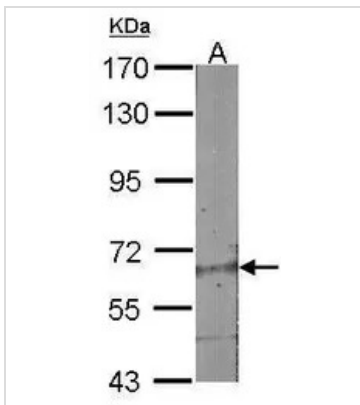


GTX100437 IHC-P Image

ABCG2 antibody detects ABCG2 protein at cytosol on human breast carcinoma by immunohistochemical analysis.

Sample: ABCG2 antibody (GTX100437) dilution: 1:250.

Antigen Retrieval: Trilogy™ (EDTA based, pH 8.0) buffer, 15min



GTX100437 WB Image

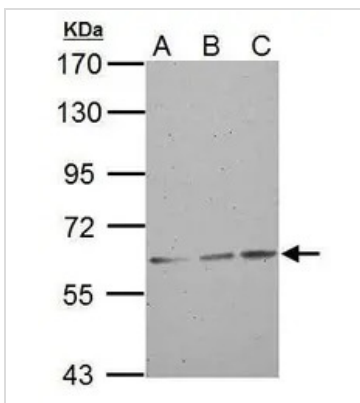
Sample (30 µg of whole cell lysate)

A:NIH-3T3

7.5% SDS PAGE

GTX100437 diluted at 1:1000

The HRP-conjugated anti-rabbit IgG antibody (GTX213110-01) was used to detect the primary antibody.



GTX100437 WB Image

ABCG2 antibody detects ABCG2 protein by western blot analysis.

A. 30 µg A549 whole cell lysate/extract

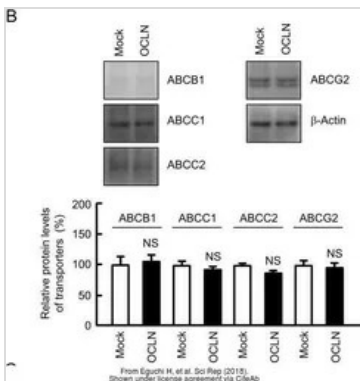
B. 30 µg H1299 whole cell lysate/extract

C. 30 µg HCT116 whole cell lysate/extract

7.5% SDS-PAGE

ABCG2 antibody (GTX100437) dilution: 1:1000

The HRP-conjugated anti-rabbit IgG antibody (GTX213110-01) was used to detect the primary antibody.



GTX100437 WB Image

The data was published in the journal Sci Rep in 2018. [PMID: 30310131](https://pubmed.ncbi.nlm.nih.gov/30310131/)



For full product information, images and publications, please visit our [website](https://www.genetex.com).