

## ABCG2 antibody

**Cat. No. GTX100437**

<b>Host</b>	Rabbit
<b>Clonality</b>	Polyclonal
<b>Isotype</b>	IgG
<b>Applications</b>	WB, IHC-P
<b>Reactivity</b>	Human, Mouse

References ( 12 )

Package

100 µl, 25 µl

## Applications

**Application Note**

\*Optimal dilutions/concentrations should be determined by the researcher.

Suggested dilution	Recommended dilution
WB	1:500-1:3000
IHC-P	1:100-1:1000

Not tested in other applications.

**Calculated MW** 72 kDa. ( [Note](#) )

## Properties

<b>Form</b>	Liquid
<b>Buffer</b>	PBS, 20% Glycerol
<b>Preservative</b>	0.01% Thimerosal
<b>Storage</b>	Store as concentrated solution. Centrifuge briefly prior to opening vial. For short-term storage (1-2 weeks), store at 4°C. For long-term storage, aliquot and store at -20°C or below. Avoid multiple freeze-thaw cycles.
<b>Concentration</b>	1 mg/ml (Please refer to the vial label for the specific concentration.)
<b>Immunogen</b>	Recombinant protein encompassing a sequence within the Intracellular domain of human ABCG2. The exact sequence is proprietary.
<b>Purification</b>	Purified by antigen-affinity chromatography.
<b>Conjugation</b>	Unconjugated

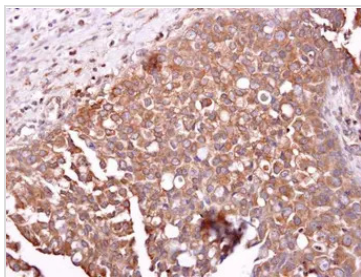
**Note**

For laboratory research use only. Not for any clinical, therapeutic, or diagnostic use in humans or animals. Not for animal or human consumption.

Purchasers shall not, and agree not to enable third parties to, analyze, copy, reverse engineer or otherwise attempt to determine the structure or sequence of the product.

For full product information, images and publications, please visit our [website](#).

DATA IMAGES

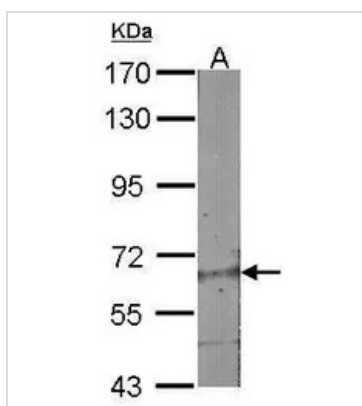


**GTX100437 IHC-P Image**

ABCG2 antibody detects ABCG2 protein at cytosol on human breast carcinoma by immunohistochemical analysis.

Sample: ABCG2 antibody (GTX100437) dilution: 1:250.

Antigen Retrieval: Trilogy™ (EDTA based, pH 8.0) buffer, 15min



**GTX100437 WB Image**

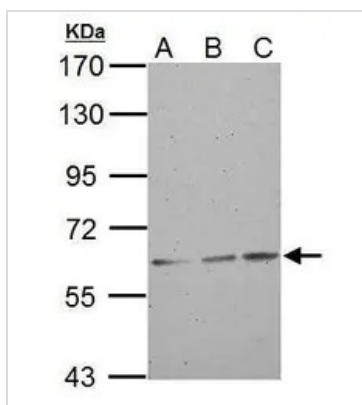
Sample (30 µg of whole cell lysate)

A:NIH-3T3

7.5% SDS PAGE

GTX100437 diluted at 1:1000

The HRP-conjugated anti-rabbit IgG antibody (GTX213110-01) was used to detect the primary antibody.



**GTX100437 WB Image**

ABCG2 antibody detects ABCG2 protein by western blot analysis.

A. 30 µg A549 whole cell lysate/extract

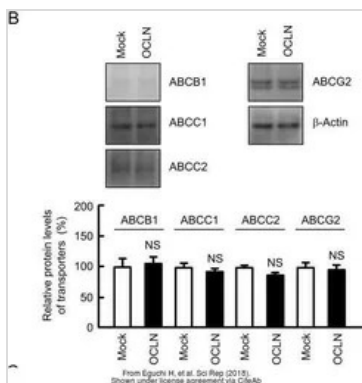
B. 30 µg H1299 whole cell lysate/extract

C. 30 µg HCT116 whole cell lysate/extract

7.5% SDS-PAGE

ABCG2 antibody (GTX100437) dilution: 1:1000

The HRP-conjugated anti-rabbit IgG antibody (GTX213110-01) was used to detect the primary antibody.



**GTX100437 WB Image**

The data was published in the journal Sci Rep in 2018. [PMID: 30310131](https://doi.org/10.1038/s41598-018-30310-1)



For full product information, images and publications, please visit our [website](https://www.genetex.com).