

## E-Cadherin antibody

Cat. No. GTX100443

<b>Host</b>	Rabbit
<b>Clonality</b>	Polyclonal
<b>Isotype</b>	IgG
<b>Applications</b>	WB, ICC/IF, IHC-P, IHC-Wm, IP, PLA
<b>Reactivity</b>	Human, Mouse, Rat, Zebrafish, Dog

References ( 127 )

★★★★★ Review ( 9 )

Package

100 µl, 25 µl

## PRODUCT

## Summary

E-Cadherin antibody detects E-cadherin protein, which is encoded by the CDH1 gene. E-cadherin is a calcium-dependent cell adhesion protein (predicted molecular weight of 97 kDa) that plays a vital role in cell migration and proliferation. Because E-cadherin is an epithelial cell marker, this antibody is a well-published and widely used reagent to study E-cadherin protein expression during the epithelial-mesenchymal transition (EMT) in various physiological and pathological processes.

## Applications

## Application Note

\*Optimal dilutions/concentrations should be determined by the researcher.

Suggested dilution	Recommended dilution
WB	1:500-1:10000
ICC/IF	1:100-1:1000
IHC-P	1:100-1:1000
IHC-Wm	Assay dependent
IP	1:100-1:500
PLA	Assay dependent

Not tested in other applications.

**Calculated MW** 97 kDa. ( [Note](#) )

## Properties

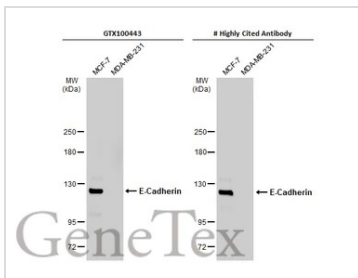
<b>Form</b>	Liquid
<b>Buffer</b>	PBS, 1% BSA, 20% Glycerol
<b>Preservative</b>	0.025% ProClin 300
<b>Storage</b>	Store as concentrated solution. Centrifuge briefly prior to opening vial. For short-term storage (1-2 weeks), store at 4°C. For long-term storage, aliquot and store at -20°C or below. Avoid multiple freeze-thaw cycles.
<b>Concentration</b>	0.14 mg/ml (Please refer to the vial label for the specific concentration.)



For full product information, images and publications, please visit our [website](#).

<b>Immunogen</b>	Recombinant protein encompassing a sequence within the center region of human E-Cadherin. The exact sequence is proprietary.
<b>Purification</b>	Purified by antigen-affinity chromatography.
<b>Conjugation</b>	Unconjugated
<b>Note</b>	For laboratory research use only. Not for any clinical, therapeutic, or diagnostic use in humans or animals. Not for animal or human consumption.  Purchasers shall not, and agree not to enable third parties to, analyze, copy, reverse engineer or otherwise attempt to determine the structure or sequence of the product.

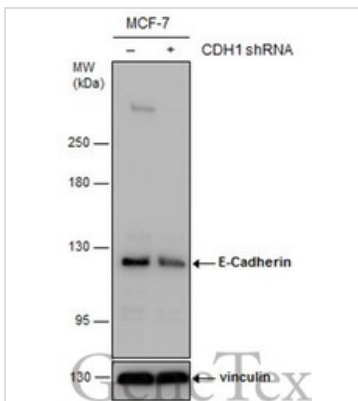
## DATA IMAGES



### GTx100443 WB Image

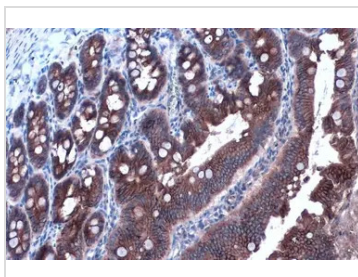
Various whole cell extracts (30 µg) were separated by 5% SDS-PAGE, and the membranes were blotted with E-Cadherin antibody (GTx100443) diluted at 1:3000 and competitor's antibody diluted at 1:3000. The HRP-conjugated anti-rabbit IgG antibody (GTx213110-01) was used to detect the primary antibody.

\*The competitor is not affiliated with GeneTex and does not endorse this product.



### GTx100443 WB Image

Non-transfected (-) and transfected (+) MCF-7 whole cell extracts (30 µg) were separated by 5% SDS-PAGE, and the membrane was blotted with E-Cadherin antibody (GTx100443) diluted at 1:7000. The HRP-conjugated anti-rabbit IgG antibody (GTx213110-01) was used to detect the primary antibody.



### GTx100443 IHC-P Image

E-Cadherin antibody detects E-Cadherin protein at cell membrane and cytoplasm by immunohistochemical analysis.

Sample: Paraffin-embedded rat duodenum.

E-Cadherin stained by E-Cadherin antibody (GTx100443) diluted at 1:1000.

Antigen Retrieval: Citrate buffer, pH 6.0, 15 min



For full product information, images and publications, please visit our [website](https://www.genetex.com).