

p21 Cip1 antibody

Cat. No. GTX100444

Host	Rabbit
Clonality	Polyclonal
Isotype	IgG
Application	WB, ICC/IF
Reactivity	Human, Rat

Reference (16)

★★★★☆ Review (1)

Package
100 µl, 25 µl

APPLICATION

Application Note

*Optimal dilutions/concentrations should be determined by the researcher.

Suggested dilution	Recommended dilution
WB	1:500-1:3000
ICC/IF	1:100-1:1000

Not tested in other applications.

Calculated MW 18 kDa. ([Note](#))

PROPERTIES

Form	Liquid
Buffer	PBS, 20% Glycerol
Preservative	0.01% Thimerosal
Storage	Store as concentrated solution. Centrifuge briefly prior to opening vial. For short-term storage (1-2 weeks), store at 4°C. For long-term storage, aliquot and store at -20°C or below. Avoid multiple freeze-thaw cycles.
Concentration	1 mg/ml (Please refer to the vial label for the specific concentration.)
Immunogen	Recombinant protein encompassing a sequence within the center region of human p21 Cip1. The exact sequence is proprietary.
Purification	Purified by antigen-affinity chromatography.
Conjugation	Unconjugated

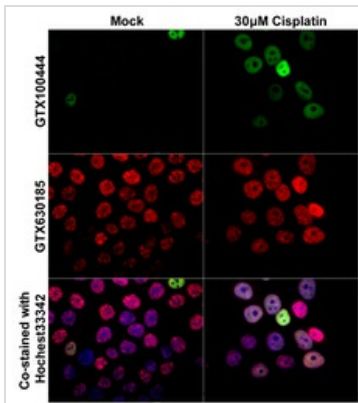
Note

For laboratory research use only. Not for any clinical, therapeutic, or diagnostic use in humans or animals. Not for animal or human consumption.

Purchasers shall not, and agree not to enable third parties to, analyze, copy, reverse engineer or otherwise attempt to determine the structure or sequence of the product.



For full product information, images and publications, please visit our [website](#).

DATA IMAGES

GTx100444 ICC/IF Image

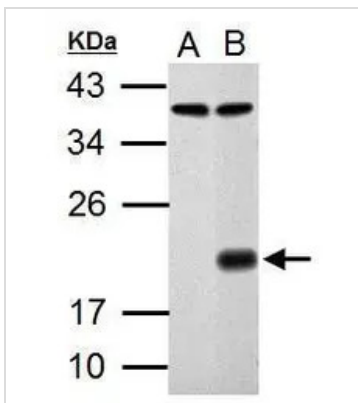
p21 Cip1 antibody detects p21 Cip1 protein at nucleus by immunofluorescent analysis.

Samples: HCT116 cells mock (left) and treated with 30 μ M Cisplatin for 24 hrs (right) were fixed in 4% paraformaldehyde at RT for 15 min.

Green: p21 Cip1 protein stained by p21 Cip1 antibody (GTx100444) diluted at 1:1000.

Red: Histone H3S10ph (phospho Ser10), a nucleus marker, stained by Histone H3S10ph (phospho Ser10) antibody [GT921] (GTx630185) diluted at 1:500.

Blue: Hoechst 33342 staining.


GTx100444 WB Image

Sample (30 μ g of whole cell lysate)

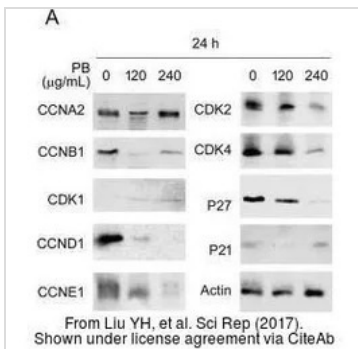
A: HCT116

B: HCT116 treated with 30 μ M cisplatin for 24 hr

12% SDS PAGE

GTx100444 diluted at 1:1000

The HRP-conjugated anti-rabbit IgG antibody (GTx213110-01) was used to detect the primary antibody.


GTx100444 WB Image

The data was published in the journal Sci Rep in 2017. [PMID: 28134285](https://doi.org/10.1038/s41598-017-28134-2)



For full product information, images and publications, please visit our [website](https://www.genetex.com).