

p27 Kip1 antibody

Cat No. GTX100446

Host	Rabbit
Clonality	Polyclonal
Isotype	IgG
Application	WB, ICC/IF, IHC-P, IHC-Fr, IP, IHC
Reactivity	Human, Mouse

Reference (17)

 Review (1)

Package

100 µl, 25 µl

APPLICATION

Application Note

*Optimal dilutions/concentrations should be determined by the researcher.

Suggested dilution	Dilution
WB	1:500-1:3000
ICC/IF	1:100-1:1000
IHC-P	1:100-1:1000
IHC-Fr	1:100-1:1000
IP	1:100-1:500
IHC	Assay dependent

Not tested in other applications.

Calculated MW 22 kDa. ([Note](#))**Specificity/Sensitivity** IP/MS validation was supported by references (PMID:30377371)

PROPERTIES

Form	Liquid
Buffer	1XPBS, 1% BSA, 20% Glycerol (pH7). 0.025% ProClin 300 was added as a preservative.
Storage	Store as concentrated solution. Centrifuge briefly prior to opening vial. For short-term storage (1-2 weeks), store at 4°C. For long-term storage, aliquot and store at -20°C or below. Avoid multiple freeze-thaw cycles.
Concentration	0.28 mg/ml (Please refer to the vial label for the specific concentration.)
Immunogen	Recombinant protein encompassing a sequence within the center region of human p27 Kip1. The exact sequence is proprietary.
Purification	Purified by antigen-affinity chromatography.
Conjugation	Unconjugated

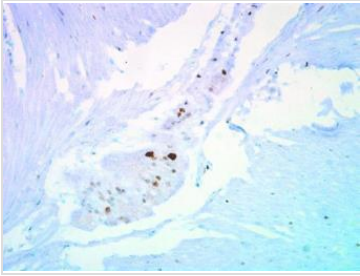


For full product information, images and publications, please visit our [website](#).

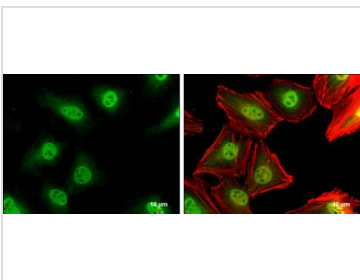
Date 2020 / 07 / 13 Page 1 of 2

Note For laboratory use only. Not for any clinical, therapeutic, or diagnostic use in humans or animals. Not for animal or human consumption.

DATA IMAGES

**GTX100446 IHC-P Image**

Immunohistochemical staining of human ulcerative colitis tissue using anti-p27 Kip1 antibody (GTX100446).

**GTX100446 ICC/IF Image**

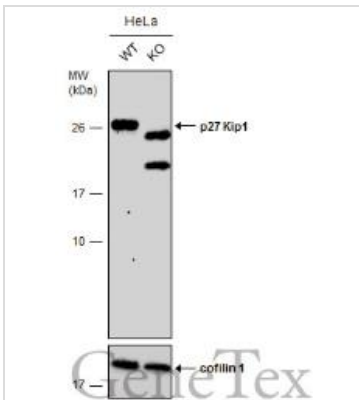
p27 Kip1 antibody detects p27 Kip1 protein at cytoplasm and nucleus by immunofluorescent analysis.

Sample: HeLa cells were fixed in 4% paraformaldehyde at RT for 15 min.

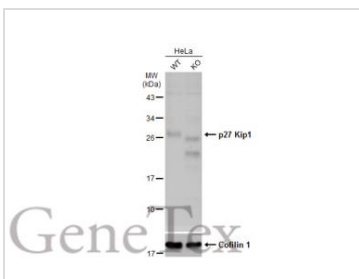
Green: p27 Kip1 protein stained by p27 Kip1 antibody (GTX100446) diluted at 1:500.

Red: phalloidin, a cytoskeleton marker, diluted at 1:200.

Scale bar = 10 μ m.

**GTX100446 WB Image**

Wild-type (WT) and p27 Kip1 knockout (KO) HeLa cell extracts (30 μ g) were separated by 12% SDS-PAGE, and the membrane was blotted with p27 Kip1 antibody (GTX100446) diluted at 1:500. The HRP-conjugated anti-rabbit IgG antibody (GTX213110-01) was used to detect the primary antibody.

**GTX100446 WB Image**

Wild-type (WT) and p27 Kip1 knockout (KO) HeLa cell extracts (30 μ g) were separated by 12% SDS-PAGE, and the membrane was blotted with p27 Kip1 antibody (GTX100446) diluted at 1:500. The HRP-conjugated anti-rabbit IgG antibody (GTX213110-01) was used to detect the primary antibody, and the signal was developed with Trident femto Western HRP Substrate.



For full product information, images and publications, please visit our [website](#).