

EGFR antibody [C2C3], C-term

Cat. No. GTX100448

Host	Rabbit
Clonality	Polyclonal
Isotype	IgG
Applications	WB, ICC/IF, IHC-P, FCM, IP
Reactivity	Human, Mouse, Rat

References (8)

★★★★☆ Review (7)

Package

100 µl, 25 µl

Applications

Application Note

*Optimal dilutions/concentrations should be determined by the researcher.

Suggested dilution	Recommended dilution
WB	1:500-1:3000
ICC/IF	1:100-1:1000
IHC-P	1:100-1:1000
FCM	Assay dependent
IP	1:100-1:500

Not tested in other applications.

Calculated MW	134 kDa. (Note)
Observed MW (kDa)	180 kDa.
Product Note	IP/MS validation is based on published data (PMID: 30377372).

Properties

Form	Liquid
Buffer	PBS, 1% BSA, 20% Glycerol
Preservative	0.025% ProClin 300
Storage	Store as concentrated solution. Centrifuge briefly prior to opening vial. For short-term storage (1-2 weeks), store at 4°C. For long-term storage, aliquot and store at -20°C or below. Avoid multiple freeze-thaw cycles.
Concentration	0.28 mg/ml (Please refer to the vial label for the specific concentration.)
Immunogen	Recombinant protein encompassing a sequence within the Intracellular domain of human EGFR. The exact sequence is proprietary.
Purification	Purified by antigen-affinity chromatography.

For full product information, images and publications, please visit our [website](#).

Date 2026 / 01 / 09 Page 1 of 2

Conjugation

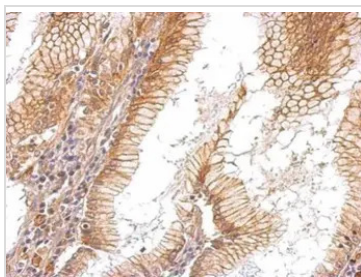
Unconjugated

Note

For laboratory research use only. Not for any clinical, therapeutic, or diagnostic use in humans or animals. Not for animal or human consumption.

Purchasers shall not, and agree not to enable third parties to, analyze, copy, reverse engineer or otherwise attempt to determine the structure or sequence of the product.

DATA IMAGES



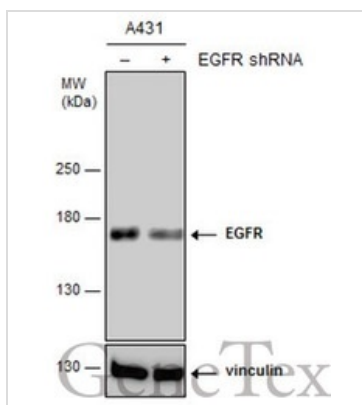
GTx100448 IHC-P Image

EGFR antibody [C2C3], C-term detects EGFR protein at membrane on human gastric cancer by immunohistochemical analysis.

Sample: Paraffin-embedded gastric cancer.

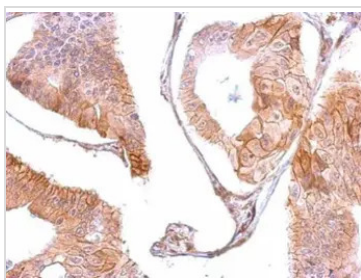
EGFR antibody [C2C3], C-term (GTx100448) dilution: 1:500.

Antigen Retrieval: Trilogy™ (EDTA based, pH 8.0) buffer, 15min



GTx100448 WB Image

Non-transfected (-) and transfected (+) A431 whole cell extracts (15 µg) were separated by 5% SDS-PAGE, and the membrane was blotted with EGFR antibody [C2C3], C-term (GTx100448) diluted at 1:6000. The HRP-conjugated anti-rabbit IgG antibody (GTx213110-01) was used to detect the primary antibody.



GTx100448 IHC-P Image

EGFR antibody [C2C3], C-term detects EGFR protein at membrane on human gastric cancer by immunohistochemical analysis.

Sample: Paraffin-embedded gastric cancer .

EGFR antibody [C2C3], C-term (GTx100448) dilution: 1:500.

Antigen Retrieval: Trilogy™ (EDTA based, pH 8.0) buffer, 15min



For full product information, images and publications, please visit our [website](https://www.genetex.com).