

## IGFBP3 antibody [N2C3]

Cat. No. GTX100454

|              |                   |
|--------------|-------------------|
| Host         | Rabbit            |
| Clonality    | Polyclonal        |
| Isotype      | IgG               |
| Applications | WB, IHC-P, IHC-Fr |
| Reactivity   | Human, Mouse, Rat |

References ( 4 )

Package

100 µl, 25 µl

## Applications

## Application Note

\*Optimal dilutions/concentrations should be determined by the researcher.

| Suggested dilution | Recommended dilution |
|--------------------|----------------------|
| WB                 | 1:500-1:3000         |
| IHC-P              | Assay dependent      |
| IHC-Fr             | 1:100-1:1000         |

Not tested in other applications.

Calculated MW 32 kDa. ( [Note](#) )

## Properties

|               |  |
|---------------|--|
| Form          | Liquid   |
| Buffer        | PBS, 20% Glycerol  |
| Preservative  | 0.025% ProClin 300   |
| Storage       | Store as concentrated solution. Centrifuge briefly prior to opening vial. For short-term storage (1-2 weeks), store at 4°C. For long-term storage, aliquot and store at -20°C or below. Avoid multiple freeze-thaw cycles. |
| Concentration | 1.31 mg/ml (Please refer to the vial label for the specific concentration.)  |
| Immunogen     | Recombinant protein encompassing a sequence within the center region of human IGFBP3. The exact sequence is proprietary.   |
| Purification  | Purified by antigen-affinity chromatography.   |
| Conjugation   | Unconjugated   |

## Note

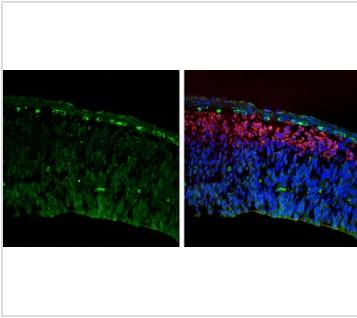
For laboratory research use only. Not for any clinical, therapeutic, or diagnostic use in humans or animals. Not for animal or human consumption.

Purchasers shall not, and agree not to enable third parties to, analyze, copy, reverse engineer or otherwise attempt to determine the structure or sequence of the product.



For full product information, images and publications, please visit our [website](#).

## DATA IMAGES



### GTX100454 IHC-Fr Image

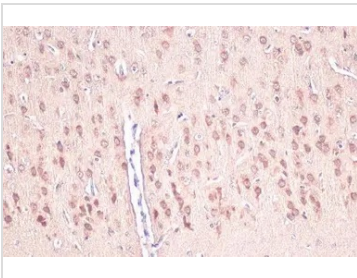
IGFBP3 antibody [N2C3] detects IGFBP3 protein expression by immunohistochemical analysis.

Sample: Frozen sectioned E13.5 Rat brain.

Green: IGFBP3 protein stained by IGFBP3 antibody [N2C3] (GTX100454) diluted at 1:250.

Red: beta Tubulin 3/ TUJ1, a mature neuron marker, stained by beta Tubulin 3/ TUJ1 antibody [GT11710] (GTX631836) diluted at 1:500.

Blue: Fluoroshield with DAPI (GTX30920).



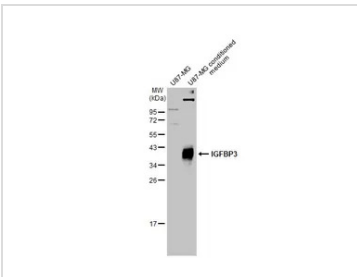
### GTX100454 IHC-P Image

IGFBP3 antibody [N2C3] detects secreted IGFBP3 protein by immunohistochemical analysis.

Sample: Paraffin-embedded rat brain.

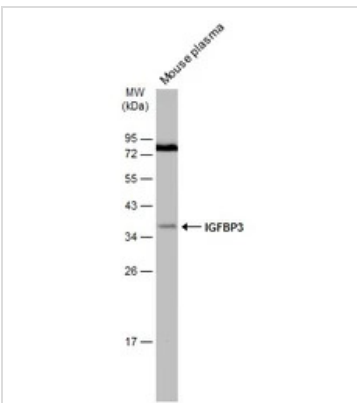
IGFBP3 stained by IGFBP3 antibody [N2C3] (GTX100454) diluted at 1:500.

Antigen Retrieval: Citrate buffer, pH 6.0, 15 min



### GTX100454 WB Image

U87-MG whole cell extract and conditioned medium (30 µg) were separated by 12% SDS-PAGE, and the membrane was blotted with IGFBP3 antibody [N2C3] (GTX100454) diluted at 1:1000. The HRP-conjugated anti-rabbit IgG antibody (GTX213110-01) was used to detect the primary antibody, and the signal was developed with Trident ECL plus-Enhanced.



### GTX100454 WB Image

Mouse plasma (30 µg) was separated by 12% SDS-PAGE, and the membrane was blotted with IGFBP3 antibody (GTX100454) diluted at 1:1000. The HRP-conjugated anti-rabbit IgG antibody (GTX213110-01) was used to detect the primary antibody.



For full product information, images and publications, please visit our [website](https://www.genetex.com).