

Oct4 antibody

Cat. No. GTX100468

Host	Rabbit
Clonality	Polyclonal
Isotype	IgG
Applications	WB, ICC/IF, FCM, IP
Reactivity	Human, Frog

References (4)

Package

100 µl, 25 µl

Applications

Application Note

*Optimal dilutions/concentrations should be determined by the researcher.

Suggested dilution	Recommended dilution
WB	1:500-1:3000
ICC/IF	1:100-1:1000
FCM	1:50-1:200
IP	Assay dependent

Not tested in other applications.

Calculated MW 39 kDa. ([Note](#))

Properties

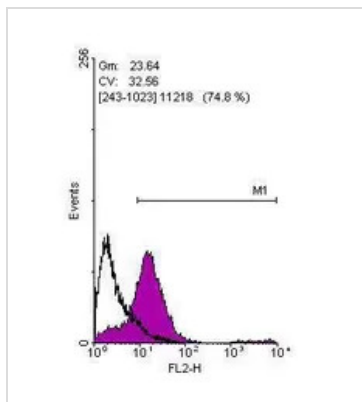
Form	Liquid
Buffer	0.1M Tris, 0.1M Glycine, 10% Glycerol
Preservative	0.01% Thimerosal
Storage	Store as concentrated solution. Centrifuge briefly prior to opening vial. For short-term storage (1-2 weeks), store at 4°C. For long-term storage, aliquot and store at -20°C or below. Avoid multiple freeze-thaw cycles.
Concentration	0.62 mg/ml (Please refer to the vial label for the specific concentration.)
Immunogen	Recombinant protein encompassing a sequence within the center region of human Oct4. The exact sequence is proprietary.
Purification	Purified by antigen-affinity chromatography.
Conjugation	Unconjugated

Note

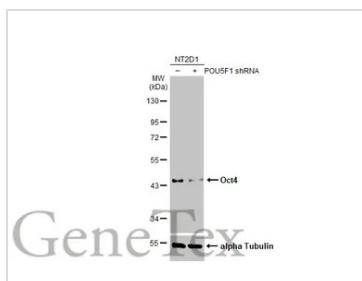
For laboratory research use only. Not for any clinical, therapeutic, or diagnostic use in humans or animals. Not for animal or human consumption.

Purchasers shall not, and agree not to enable third parties to, analyze, copy, reverse engineer or otherwise attempt to determine the structure or sequence of the product.

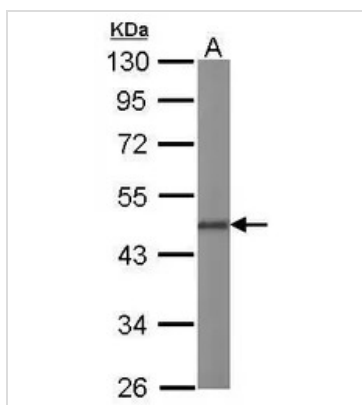
For full product information, images and publications, please visit our [website](#).

DATA IMAGES

GTX100468 FCM Image

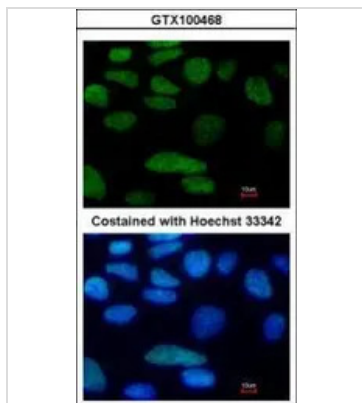
Flow cytometry on human embryonic stem cells, staining with Oct4 (GTX100468) antibody at 1:100 dilution (purple) or rabbit IgG (black).


GTX100468 WB Image

Non-transfected (–) and transfected (+) NT2D1 whole cell extracts (30 µg) were separated by 10% SDS-PAGE, and the membrane was blotted with Oct4 antibody (GTX100468) diluted at 1:2000. The HRP-conjugated anti-rabbit IgG antibody (GTX213110-01) was used to detect the primary antibody, and the signal was developed with Trident ECL plus-Enhanced.


GTX100468 WB Image

Sample (20 ug of whole cell lysate)
A: human ESC
10% SDS PAGE
GTX100468 diluted at 1:500


GTX100468 ICC/IF Image

Immunofluorescence analysis of paraformaldehyde-fixed Human ESC, using Oct4 (GTX100468) antibody at 1:80 dilution.



For full product information, images and publications, please visit our [website](http://www.genetex.com).