

ABAT antibody

Cat. No. GTX100479

Host	Rabbit
Clonality	Polyclonal
Isotype	IgG
Applications	WB, ICC/IF, IHC-P, IHC-Fr
Reactivity	Human, Mouse, Rat

Package
100 µl, 25 µl

Applications

Application Note

*Optimal dilutions/concentrations should be determined by the researcher.

Suggested dilution	Recommended dilution
WB	1:500-1:10000
ICC/IF	1:100-1:1000
IHC-P	1:100-1:1000
IHC-Fr	1:100-1:1000

Not tested in other applications.

Calculated MW 56 kDa. ([Note](#))

Properties

Form	Liquid
Buffer	PBS, 20% Glycerol
Preservative	0.01% Thimerosal
Storage	Store as concentrated solution. Centrifuge briefly prior to opening vial. For short-term storage (1-2 weeks), store at 4°C. For long-term storage, aliquot and store at -20°C or below. Avoid multiple freeze-thaw cycles.
Concentration	1 mg/ml (Please refer to the vial label for the specific concentration.)
Immunogen	Recombinant protein encompassing a sequence within the center region of human ABAT. The exact sequence is proprietary.
Purification	Purified by antigen-affinity chromatography.
Conjugation	Unconjugated

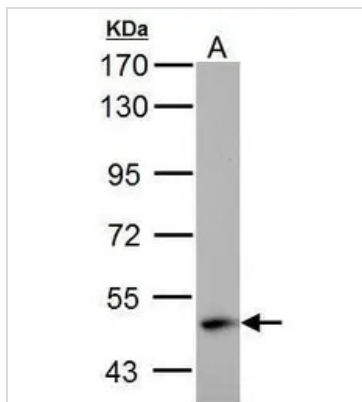
Note

For laboratory research use only. Not for any clinical, therapeutic, or diagnostic use in humans or animals. Not for animal or human consumption.

Purchasers shall not, and agree not to enable third parties to, analyze, copy, reverse engineer or otherwise attempt to determine the structure or sequence of the product.



For full product information, images and publications, please visit our [website](#).

DATA IMAGES

GTx100479 WB Image

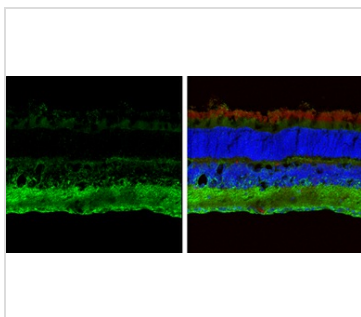
ABAT antibody detects ABAT protein by western blot analysis.

A. 30 µg SK-N-SH whole cell lysate/extract

7.5% SDS-PAGE

ABAT antibody (GTx100479) dilution: 1:1000

The HRP-conjugated anti-rabbit IgG antibody (GTx213110-01) was used to detect the primary antibody.


GTx100479 IHC-Fr Image

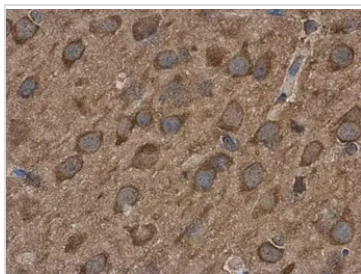
ABAT antibody detects ABAT protein expression by immunohistochemical analysis.

Sample: Frozen sectioned adult mouse retina.

Green: ABAT protein stained by ABAT antibody (GTx100479) diluted at 1:250.

Red: beta Tubulin 3/ TUJ1, stained by beta Tubulin 3/ TUJ1 antibody [GT11710] (GTx631836) diluted at 1:250.

Blue: Fluoroshield with DAPI (GTx30920).

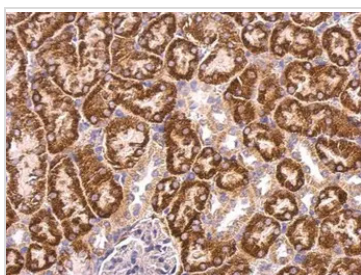

GTx100479 IHC-P Image

ABAT antibody detects ABAT protein at cytoplasm in rat brain by immunohistochemical analysis.

Sample: Paraffin-embedded rat brain.

ABAT antibody (GTx100479) diluted at 1:500.

Antigen Retrieval: Citrate buffer, pH 6.0, 15 min


GTx100479 IHC-P Image

ABAT antibody detects ABAT protein at mitochondria on mouse kidney by immunohistochemical analysis.

Sample: Paraffin-embedded mouse kidney.

ABAT antibody (GTx100479) dilution: 1:500.

Antigen Retrieval: Trilogy™ (EDTA based, pH 8.0) buffer, 15min



For full product information, images and publications, please visit our [website](https://www.genetex.com).