

## ACADM antibody

Cat. No. GTX100488

Host	Rabbit
Clonality	Polyclonal
Isotype	IgG
Application	WB, ICC/IF, IHC-P
Reactivity	Human, Mouse, Rat

Reference ( 10 )

Package

100 µl, 25 µl

## APPLICATION

## Application Note

\*Optimal dilutions/concentrations should be determined by the researcher.

Suggested dilution	Recommended dilution
WB	1:500-1:3000
ICC/IF	1:100-1:1000
IHC-P	1:100-1:1000

Not tested in other applications.

Calculated MW 47 kDa. ( [Note](#) )

## PROPERTIES

Form	Liquid
Buffer	0.1M Tris, 0.1M Glycine, 10% Glycerol
Preservative	0.01% Thimerosal
Storage	Store as concentrated solution. Centrifuge briefly prior to opening vial. For short-term storage (1-2 weeks), store at 4°C. For long-term storage, aliquot and store at -20°C or below. Avoid multiple freeze-thaw cycles.
Concentration	0.55 mg/ml (Please refer to the vial label for the specific concentration.)
Immunogen	Recombinant protein encompassing a sequence within the center region of human ACADM. The exact sequence is proprietary.
Purification	Purified by antigen-affinity chromatography.
Conjugation	Unconjugated

## Note

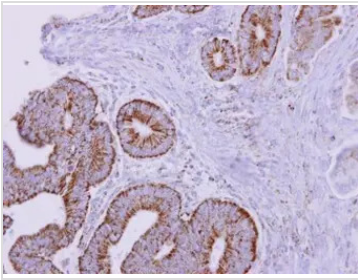
For laboratory research use only. Not for any clinical, therapeutic, or diagnostic use in humans or animals. Not for animal or human consumption.

Purchasers shall not, and agree not to enable third parties to, analyze, copy, reverse engineer or otherwise attempt to determine the structure or sequence of the product.



For full product information, images and publications, please visit our [website](#).

## DATA IMAGES



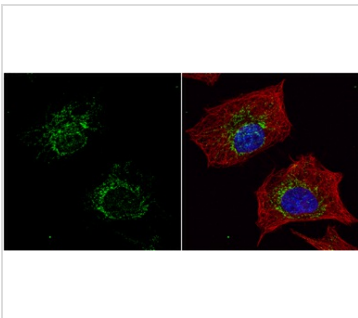
### GTX100488 IHC-P Image

ACADM antibody detects ACADM protein at mitochondria on human colon carcinoma by immunohistochemical analysis.

Sample: Paraffin-embedded colon carcinoma.

ACADM antibody (GTX100488) dilution: 1:250.

Antigen Retrieval: Trilogy™ (EDTA based, pH 8.0) buffer, 15min



### GTX100488 ICC/IF Image

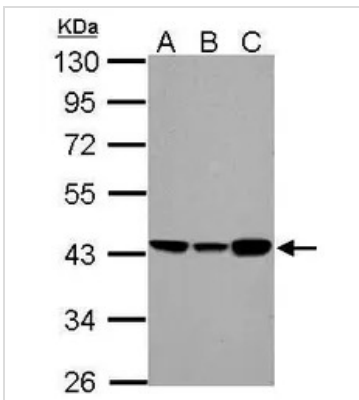
ACADM antibody detects ACADM protein at mitochondria by immunofluorescent analysis.

Sample: HeLa cells were fixed in 4% paraformaldehyde at RT for 15 min.

Green: ACADM protein stained by ACADM antibody (GTX100488) diluted at 1:500.

Red: alpha Tubulin, a cytoskeleton marker, stained by alpha Tubulin antibody [GT114] (GTX628802) diluted at 1:1000.

Blue: Hoechst 33342 staining.



### GTX100488 WB Image

ACADM antibody detects ACADM protein by Western blot analysis.

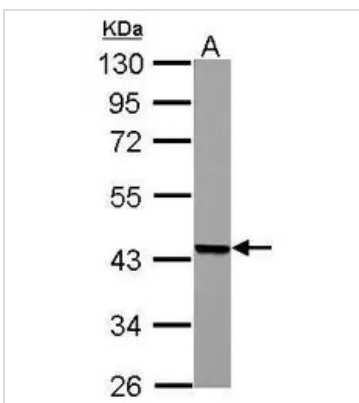
A. 30 µg Neuro2A whole cell lysate/extract

B. 30 µg GL261 whole cell lysate/extract

C. 30 µg C8D30 whole cell lysate/extract

10 % SDS-PAGE

ACADM antibody (GTX100488) dilution: 1:1000



### GTX100488 WB Image

ACADM antibody detects ACADM protein by Western blot analysis.

A. 30 µg PC-12 whole cell lysate/extract

10 % SDS-PAGE

ACADM antibody (GTX100488) dilution: 1:1000



For full product information, images and publications, please visit our [website](https://www.genetex.com).