

XIAP antibody [C1C3]

Cat. No. GTX100496

Host	Rabbit
Clonality	Polyclonal
Isotype	IgG
Applications	WB, ICC/IF, IHC-P
Reactivity	Human, Mouse

Package
100 µl, 25 µl

Applications

Application Note

*Optimal dilutions/concentrations should be determined by the researcher.

Suggested dilution	Recommended dilution
WB	1:500-1:3000
ICC/IF	1:100-1:1000
IHC-P	1:100-1:1000

Not tested in other applications.

Calculated MW 57 kDa. ([Note](#))

Properties

Form	Liquid
Buffer	PBS, 1% BSA, 20% Glycerol
Preservative	0.01% Thimerosal
Storage	Store as concentrated solution. Centrifuge briefly prior to opening vial. For short-term storage (1-2 weeks), store at 4°C. For long-term storage, aliquot and store at -20°C or below. Avoid multiple freeze-thaw cycles.
Concentration	1 mg/ml (Please refer to the vial label for the specific concentration.)
Immunogen	Recombinant protein encompassing a sequence within the C-terminus region of human XIAP. The exact sequence is proprietary.
Purification	Purified by antigen-affinity chromatography.
Conjugation	Unconjugated

Note

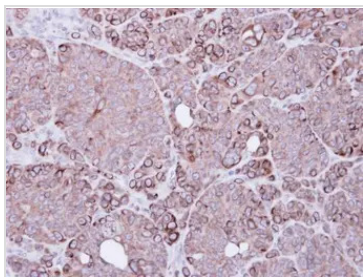
For laboratory research use only. Not for any clinical, therapeutic, or diagnostic use in humans or animals. Not for animal or human consumption.

Purchasers shall not, and agree not to enable third parties to, analyze, copy, reverse engineer or otherwise attempt to determine the structure or sequence of the product.



For full product information, images and publications, please visit our [website](#).

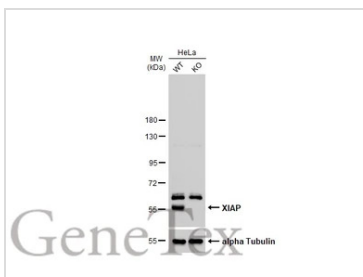
DATA IMAGES



GTXTX100496 IHC-P Image

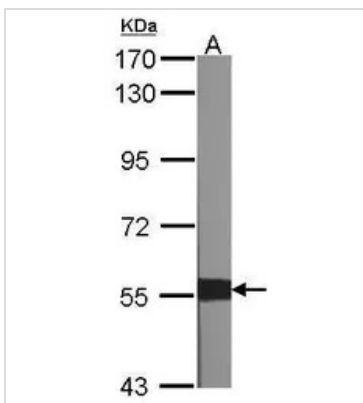
Immunohistochemical analysis of paraffin-embedded SW480 xenograft, using BIRC4(GTXTX100496) antibody at 1:500 dilution.

Antigen Retrieval: Trilogy™ (EDTA based, pH 8.0) buffer, 15min



GTXTX100496 WB Image

Wild-type (WT) and XIAP knockout (KO) HeLa cell extracts (30 µg) were separated by 7.5% SDS-PAGE, and the membrane was blotted with XIAP antibody [C1C3] (GTXTX100496) diluted at 1:500. The HRP-conjugated anti-rabbit IgG antibody (GTXTX213110-01) was used to detect the primary antibody.



GTXTX100496 WB Image

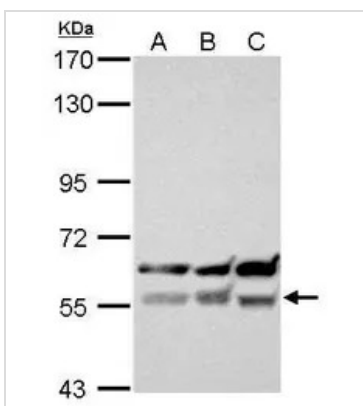
Sample (30 µg of whole cell lysate)

A:NIH-3T3

7.5% SDS PAGE

GTXTX100496 diluted at 1:1000

The HRP-conjugated anti-rabbit IgG antibody (GTXTX213110-01) was used to detect the primary antibody.



GTXTX100496 WB Image

XIAP antibody [C1C3] detects XIAP protein by western blot analysis.

A. 30 µg 293T whole cell lysate/extract

B. 30 µg A431 whole cell lysate/extract

C. 30 µg H1299 whole cell lysate/extract

7.5% SDS-PAGE

XIAP antibody [C1C3] (GTXTX100496) dilution: 1:500

The HRP-conjugated anti-rabbit IgG antibody (GTXTX213110-01) was used to detect the primary antibody.



For full product information, images and publications, please visit our [website](http://www.genetex.com).