

Her2 / ErbB2 antibody

Cat. No. GTX100509

Host	Rabbit
Clonality	Polyclonal
Isotype	IgG
Applications	WB, IHC-P
Reactivity	Human

References (3)

★★★★★ Review (2)

Package

100 µl, 25 µl

PRODUCT

Summary

HER2 antibody recognizes HER2 protein, also known as proto-oncogene Neu or ERBB2 (predicted molecular weight of 138 kDa). HER2 is a member of the human epidermal growth factor receptor (EGFR) family of receptor tyrosine kinases. It shares 50% sequence identity with EGFR protein, but involves different signaling pathways. HER2 can heterodimerize with EGFR protein or homodimerize when it is present in high concentrations.

Applications

Application Note

*Optimal dilutions/concentrations should be determined by the researcher.

Suggested dilution	Recommended dilution
WB	1:500-1:20000
IHC-P	1:100-1:1000

Not tested in other applications.

Calculated MW 138 kDa. ([Note](#))

Properties

Form	Liquid
Buffer	PBS, 1% BSA, 20% Glycerol
Preservative	0.01% Thimerosal
Storage	Store as concentrated solution. Centrifuge briefly prior to opening vial. For short-term storage (1-2 weeks), store at 4°C. For long-term storage, aliquot and store at -20°C or below. Avoid multiple freeze-thaw cycles.
Concentration	0.07 mg/ml (Please refer to the vial label for the specific concentration.)
Immunogen	Recombinant protein encompassing a sequence within the Intracellular domain of human Her2 / ErbB2. The exact sequence is proprietary.
Purification	Purified by antigen-affinity chromatography.
Conjugation	Unconjugated



For full product information, images and publications, please visit our [website](#).

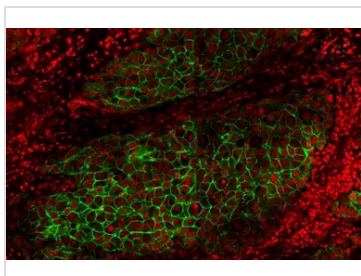
Date 2026 / 02 / 10 Page 1 of 2

For laboratory research use only. Not for any clinical, therapeutic, or diagnostic use in humans or animals. Not for animal or human consumption.

Note

Purchasers shall not, and agree not to enable third parties to, analyze, copy, reverse engineer or otherwise attempt to determine the structure or sequence of the product.

DATA IMAGES

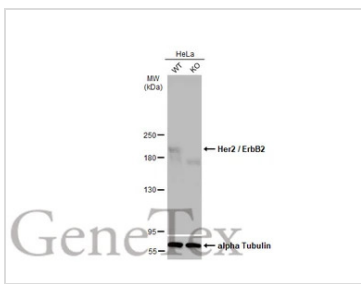


GTX100509 IHC-P Image

Her2 / ErbB2 antibody detects Her2 / ErbB2 protein at cell membrane by immunohistochemical analysis.

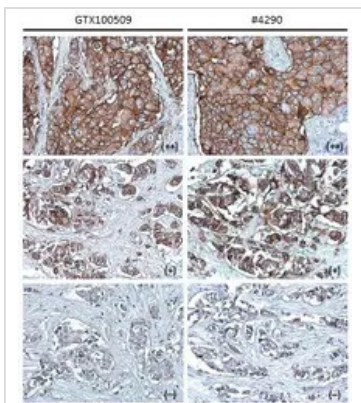
Sample: Paraffin-embedded human breast carcinoma.

Green: Her2 / ErbB2 stained by Her2 / ErbB2 antibody (GTX100509) diluted at 1:50.



GTX100509 WB Image

Wild-type (WT) and Her2 / ErbB2 knockout (KO) HeLa cell extracts (30 µg) were separated by 5% SDS-PAGE, and the membrane was blotted with Her2 / ErbB2 antibody (GTX100509) diluted at 1:5000. The HRP-conjugated anti-rabbit IgG antibody (GTX213110-01) was used to detect the primary antibody, and the signal was developed with Trident femto Western HRP Substrate.



GTX100509 IHC-P Image

Her2 / ErbB2 antibody [C2C3], C-term detects Her2 / ErbB2 protein at cell membrane in human breast carcinoma by immunohistochemical analysis.

Sample: Strong positive (++), low positive (+) and negative tissue slides cores assessed using Quantitative Digital Pathology.

Her2 / ErbB2 antibody [C2C3], C-term (GTX100509) diluted at 1:500, and competitor's antibody (CST#4290) diluted at 1:100.

Antigen Retrieval: Trilogy™ (EDTA based, pH 8.0) buffer, 15min

*The competitor is not affiliated with GeneTex and does not endorse this product.



For full product information, images and publications, please visit our [website](https://www.genetex.com).