

## HMGA2 antibody - CHIP grade

**Cat. No. GTX100519**

<b>Host</b>	Rabbit
<b>Clonality</b>	Polyclonal
<b>Isotype</b>	IgG
<b>Applications</b>	WB, ICC/IF, IHC-P, IP, ChIP assay
<b>Reactivity</b>	Human, Mouse, Rat

References ( 22 )

★★★★★ Review ( 2 )

Package

100 µl, 25 µl

## Applications

**Application Note**

\*Optimal dilutions/concentrations should be determined by the researcher.

Suggested dilution	Recommended dilution
WB	1:5000-1:50000
ICC/IF	1:100-1:1000
IHC-P	1:100-1:1000
IP	1:100-1:500
ChIP assay	Assay dependent

Not tested in other applications.

**Calculated MW** 12 kDa. ( [Note](#) )

## Properties

<b>Form</b>	Liquid
<b>Buffer</b>	PBS, 1% BSA, 20% Glycerol
<b>Preservative</b>	0.025% ProClin 300
<b>Storage</b>	Store as concentrated solution. Centrifuge briefly prior to opening vial. For short-term storage (1-2 weeks), store at 4°C. For long-term storage, aliquot and store at -20°C or below. Avoid multiple freeze-thaw cycles.
<b>Concentration</b>	0.13 mg/ml (Please refer to the vial label for the specific concentration.)
<b>Immunogen</b>	Recombinant protein encompassing a sequence within the center region of human HMGA2. The exact sequence is proprietary.
<b>Purification</b>	Purified by antigen-affinity chromatography.
<b>Conjugation</b>	Unconjugated

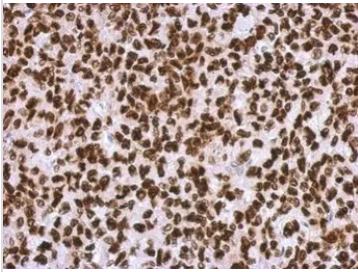


For full product information, images and publications, please visit our [website](#).

**Note**

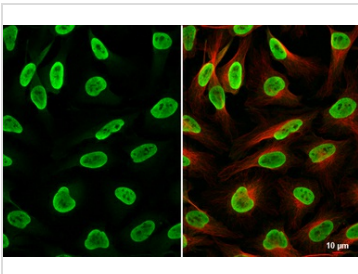
For *In vitro* laboratory use only. Not for any clinical, therapeutic, or diagnostic use in humans or animals. Not for animal or human consumption. Due to intellectual property restrictions, this product is not available for purchase in AT, BE, CH, DE, DK, ES, FR, GB, GR, IE, IT, LI, LU, MC, NL, PT, SE.

## DATA IMAGES

**GTX100519 IHC-P Image**

Immunohistochemical analysis of paraffin-embedded H1299 xenograft, using HMGA2(GTX100519) antibody at 1:500 dilution.

Antigen Retrieval: Trilogy™ (EDTA based, pH 8.0) buffer, 15min

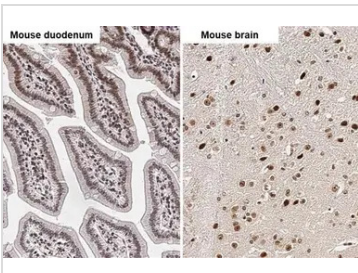
**GTX100519 ICC/IF Image**

HMGA2 antibody - ChIP grade detects HMGA2 protein at nucleus by immunofluorescent analysis.

Sample: HeLa cells were fixed in 4% paraformaldehyde at RT for 15 min.

Green: HMGA2 stained by HMGA2 antibody - ChIP grade (GTX100519) diluted at 1:500.

Red: alpha Tubulin, a cytoskeleton marker, stained by alpha Tubulin antibody [GT114] (GTX628802) diluted at 1:1000.

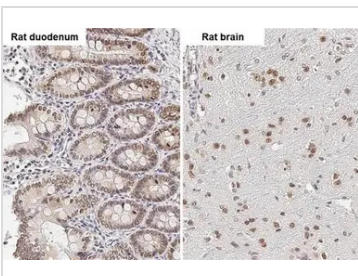
**GTX100519 IHC-P Image**

HMGA2 antibody - ChIP grade detects HMGA2 - ChIP grade protein by immunohistochemical analysis.

Sample: Paraffin-embedded mouse tissues.

HMGA2 - ChIP grade stained by HMGA2 antibody - ChIP grade (GTX100519) diluted at 1:500.

Antigen Retrieval: Citrate buffer, pH 6.0, 15 min

**GTX100519 IHC-P Image**

HMGA2 antibody - ChIP grade detects HMGA2 - ChIP grade protein by immunohistochemical analysis.

Sample: Paraffin-embedded rat tissues.

HMGA2 - ChIP grade stained by HMGA2 antibody - ChIP grade (GTX100519) diluted at 1:500.

Antigen Retrieval: Citrate buffer, pH 6.0, 15 min



For full product information, images and publications, please visit our [website](#).