

# MMP1 antibody

**Cat. No. GTX100534**

<b>Host</b>	Rabbit
<b>Clonality</b>	Polyclonal
<b>Isotype</b>	IgG
<b>Applications</b>	WB, ICC/IF, IHC-P
<b>Reactivity</b>	Human, Mouse

References ( 28 )

★★★★☆ Review ( 4 )

Package

100 µl, 25 µl

## Applications

### Application Note

\*Optimal dilutions/concentrations should be determined by the researcher.

Suggested dilution	Recommended dilution
WB	1:500-1:3000
ICC/IF	Assay dependent
IHC-P	1:100-1:1000

Not tested in other applications.

**Calculated MW** 54 kDa. ( [Note](#) )

## Properties

<b>Form</b>	Liquid
<b>Buffer</b>	PBS, 20% Glycerol
<b>Preservative</b>	0.025% ProClin 300
<b>Storage</b>	Store as concentrated solution. Centrifuge briefly prior to opening vial. For short-term storage (1-2 weeks), store at 4°C. For long-term storage, aliquot and store at -20°C or below. Avoid multiple freeze-thaw cycles.
<b>Concentration</b>	1 mg/ml (Please refer to the vial label for the specific concentration.)
<b>Immunogen</b>	Recombinant protein encompassing a sequence within the center region of human MMP1. The exact sequence is proprietary.
<b>Purification</b>	Purified by antigen-affinity chromatography.
<b>Conjugation</b>	Unconjugated

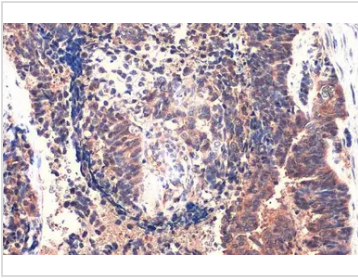
### Note

For laboratory research use only. Not for any clinical, therapeutic, or diagnostic use in humans or animals. Not for animal or human consumption.

Purchasers shall not, and agree not to enable third parties to, analyze, copy, reverse engineer or otherwise attempt to determine the structure or sequence of the product.



For full product information, images and publications, please visit our [website](#).

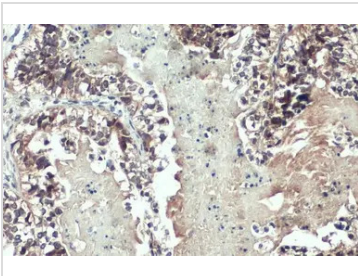
**DATA IMAGES**

**GTX100534 IHC-P Image**

MMP1 antibody detects MMP1 protein at cytoplasm by immunohistochemical analysis.

Sample: Paraffin-embedded human endometrial carcinoma.

MMP1 stained by MMP1 antibody (GTX100534) diluted at 1:500.

Antigen Retrieval: Citrate buffer, pH 6.0, 15 min

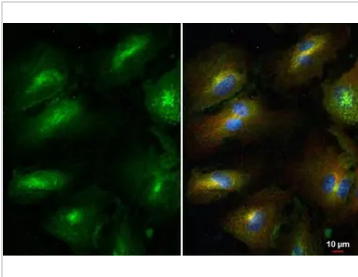

**GTX100534 IHC-P Image**

MMP1 antibody detects MMP1 protein at cytoplasm by immunohistochemical analysis.

Sample: Paraffin-embedded human endometrial carcinoma.

MMP1 stained by MMP1 antibody (GTX100534) diluted at 1:500.

Antigen Retrieval: Citrate buffer, pH 6.0, 15 min


**GTX100534 ICC/IF Image**

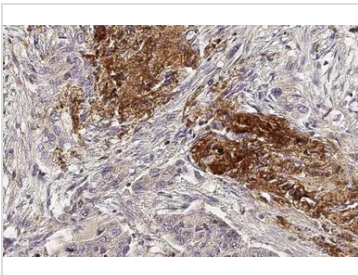
MMP1 antibody detects MMP1 protein at cytoplasm by immunofluorescent analysis.

Sample: HUVEC cells were fixed in 4% paraformaldehyde at RT for 15 min.

Green: MMP1 stained by MMP1 antibody (GTX100534) diluted at 1:500.

Red: alpha Tubulin, a cytoskeleton marker, stained by alpha Tubulin antibody [GT114] (GTX628802) diluted at 1:1000.

Blue: Fluoroshield with DAPI (GTX30920).

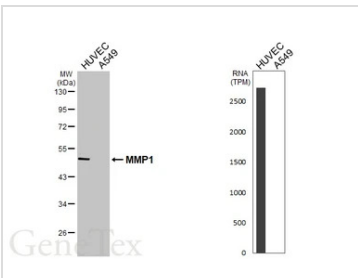

**GTX100534 IHC-P Image**

MMP1 antibody detects secreted MMP1 protein by immunohistochemical analysis.

Sample: Paraffin-embedded human lung cancer.

MMP1 stained by MMP1 antibody (GTX100534) diluted at 1:500.

Antigen Retrieval: Citrate buffer, pH 6.0, 15 min


**GTX100534 WB Image**

Various whole cell extracts (30 µg) were separated by 10% SDS-PAGE, and the membrane was blotted with MMP1 antibody (GTX100534) diluted at 1:1000. The HRP-conjugated anti-rabbit IgG antibody (GTX213110-01) was used to detect the primary antibody. Corresponding RNA expression data are based on Human Protein Atlas program.



For full product information, images and publications, please visit our [website](https://www.genetex.com).