

## NDRG1 antibody

Cat. No. GTX100537

Host	Rabbit
Clonality	Polyclonal
Isotype	IgG
Applications	WB, IHC-P
Reactivity	Human, Mouse, Rat

References ( 2 )

Package

100 µl, 25 µl

## Applications

## Application Note

\*Optimal dilutions/concentrations should be determined by the researcher.

Suggested dilution	Recommended dilution
WB	1:500-1:3000
IHC-P	1:100-1:1000

Not tested in other applications.

Calculated MW 43 kDa. ( [Note](#) )

## Properties

Form	Liquid
Buffer	0.1M Tris, 0.1M Glycine, 10% Glycerol
Preservative	0.01% Thimerosal
Storage	Store as concentrated solution. Centrifuge briefly prior to opening vial. For short-term storage (1-2 weeks), store at 4°C. For long-term storage, aliquot and store at -20°C or below. Avoid multiple freeze-thaw cycles.
Concentration	0.67 mg/ml (Please refer to the vial label for the specific concentration.)
Immunogen	Recombinant protein encompassing a sequence within the center region of human NDRG1. The exact sequence is proprietary.
Purification	Purified by antigen-affinity chromatography.
Conjugation	Unconjugated

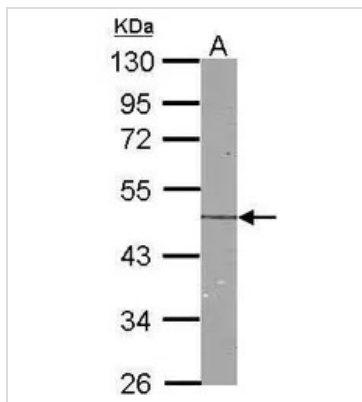
## Note

For laboratory research use only. Not for any clinical, therapeutic, or diagnostic use in humans or animals. Not for animal or human consumption.

Purchasers shall not, and agree not to enable third parties to, analyze, copy, reverse engineer or otherwise attempt to determine the structure or sequence of the product.



For full product information, images and publications, please visit our [website](#).

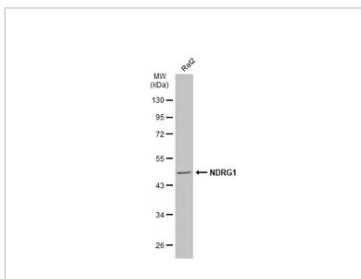
**DATA IMAGES**

**GTx100537 WB Image**

Sample (30 ug of whole cell lysate)

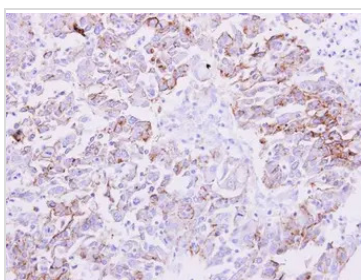
A:NIH-3T3

10% SDS PAGE

GTx100537 diluted at 1:1000


**GTx100537 WB Image**

Whole cell extract (30 µg) was separated by 10% SDS-PAGE, and the membrane was blotted with NDRG1 antibody (GTx100537) diluted at 1:1000. The HRP-conjugated anti-rabbit IgG antibody (GTx213110-01) was used to detect the primary antibody, and the signal was developed with Trident ECL plus-Enhanced.

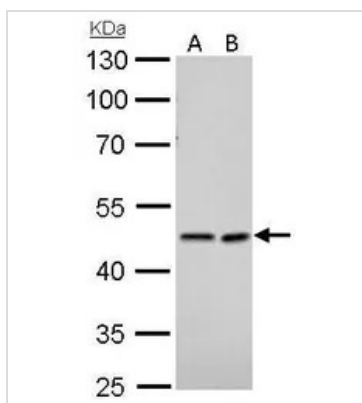

**GTx100537 IHC-P Image**

NDRG1 antibody detects NDRG1 protein at membrane on human liver carcinoma by immunohistochemical analysis.

Sample: Paraffin-embedded liver carcinoma.

NDRG1 antibody (GTx100537) dilution: 1:500.

Antigen Retrieval: Trilogy™ (EDTA based, pH 8.0) buffer, 15min


**GTx100537 WB Image**

NDRG1 antibody detects NDRG1 protein by Western blot analysis.

A. 30 µg 293T whole cell lysate/extract

B. 30 µg HepG2 whole cell lysate/extract

10 % SDS-PAGE

NDRG1 antibody (GTx100537) dilution: 1:1000



For full product information, images and publications, please visit our [website](http://www.genetex.com).