

PCNA antibody

Cat. No. GTX100539

Host	Rabbit
Clonality	Polyclonal
Isotype	IgG
Applications	WB, ICC/IF, IHC-P, IP
Reactivity	Human, Mouse, Rat, Drosophila, Golden Syrian Hamster

References (103)

★★★★☆ Review (8)

Package

100 µl, 25 µl

PRODUCT

Summary

PCNA antibody recognizes the proliferating cell nuclear antigen (PCNA), a cofactor of DNA polymerase delta with a predicted molecular weight of 29 kDa. PCNA is important for DNA synthesis, repair, and epigenetic modifications, and also serves as an organelle marker of the nucleus. PCNA antibody can be used for distinguishing between early, middle, and late S-phase of the cell cycle as well as grading of different neoplasms.

Applications

Application Note

*Optimal dilutions/concentrations should be determined by the researcher.

Suggested dilution	Recommended dilution
WB	1:500-1:3000
ICC/IF	1:100-1:1000
IHC-P	1:100-1:1000
IP	1:100-1:500

Not tested in other applications.

Calculated MW 29 kDa. ([Note](#))

Product Note IP/MS validation is based on published data (PMID: 30377373).

Properties

Form	Liquid
Buffer	PBS, 1% BSA, 20% Glycerol
Preservative	0.025% ProClin 300
Storage	Store as concentrated solution. Centrifuge briefly prior to opening vial. For short-term storage (1-2 weeks), store at 4°C. For long-term storage, aliquot and store at -20°C or below. Avoid multiple freeze-thaw cycles.
Concentration	0.43 mg/ml (Please refer to the vial label for the specific concentration.)
Immunogen	Recombinant protein encompassing a sequence within the center region of human PCNA. The exact sequence is proprietary.



For full product information, images and publications, please visit our [website](#).

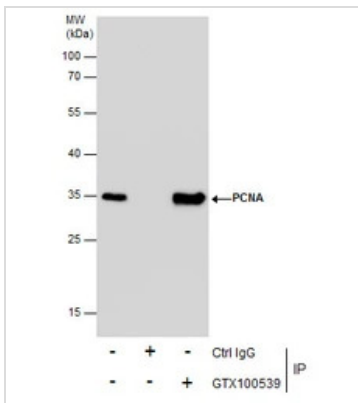
Date 2026 / 04 / 03 Page 1 of 2

Purification Purified by antigen-affinity chromatography.

Conjugation Unconjugated

For laboratory research use only. Not for any clinical, therapeutic, or diagnostic use in humans or animals. Not for animal or human consumption.

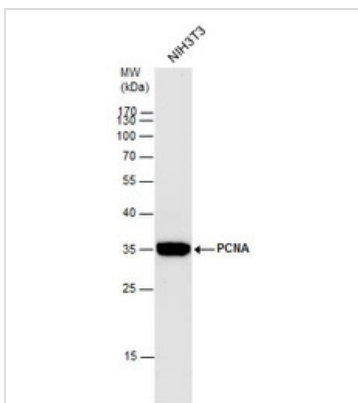
Note Purchasers shall not, and agree not to enable third parties to, analyze, copy, reverse engineer or otherwise attempt to determine the structure or sequence of the product.

DATA IMAGES

GTX100539 IP Image

Immunoprecipitation of PCBP2 protein from HeLa whole cell extracts using 5 µg of PCBP2 antibody (GTX100539).

Western blot analysis was performed using PCBP2 antibody (GTX100539).

EasyBlot anti-Rabbit IgG (GTX221666-01) was used as a secondary reagent.


GTX100539 WB Image

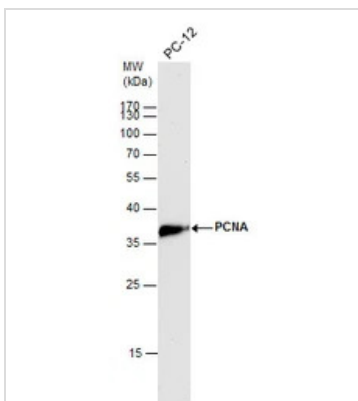
PCNA antibody detects PCNA protein by western blot analysis.

A. 30 µg NIH-3T3 whole cell lysate/extract

12% SDS-PAGE

PCNA antibody (GTX100539) dilution: 1:2500

The HRP-conjugated anti-rabbit IgG antibody (GTX213110-01) was used to detect the primary antibody.


GTX100539 WB Image

PCNA antibody detects PCNA protein by western blot analysis.

A. 30 µg PC-12 whole cell lysate/extract

12% SDS-PAGE

PCNA antibody (GTX100539) dilution: 1:2500

The HRP-conjugated anti-rabbit IgG antibody (GTX213110-01) was used to detect the primary antibody.



For full product information, images and publications, please visit our [website](#).