

Rb antibody

Cat. No. GTX100545

Host	Rabbit
Clonality	Polyclonal
Isotype	IgG
Applications	WB, ICC/IF, IHC-P, IP
Reactivity	Human, Mouse

References (5)

★★★★★ Review (1)

Package

100 µl, 25 µl

Applications

Application Note

*Optimal dilutions/concentrations should be determined by the researcher.

Suggested dilution	Recommended dilution
WB	Assay dependent
ICC/IF	1:100-1:1000
IHC-P	1:100-1:1000
IP	1:100-1:500

Note : We would recommend using "Hot 1% SDS lysis buffer" to collect the sample lysates.

Not tested in other applications.

Calculated MW 106 kDa. ([Note](#))**Product Note** IP/MS validation is based on published data (PMID: 30377374).

Properties

Form	Liquid
Buffer	PBS, 20% Glycerol
Preservative	0.025% ProClin 300
Storage	Store as concentrated solution. Centrifuge briefly prior to opening vial. For short-term storage (1-2 weeks), store at 4°C. For long-term storage, aliquot and store at -20°C or below. Avoid multiple freeze-thaw cycles.
Concentration	0.66 mg/ml (Please refer to the vial label for the specific concentration.)
Immunogen	Recombinant protein encompassing a sequence within the C-terminus region of human Rb. The exact sequence is proprietary.
Purification	Purified by antigen-affinity chromatography.
Conjugation	Unconjugated



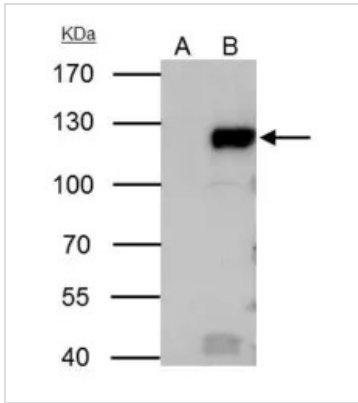
For full product information, images and publications, please visit our [website](#).

For laboratory research use only. Not for any clinical, therapeutic, or diagnostic use in humans or animals. Not for animal or human consumption.

Note

Purchasers shall not, and agree not to enable third parties to, analyze, copy, reverse engineer or otherwise attempt to determine the structure or sequence of the product.

DATA IMAGES



GTx100545 IP Image

Rb antibody immunoprecipitates retinoblastoma 1 protein in IP experiments.

IP samples: HeLa whole cell extract

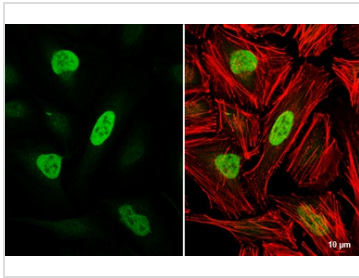
A. Control with 4 µg of preimmune Rabbit IgG

B. Immunoprecipitation of retinoblastoma 1 protein by 4 µg Rb antibody (GTx100545)

7.5 % SDS-PAGE

The immunoprecipitated retinoblastoma 1 protein was detected by Rb antibody (GTx100545) diluted at 1:500.

[EasyBlot anti-rabbit IgG (GTx221666-01) was used as a secondary reagent]



GTx100545 ICC/IF Image

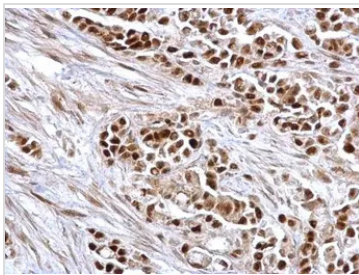
Rb antibody detects Rb protein at nucleus by immunofluorescent analysis.

Sample: HeLa cells were fixed in 4% paraformaldehyde at RT for 15 min.

Green: Rb stained by Rb antibody (GTx100545) diluted at 1:500.

Red: phalloidin, a cytoskeleton marker, diluted at 1:200.

Scale bar= 10 µm.



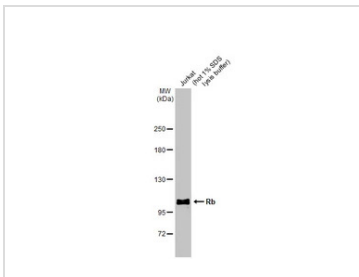
GTx100545 IHC-P Image

Rb antibody detects Rb protein at nucleus on human colon carcinoma by immunohistochemical analysis.

Sample: Paraffin-embedded human colon carcinoma.

Rb antibody (GTx100545) dilution: 1:500.

Antigen Retrieval: Trilogy™ (EDTA based, pH 8.0) buffer, 15min



GTx100545 WB Image

Whole cell extract (30 µg) was separated by 5% SDS-PAGE, and the membrane was blotted with Rb antibody (GTx100545) diluted at 1:3000. The HRP-conjugated anti-rabbit IgG antibody (GTx213110-01) was used to detect the primary antibody.



For full product information, images and publications, please visit our [website](https://www.genetex.com).