

CD133 antibody [C1C2], Internal

Cat. No. GTX100567

Host	Rabbit
Clonality	Polyclonal
Isotype	IgG
Applications	WB, ICC/IF, IHC-P, FCM
Reactivity	Human

References (13)

★★★★★ Review (2)

Package

100 µl, 25 µl

Applications

Application Note

*Optimal dilutions/concentrations should be determined by the researcher.

Suggested dilution	Recommended dilution
WB	1:500-1:10000
ICC/IF	Assay dependent
IHC-P	1:100-1:1000
FCM	Assay dependent

Not tested in other applications.

Calculated MW 97 kDa. ([Note](#))

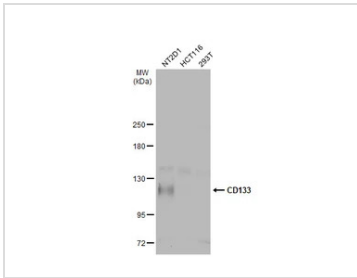
Properties

Form	Liquid
Buffer	PBS, 20% Glycerol
Preservative	0.01% Thimerosal
Storage	Store as concentrated solution. Centrifuge briefly prior to opening vial. For short-term storage (1-2 weeks), store at 4°C. For long-term storage, aliquot and store at -20°C or below. Avoid multiple freeze-thaw cycles.
Concentration	1 mg/ml (Please refer to the vial label for the specific concentration.)
Immunogen	Recombinant protein encompassing a sequence within the Extracellular domain of human CD133. The exact sequence is proprietary.
Purification	Purified by antigen-affinity chromatography.
Conjugation	Unconjugated
Note	For laboratory use only. Not for any clinical, therapeutic, or diagnostic use in humans or animals. Not for animal or human consumption.



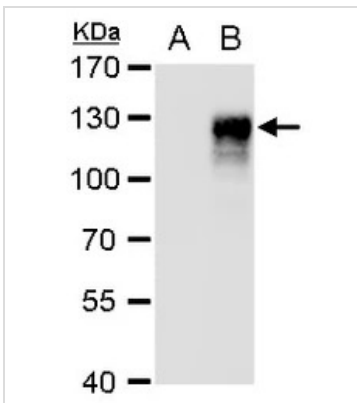
For full product information, images and publications, please visit our [website](#).

DATA IMAGES



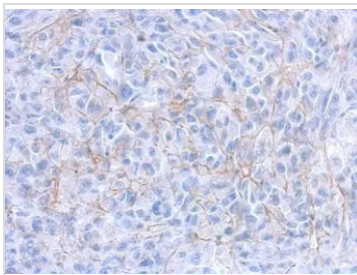
GTX100567 WB Image

Various whole cell extracts (30 µg) were separated by 5% SDS-PAGE, and the membrane was blotted with CD133 antibody [C1C2], Internal (GTX100567) diluted at 1:500. The HRP-conjugated anti-rabbit IgG antibody (GTX213110-01) was used to detect the primary antibody. The observed M.W. is based on the publication: [PMID: 29760280](https://pubmed.ncbi.nlm.nih.gov/29760280/)



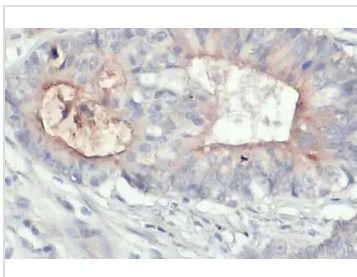
GTX100567 WB Image

CD133 antibody [C1C2], Internal detects CD133 protein by western blot analysis.
A. 30 µg 293T whole cell extract
B. 30 µg whole cell extract of 3xFlag-human CD133-transfected 293T cells
7.5 % SDS-PAGE
CD133 antibody [C1C2], Internal (GTX100567) dilution: 1:5000



GTX100567 IHC-P Image

Immunohistochemical analysis of paraffin-embedded SkHep1 xenograft, using CD133(GTX100567) antibody at 1:500 dilution.
Antigen Retrieval: Trilogy™ (EDTA based, pH 8.0) buffer, 15min



GTX100567 IHC-P Image

CD133 antibody [C1C2], Internal detects CD133 protein at cell membrane by immunohistochemical analysis.
Sample: Paraffin-embedded human colon cancer.
CD133 stained by CD133 antibody [C1C2], Internal (GTX100567) diluted at 1:500.
Antigen Retrieval: Citrate buffer, pH 6.0, 15 min



For full product information, images and publications, please visit our [website](https://www.genetex.com).