

TDP43 antibody

Cat. No. GTX100579

Host	Rabbit
Clonality	Polyclonal
Isotype	IgG
Applications	WB, ICC/IF, IHC-P
Reactivity	Human, Mouse, Rat

Package
100 µl, 25 µl

Applications

Application Note

*Optimal dilutions/concentrations should be determined by the researcher.

Suggested dilution	Recommended dilution
WB	1:500-1:3000
ICC/IF	1:100-1:1000
IHC-P	1:100-1:1000

Not tested in other applications.

Calculated MW 45 kDa. ([Note](#))

Properties

Form	Liquid
Buffer	PBS, 20% Glycerol
Preservative	0.01% Thimerosal
Storage	Store as concentrated solution. Centrifuge briefly prior to opening vial. For short-term storage (1-2 weeks), store at 4°C. For long-term storage, aliquot and store at -20°C or below. Avoid multiple freeze-thaw cycles.
Concentration	1 mg/ml (Please refer to the vial label for the specific concentration.)
Immunogen	Recombinant protein encompassing a sequence within the center region of human TDP43. The exact sequence is proprietary.
Purification	Affinity purified by Protein A.
Conjugation	Unconjugated

Note

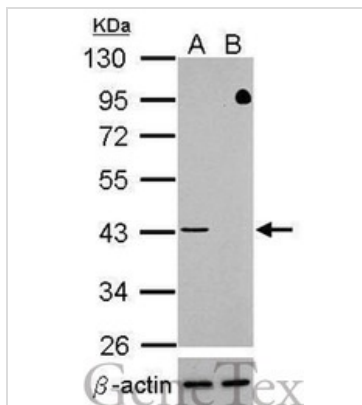
For laboratory research use only. Not for any clinical, therapeutic, or diagnostic use in humans or animals. Not for animal or human consumption.

Purchasers shall not, and agree not to enable third parties to, analyze, copy, reverse engineer or otherwise attempt to determine the structure or sequence of the product.



For full product information, images and publications, please visit our [website](#).

DATA IMAGES

**GTX100579 WB Image**

Western blot analysis of TDP-43 (GTX100579, upper panel) and beta-actin (GTX109639, lower panel)

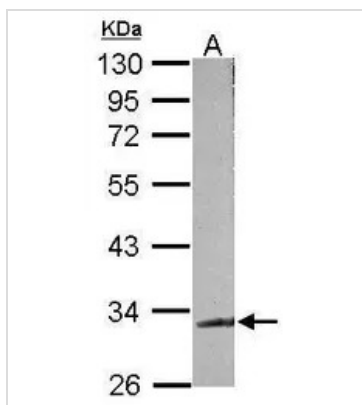
Sample (30 ug of whole cell lysate)

A: HeLa mock control

B: HeLa transfected shTDP-43

10% SDS PAGE

GTX100579 diluted at 1:500

**GTX100579 WB Image**

Sample (50 ug of whole cell lysate)

A: mouse brain

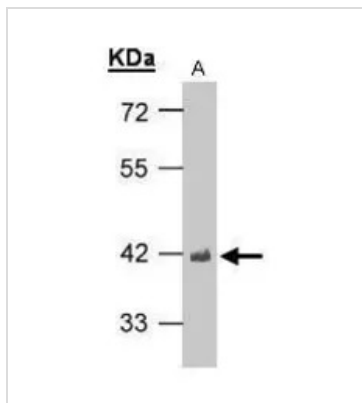
10% SDS PAGE

GTX100579 diluted at 1:500

**GTX100579 IHC-P Image**

Immunohistochemical analysis of paraffin-embedded rat brain, using TARDBP(GTX100579) antibody at 1:500 dilution.

Antigen Retrieval: Trilogy™ (EDTA based, pH 8.0) buffer, 15min

**GTX100579 WB Image**

Sample(30 µg of whole cell lysate)

A:H1299

10% SDS PAGE

GTX100579 diluted at 1:1000



For full product information, images and publications, please visit our [website](http://www.genetex.com).