

LYRIC antibody [N2C3]

Cat. No. GTX100587

| | |
|--------------|-------------------|
| Host | Rabbit |
| Clonality | Polyclonal |
| Isotype | IgG |
| Applications | WB, ICC/IF, IHC-P |
| Reactivity | Human, Mouse, Rat |

References (1)

Package

100 µl, 25 µl

Applications

Application Note

*Optimal dilutions/concentrations should be determined by the researcher.

| Suggested dilution | Recommended dilution |
|--------------------|----------------------|
| WB | 1:500-1:3000 |
| ICC/IF | 1:100-1:1000 |
| IHC-P | 1:100-1:1000 |

Not tested in other applications.

Calculated MW 64 kDa. ([Note](#))

Properties

| | |
|---------------|----------------------------------------------------------------------------------------------------------------------------------------------------------------------------------------------------------------------------|
| Form | Liquid |
| Buffer | 0.1M Tris, 0.1M Glycine, 10% Glycerol |
| Preservative | 0.01% Thimerosal |
| Storage | Store as concentrated solution. Centrifuge briefly prior to opening vial. For short-term storage (1-2 weeks), store at 4°C. For long-term storage, aliquot and store at -20°C or below. Avoid multiple freeze-thaw cycles. |
| Concentration | 0.69 mg/ml (Please refer to the vial label for the specific concentration.) |
| Immunogen | Recombinant protein encompassing a sequence within the center region of human LYRIC . The exact sequence is proprietary. |
| Purification | Purified by antigen-affinity chromatography. |
| Conjugation | Unconjugated |

Note

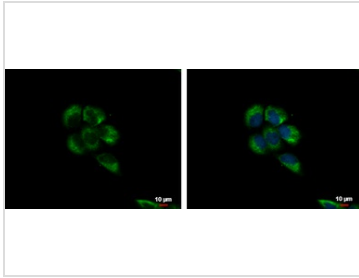
For laboratory research use only. Not for any clinical, therapeutic, or diagnostic use in humans or animals. Not for animal or human consumption.

Purchasers shall not, and agree not to enable third parties to, analyze, copy, reverse engineer or otherwise attempt to determine the structure or sequence of the product.



For full product information, images and publications, please visit our [website](#).

DATA IMAGES



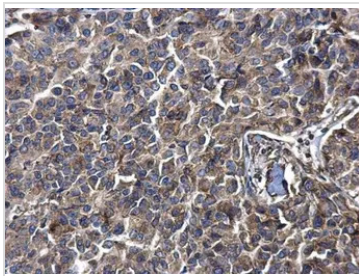
GTx100587 ICC/IF Image

LYRIC antibody [N2C3] detects LYRIC protein at cytoplasm and nucleus by immunofluorescent analysis.

Sample: A431 cells were fixed in 4% paraformaldehyde/PBS for 15 min.

Green: LYRIC protein stained by LYRIC antibody [N2C3] (GTx100587) diluted at 1:500.

Blue: Hoechst 33342 staining.



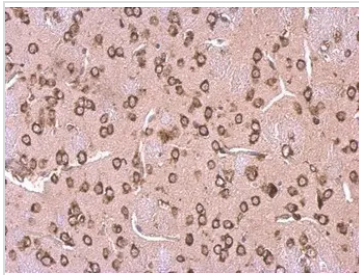
GTx100587 IHC-P Image

LYRIC antibody [N2C3] detects LYRIC protein at cytosol on human breast carcinoma by immunohistochemical analysis.

Sample: Paraffin-embedded human breast carcinoma.

LYRIC antibody [N2C3] (GTx100587) dilution: 1:500.

Antigen Retrieval: Trilogy™ (EDTA based, pH 8.0) buffer, 15min



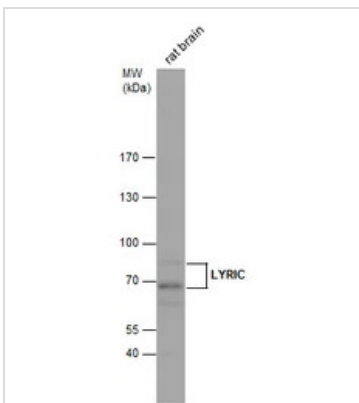
GTx100587 IHC-P Image

LYRIC antibody [N2C3] detects LYRIC protein at cytosol on mouse fore brain by immunohistochemical analysis.

Sample: Paraffin-embedded mouse fore brain.

LYRIC antibody [N2C3] (GTx100587) dilution: 1:500.

Antigen Retrieval: Trilogy™ (EDTA based, pH 8.0) buffer, 15min



GTx100587 WB Image

LYRIC antibody detects LYRIC protein by Western blot analysis. Rat tissue extracts (50 μg) was separated by 7.5 % SDS-PAGE, and the membrane was blotted with LYRIC antibody (GTx100587) diluted by 1:1000.

Observed TARGET protein has multiple bands at 68 kDa, and 80 kDa, possibly due to alternative splicing.

Reference: [Biochem Biophys Res Commun. 2008 Jun 27;371\(2\):333-8.](#)



For full product information, images and publications, please visit our [website](#).