

## LYRIC antibody [N2C3]

**Cat. No. GTX100587**

<b>Host</b>	Rabbit
<b>Clonality</b>	Polyclonal
<b>Isotype</b>	IgG
<b>Applications</b>	WB, ICC/IF, IHC-P
<b>Reactivity</b>	Human, Mouse, Rat

References ( 1 )

Package

100 µl, 25 µl

## Applications

**Application Note**

\*Optimal dilutions/concentrations should be determined by the researcher.

Suggested dilution	Recommended dilution
WB	1:500-1:3000
ICC/IF	1:100-1:1000
IHC-P	1:100-1:1000

Not tested in other applications.

**Calculated MW** 64 kDa. ( [Note](#) )

## Properties

<b>Form</b>	Liquid
<b>Buffer</b>	0.1M Tris, 0.1M Glycine, 10% Glycerol
<b>Preservative</b>	0.01% Thimerosal
<b>Storage</b>	Store as concentrated solution. Centrifuge briefly prior to opening vial. For short-term storage (1-2 weeks), store at 4°C. For long-term storage, aliquot and store at -20°C or below. Avoid multiple freeze-thaw cycles.
<b>Concentration</b>	0.69 mg/ml (Please refer to the vial label for the specific concentration.)
<b>Immunogen</b>	Recombinant protein encompassing a sequence within the center region of human LYRIC . The exact sequence is proprietary.
<b>Purification</b>	Purified by antigen-affinity chromatography.
<b>Conjugation</b>	Unconjugated

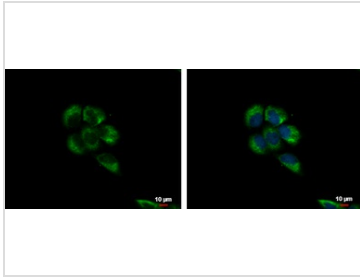
**Note**

For laboratory research use only. Not for any clinical, therapeutic, or diagnostic use in humans or animals. Not for animal or human consumption.

Purchasers shall not, and agree not to enable third parties to, analyze, copy, reverse engineer or otherwise attempt to determine the structure or sequence of the product.

For full product information, images and publications, please visit our [website](#).

## DATA IMAGES

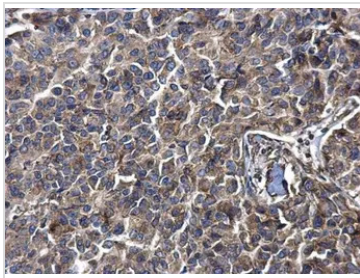
**GTX100587 ICC/IF Image**

LYRIC antibody [N2C3] detects LYRIC protein at cytoplasm and nucleus by immunofluorescent analysis.

Sample: A431 cells were fixed in 4% paraformaldehyde/PBS for 15 min.

Green: LYRIC protein stained by LYRIC antibody [N2C3] (GTX100587) diluted at 1:500.

Blue: Hoechst 33342 staining.

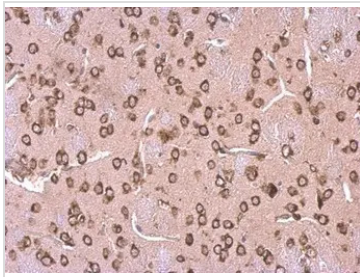
**GTX100587 IHC-P Image**

LYRIC antibody [N2C3] detects LYRIC protein at cytosol on human breast carcinoma by immunohistochemical analysis.

Sample: Paraffin-embedded human breast carcinoma.

LYRIC antibody [N2C3] (GTX100587) dilution: 1:500.

Antigen Retrieval: Trilogy™ (EDTA based, pH 8.0) buffer, 15min

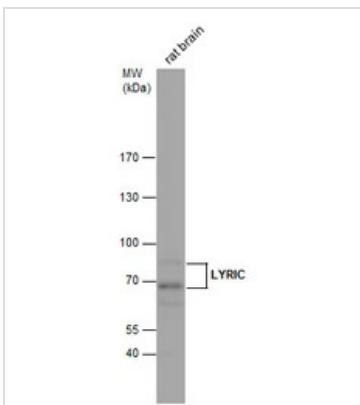
**GTX100587 IHC-P Image**

LYRIC antibody [N2C3] detects LYRIC protein at cytosol on mouse fore brain by immunohistochemical analysis.

Sample: Paraffin-embedded mouse fore brain.

LYRIC antibody [N2C3] (GTX100587) dilution: 1:500.

Antigen Retrieval: Trilogy™ (EDTA based, pH 8.0) buffer, 15min

**GTX100587 WB Image**

LYRIC antibody detects LYRIC protein by Western blot analysis. Rat tissue extracts (50 µg) was separated by 7.5 % SDS-PAGE, and the membrane was blotted with LYRIC antibody (GTX100587) diluted by 1:1000.

Observed TARGET protein has mutiple bands at 68 kDa, and 80 kDa, possibly due to alternative splicing.

Reference: [Biochem Biophys Res Commun. 2008 Jun 27;371\(2\):333-8.](#)



For full product information, images and publications, please visit our [website](#).