

UBE2C antibody [N1C3]

Cat. No. GTX100599

Host	Rabbit
Clonality	Polyclonal
Isotype	IgG
Applications	WB, ICC/IF
Reactivity	Human, Mouse

References (2)

Package

100 µl, 25 µl

Applications

Application Note

*Optimal dilutions/concentrations should be determined by the researcher.

Suggested dilution	Recommended dilution
WB	1:500-1:3000
ICC/IF	1:100-1:1000

Not tested in other applications.

Calculated MW 20 kDa. ([Note](#))

Properties

Form	Liquid
Buffer	0.1M Tris, 0.1M Glycine, 10% Glycerol
Preservative	0.01% Thimerosal
Storage	Store as concentrated solution. Centrifuge briefly prior to opening vial. For short-term storage (1-2 weeks), store at 4°C. For long-term storage, aliquot and store at -20°C or below. Avoid multiple freeze-thaw cycles.
Concentration	1 mg/ml (Please refer to the vial label for the specific concentration.)
Immunogen	Recombinant protein encompassing a sequence within the center region of human UBE2C. The exact sequence is proprietary.
Purification	Purified by antigen-affinity chromatography.
Conjugation	Unconjugated

Note

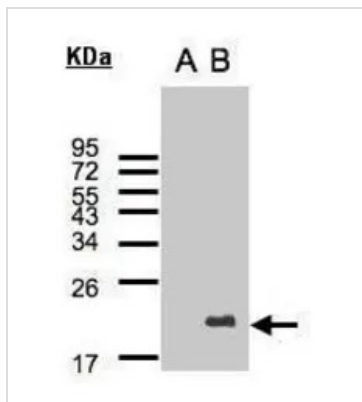
For laboratory research use only. Not for any clinical, therapeutic, or diagnostic use in humans or animals. Not for animal or human consumption.

Purchasers shall not, and agree not to enable third parties to, analyze, copy, reverse engineer or otherwise attempt to determine the structure or sequence of the product.



For full product information, images and publications, please visit our [website](#).

DATA IMAGES



GTx100599 WB Image

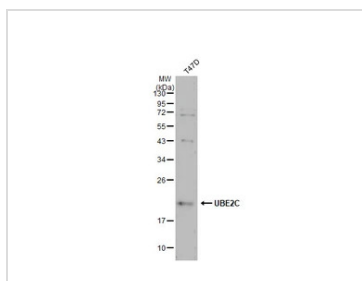
Western Blot analysis of UBE2C expression in transfected 293T cell line by UBE2C polyclonal antibody.

A: Non-transfected lysate.

B: UBE2C transfected lysate.

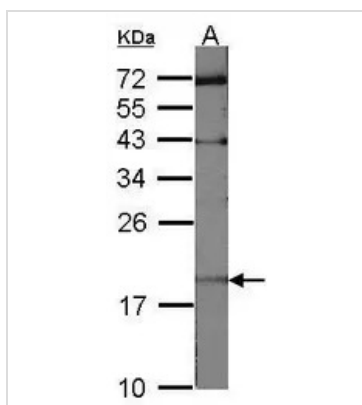
12% SDS PAGE

GTx100599 diluted at 1:500



GTx100599 WB Image

Whole cell extract (30 µg) was separated by 12% SDS-PAGE, and the membrane was blotted with UBE2C antibody [N1C3] (GTx100599) diluted at 1:1000. The HRP-conjugated anti-rabbit IgG antibody (GTx213110-01) was used to detect the primary antibody.



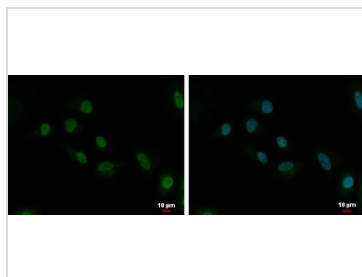
GTx100599 WB Image

Sample (30 ug of whole cell lysate)

A:NIH-3T3

12% SDS PAGE

GTx100599 diluted at 1:1000



GTx100599 ICC/IF Image

UBE2C antibody [N1C3] detects UBE2C protein at cytoplasm and nucleus by immunofluorescent analysis.

Sample: A549 cells were fixed in 4% paraformaldehyde at RT for 15 min.

Green: UBE2C protein stained by UBE2C antibody [N1C3] (GTx100599) diluted at 1:500.

Blue: Hoechst 33342 staining.

Scale bar = 10 µm.



For full product information, images and publications, please visit our [website](https://www.genetex.com).