

## SOCS1 antibody

Cat. No. GTX100657

Host	Rabbit
Clonality	Polyclonal
Isotype	IgG
Applications	WB, ICC/IF, IHC-P
Reactivity	Human, Mouse

References ( 5 )

★★★★☆ Review ( 1 )

Package

100 µl, 25 µl

## Applications

## Application Note

\*Optimal dilutions/concentrations should be determined by the researcher.

Suggested dilution	Recommended dilution
WB	1:500-1:3000
ICC/IF	1:100-1:1000
IHC-P	1:100-1:1000

Not tested in other applications.

Calculated MW 24 kDa. ( [Note](#) )

## Properties

Form	Liquid
Buffer	0.1M Tris, 0.1M Glycine, 10% Glycerol
Preservative	0.01% Thimerosal
Storage	Store as concentrated solution. Centrifuge briefly prior to opening vial. For short-term storage (1-2 weeks), store at 4°C. For long-term storage, aliquot and store at -20°C or below. Avoid multiple freeze-thaw cycles.
Concentration	1 mg/ml (Please refer to the vial label for the specific concentration.)
Immunogen	Carrier-protein conjugated synthetic peptide encompassing a sequence within the C-terminus region of human SOCS1. The exact sequence is proprietary.
Purification	Purified by antigen-affinity chromatography.
Conjugation	Unconjugated

## Note

For laboratory research use only. Not for any clinical, therapeutic, or diagnostic use in humans or animals. Not for animal or human consumption.

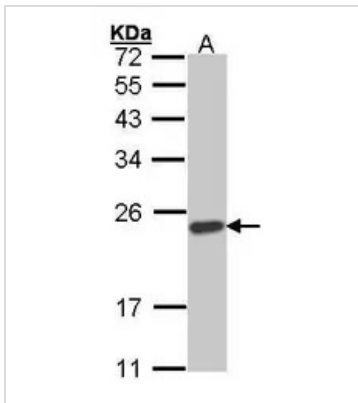
Purchasers shall not, and agree not to enable third parties to, analyze, copy, reverse engineer or otherwise attempt to determine the structure or sequence of the product.



For full product information, images and publications, please visit our [website](#).

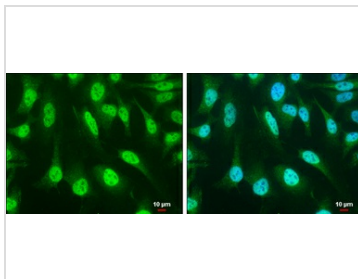
Date 2025 / 07 / 21 Page 1 of 2

## DATA IMAGES



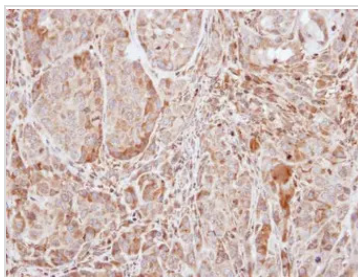
### GTx100657 WB Image

Sample (30 ug of whole cell lysate)  
 A: Hep G2 (GTx27900)  
 12% SDS PAGE  
 GTx100657 diluted at 1:1000



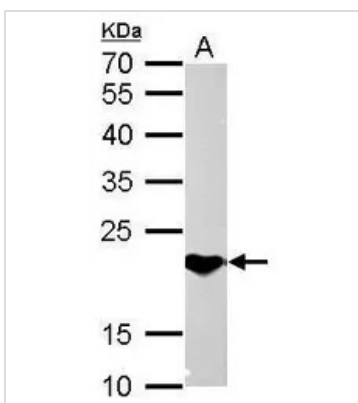
### GTx100657 ICC/IF Image

SOCS1 antibody detects SOCS1 protein at cytoplasm and nucleus by immunofluorescent analysis.  
 Sample: HeLa cells were fixed in 4% paraformaldehyde at RT for 15 min.  
 Green: SOCS1 protein stained by SOCS1 antibody (GTx100657) diluted at 1:200.  
 Blue: Hoechst 33342 staining.  
 Scale bar = 10 μm.



### GTx100657 IHC-P Image

Immunohistochemical analysis of paraffin-embedded A549 xenograft, using SOCS1(GTx100657) antibody at 1:100 dilution.  
 Antigen Retrieval: Trilogy™ (EDTA based, pH 8.0) buffer, 15min



### GTx100657 WB Image

SOCS1 antibody detects SOCS1 protein by Western blot analysis.  
 A. 50 μg mouse brain lysate/extract  
 12 % SDS-PAGE  
 SOCS1 antibody (GTx100657) dilution: 1:2000



For full product information, images and publications, please visit our [website](https://www.genetex.com).