

MMP13 antibody [N3C1], Internal

Cat. No. GTX100665

| | |
|--------------|---------------------------|
| Host | Rabbit |
| Clonality | Polyclonal |
| Isotype | IgG |
| Applications | WB, ICC/IF, IHC-P, IHC-Fr |
| Reactivity | Human, Mouse, Rat |

References (21)

★★★★★ Review (3)

Package

100 µl, 25 µl

Applications

Application Note

*Optimal dilutions/concentrations should be determined by the researcher.

| Suggested dilution | Recommended dilution |
|--------------------|----------------------|
| WB | 1:500-1:3000 |
| ICC/IF | 1:100-1:1000 |
| IHC-P | 1:100-1:1000 |
| IHC-Fr | Assay dependent |

Not tested in other applications.

Calculated MW 54 kDa. ([Note](#))

Properties

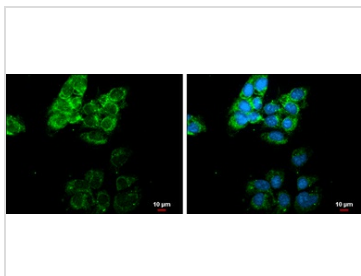
| | |
|---------------|--|
| Form | Liquid |
| Buffer | PBS, 20% Glycerol |
| Preservative | 0.025% ProClin 300 |
| Storage | Store as concentrated solution. Centrifuge briefly prior to opening vial. For short-term storage (1-2 weeks), store at 4°C. For long-term storage, aliquot and store at -20°C or below. Avoid multiple freeze-thaw cycles. |
| Concentration | 0.56 mg/ml (Please refer to the vial label for the specific concentration.) |
| Immunogen | Carrier-protein conjugated synthetic peptide encompassing a sequence within the center region of human MMP13. The exact sequence is proprietary. |
| Purification | Purified by antigen-affinity chromatography. |
| Conjugation | Unconjugated |

For full product information, images and publications, please visit our [website](#).

For laboratory research use only. Not for any clinical, therapeutic, or diagnostic use in humans or animals. Not for animal or human consumption.

Note

Purchasers shall not, and agree not to enable third parties to, analyze, copy, reverse engineer or otherwise attempt to determine the structure or sequence of the product.

DATA IMAGES

GTX100665 ICC/IF Image

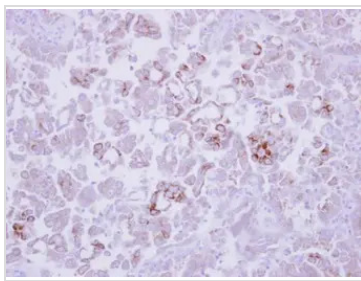
MMP13 antibody [N3C1], Internal detects MMP13 protein at cytoplasm by immunofluorescent analysis.

Sample: NT2D1 cells were fixed in ice-cold MeOH for 5 min.

Green: MMP13 protein stained by MMP13 antibody [N3C1], Internal (GTX100665) diluted at 1:500.

Blue: Hoechst 33342 staining.

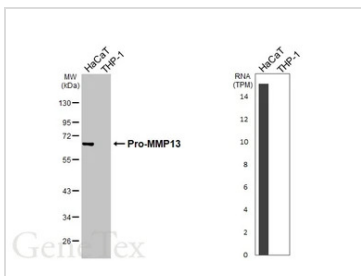
Scale bar = 10 μ m.


GTX100665 IHC-P Image

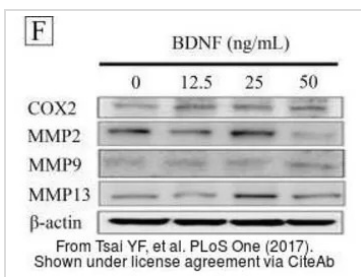
Immunohistochemical analysis of paraffin-embedded human lung adenocarcinoma, using

MMP13(GTX100665) antibody at 1:250 dilution.

Antigen Retrieval: Trilogy™ (EDTA based, pH 8.0) buffer, 15min


GTX100665 WB Image

Various whole cell extracts (30 μ g) were separated by 10% SDS-PAGE, and the membrane was blotted with MMP13 antibody [N3C1], Internal (GTX100665) diluted at 1:1000. The HRP-conjugated anti-rabbit IgG antibody (GTX213110-01) was used to detect the primary antibody. Corresponding RNA expression data for the same cell lines are based on Human Protein Atlas program.


GTX100665 WB Image

The data was published in the journal PLoS One in 2017. [PMID: 28604807](https://pubmed.ncbi.nlm.nih.gov/28604807/)



For full product information, images and publications, please visit our [website](https://www.genetex.com).