

# C/EBP alpha antibody [N1], N-term

**Cat. No. GTX100674**

<b>Host</b>	Rabbit
<b>Clonality</b>	Polyclonal
<b>Isotype</b>	IgG
<b>Applications</b>	WB, IHC-P, IP, ChIP assay
<b>Reactivity</b>	Human, Mouse, Sheep

References ( 8 )

★★★★☆ Review ( 2 )

Package

100 µl, 25 µl

## Applications

### Application Note

\*Optimal dilutions/concentrations should be determined by the researcher.

Suggested dilution	Recommended dilution
WB	1:500-1:3000
IHC-P	Assay dependent
IP	1:100-1:500
ChIP assay	Assay dependent

Not tested in other applications.

**Calculated MW** 38 kDa. ( [Note](#) )

## Properties

<b>Form</b>	Liquid
<b>Buffer</b>	PBS, 20% Glycerol
<b>Preservative</b>	0.025% ProClin 300
<b>Storage</b>	Store as concentrated solution. Centrifuge briefly prior to opening vial. For short-term storage (1-2 weeks), store at 4°C. For long-term storage, aliquot and store at -20°C or below. Avoid multiple freeze-thaw cycles.
<b>Concentration</b>	0.59 mg/ml (Please refer to the vial label for the specific concentration.)
<b>Immunogen</b>	Carrier-protein conjugated synthetic peptide encompassing a sequence within the N-terminus region of human C/EBP alpha. The exact sequence is proprietary.
<b>Purification</b>	Purified by antigen-affinity chromatography.
<b>Conjugation</b>	Unconjugated

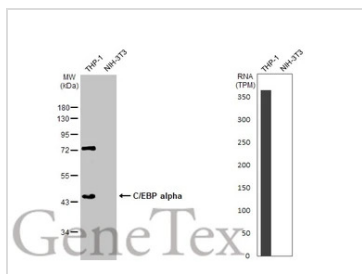


For full product information, images and publications, please visit our [website](#).

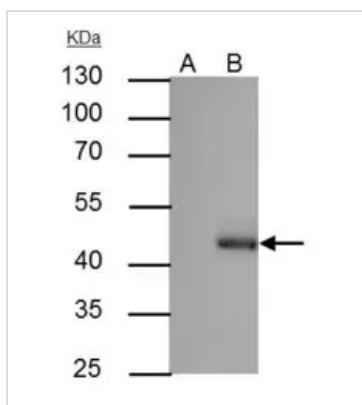
For laboratory research use only. Not for any clinical, therapeutic, or diagnostic use in humans or animals. Not for animal or human consumption.

**Note**

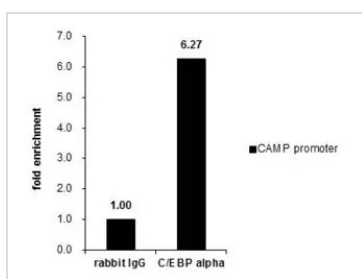
Purchasers shall not, and agree not to enable third parties to, analyze, copy, reverse engineer or otherwise attempt to determine the structure or sequence of the product.

**DATA IMAGES**

**GTX100674 WB Image**

Various whole cell extracts (30 µg) were separated by 10% SDS-PAGE, and the membrane was blotted with C/EBP alpha antibody [N1], N-term (GTX100674) diluted at 1:1000. The HRP-conjugated anti-rabbit IgG antibody (GTX213110-01) was used to detect the primary antibody. Corresponding RNA expression data for the same cell lines are based on Human Protein Atlas program.


**GTX100674 IP Image**

C/EBP alpha antibody immunoprecipitates C/EBP alpha protein in IP experiments. IP Sample: HepG2 whole cell lysate/extract A : Control with 3 µg of pre-immune rabbit IgG B : Immunoprecipitation of C/EBP alpha by 3 µg of C/EBP alpha antibody (GTX100674) 10% SDS-PAGE The immunoprecipitated C/EBP alpha protein was detected by C/EBP alpha antibody (GTX100674) diluted at 1:500. EasyBlot anti-rabbit IgG (HRP) (GTX221666-01) was used as a secondary reagent.


**GTX100674 ChIP assay Image**

Cross-linked ChIP was performed with A549 chromatin extract and 5 µg of either control rabbit IgG or anti-C/EBP alpha antibody. The precipitated DNA was detected by PCR with primer set targeting to CAMP promoter.

ChIP experiment and primer designs are based on [FASEB J. 2005 Jul;19\(9\):1067-77](https://pubs.ascp.jci.org/doi/10.1172/JCI19977).



For full product information, images and publications, please visit our [website](https://www.genetex.com).