

C/EBP beta antibody

Cat. No. GTX100675

Host	Rabbit
Clonality	Polyclonal
Isotype	IgG
Applications	WB, ICC/IF, IHC-P, IP, ChIP assay, IHC
Reactivity	Human

References (10)

Package

100 µl, 25 µl

Applications

Application Note

*Optimal dilutions/concentrations should be determined by the researcher.

Suggested dilution	Recommended dilution
WB	1:500-1:3000
ICC/IF	1:100-1:1000
IHC-P	1:100-1:1000
IP	1:100-1:500
ChIP assay	Assay dependent
IHC	Assay dependent

Not tested in other applications.

Calculated MW 36 kDa. ([Note](#))

Product Note KO/KD validation is based on published data (PMID: 26046540).

Properties

Form	Liquid
Buffer	PBS, 20% Glycerol
Preservative	0.025% ProClin 300
Storage	Store as concentrated solution. Centrifuge briefly prior to opening vial. For short-term storage (1-2 weeks), store at 4°C. For long-term storage, aliquot and store at -20°C or below. Avoid multiple freeze-thaw cycles.
Concentration	0.94 mg/ml (Please refer to the vial label for the specific concentration.)
Immunogen	Carrier-protein conjugated synthetic peptide encompassing a sequence within the N-terminus region of human C/EBP beta. The exact sequence is proprietary.
Purification	Purified by antigen-affinity chromatography.

For full product information, images and publications, please visit our [website](#).

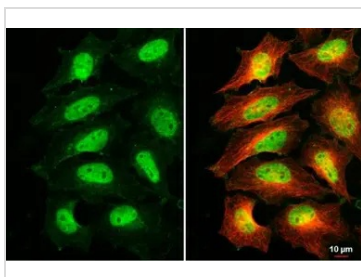
Conjugation

Unconjugated

Note

For laboratory research use only. Not for any clinical, therapeutic, or diagnostic use in humans or animals. Not for animal or human consumption.

Purchasers shall not, and agree not to enable third parties to, analyze, copy, reverse engineer or otherwise attempt to determine the structure or sequence of the product.

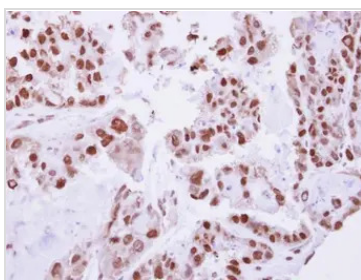
DATA IMAGES

GTX100675 ICC/IF Image

C/EBP beta antibody detects C/EBP beta protein at cytoplasm and nucleus by immunofluorescent analysis.

Sample: HeLa cells were fixed in 4% paraformaldehyde at RT for 15 min.

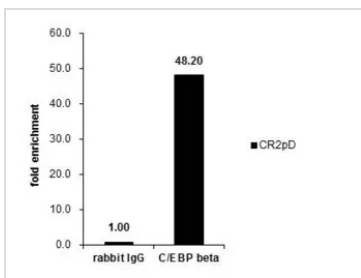
Green: C/EBP beta stained by C/EBP beta antibody (GTX100675) diluted at 1:500.

Red: alpha Tubulin, a cytoskeleton marker, stained by alpha Tubulin antibody [GT114] (GTX628802) diluted at 1:1000.


GTX100675 IHC-P Image

Immunohistochemical analysis of paraffin-embedded human ovarian cancer, using C/EBP beta(GTX100675) antibody at 1:250 dilution.

Antigen Retrieval: Trilogy™ (EDTA based, pH 8.0) buffer, 15min


GTX100675 ChIP assay Image

Cross-linked ChIP was performed with Raji chromatin extract and 5 µg of either control rabbit IgG or anti-C/EBP beta antibody. The precipitated DNA was detected by PCR with primer set targeting to CR2pD.

ChIP experiment and primer designs are based on [Mol Immunol. 2009 Aug;46\(13\):2613-22.](#)



For full product information, images and publications, please visit our [website](#).