

SQSTM1 / P62 antibody [N3C1], Internal

Cat. No. GTX100685

Host	Rabbit
Clonality	Polyclonal
Isotype	IgG
Applications	WB, ICC/IF, IHC-P, FCM, IP, PLA
Reactivity	Human, Mouse, Rat, Zebrafish, Bovine, Honeybee, Mosquito

References (112)

★★★★★ Review (6)

Package

100 µl, 25 µl

PRODUCT

Summary

SQSTM1 antibody, also known as ubiquitin-binding protein p62 antibody, detects the SQSTM1 protein that interacts with LC3 proteins to execute autophagosomal degradation. SQSTM1 is also reported to regulate the activation of NFκB1 downstream signaling in addition to having other cellular functions.

Applications

Application Note

*Optimal dilutions/concentrations should be determined by the researcher.

Suggested dilution	Recommended dilution
WB	1:500-1:3000
ICC/IF	1:100-1:1000
IHC-P	1:100-1:1000
FCM	1:50-1:200
IP	1:100-1:500
PLA	Assay dependent

Not tested in other applications.

Calculated MW 48 kDa. ([Note](#))

Properties

Form	Liquid
Buffer	PBS, 1% BSA, 20% Glycerol
Preservative	0.025% ProClin 300
Storage	Store as concentrated solution. Centrifuge briefly prior to opening vial. For short-term storage (1-2 weeks), store at 4°C. For long-term storage, aliquot and store at -20°C or below. Avoid multiple freeze-thaw cycles.
Concentration	0.39 mg/ml (Please refer to the vial label for the specific concentration.)
Immunogen	Carrier-protein conjugated synthetic peptide encompassing a sequence within the center region of human SQSTM1 / P62. The exact sequence is proprietary.



For full product information, images and publications, please visit our [website](#).

Date 2026 / 02 / 22 Page 1 of 2

Purification Purified by antigen-affinity chromatography.

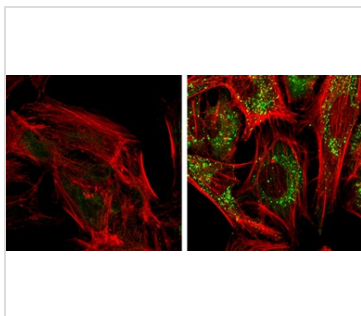
Conjugation Unconjugated

Note

For laboratory research use only. Not for any clinical, therapeutic, or diagnostic use in humans or animals. Not for animal or human consumption.

Purchasers shall not, and agree not to enable third parties to, analyze, copy, reverse engineer or otherwise attempt to determine the structure or sequence of the product.

DATA IMAGES



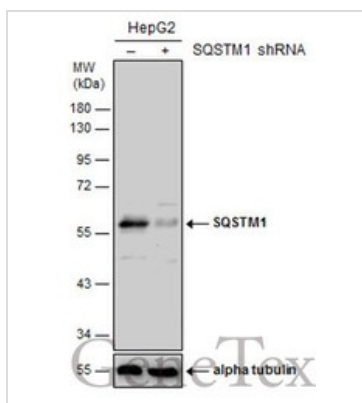
GTx100685 ICC/IF Image

SQSTM1 antibody [N3C1], Internal detects SQSTM1 protein at autophagosome by immunofluorescent analysis.

Samples: HeLa cells mock (left) and treated with 50 μM Chloroquine for 24 hr (right) were fixed in 4% paraformaldehyde at RT for 15 min.

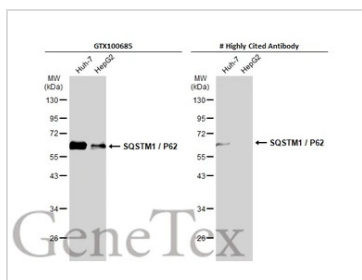
Green: SQSTM1 protein stained by SQSTM1 antibody [N3C1], Internal (GTx100685) diluted at 1:1000.

Red: Phalloidin, a F-actin marker.



GTx100685 WB Image

Non-transfected (-) and transfected (+) HepG2 whole cell extracts (30 μg) were separated by 10% SDS-PAGE, and the membrane was blotted with SQSTM1 antibody [N3C1], Internal (GTx100685) diluted at 1:500. The HRP-conjugated anti-rabbit IgG antibody (GTx213110-01) was used to detect the primary antibody.



GTx100685 WB Image

Various whole cell extracts (30 μg) were separated by 10% SDS-PAGE, and the membrane was blotted with SQSTM1 / P62 antibody [N3C1], Internal (GTx100685) diluted at 1:500. The HRP-conjugated anti-rabbit IgG antibody (GTx213110-01) was used to detect the primary antibody.

*The competitor is not affiliated with GeneTex and does not endorse this product.



For full product information, images and publications, please visit our [website](https://www.genetex.com).