

## Hice1 antibody

**Cat. No. GTX100735**

<b>Host</b>	Rabbit
<b>Clonality</b>	Polyclonal
<b>Isotype</b>	IgG
<b>Applications</b>	WB, ICC/IF, IHC-P, IP
<b>Reactivity</b>	Human

References ( 1 )

Package

100 µl, 25 µl

## PRODUCT

## Summary

HICE1 antibody recognizes HICE1 protein encoded by the human HAUS8 gene. HICE1 is a subunit of the microtubule-associated HAUS augmin-like complex, which is involved in maintenance of spindle integrity and microtubule nucleation during spindle assembly. Disruption of HICE1 results in abnormal spindle configuration, mitotic delay, and chromosomal instability.

## Applications

## Application Note

\*Optimal dilutions/concentrations should be determined by the researcher.

Suggested dilution	Recommended dilution
WB	1:500-1:3000
ICC/IF	1:100-1:1000
IHC-P	1:50-1:500
IP	1:100-1:500

Not tested in other applications.

**Calculated MW** 45 kDa. ( [Note](#) )

## Properties

<b>Form</b>	Liquid
<b>Buffer</b>	0.1M Tris, 0.1M Glycine, 10% Glycerol
<b>Preservative</b>	0.01% Thimerosal
<b>Storage</b>	Store as concentrated solution. Centrifuge briefly prior to opening vial. For short-term storage (1-2 weeks), store at 4°C. For long-term storage, aliquot and store at -20°C or below. Avoid multiple freeze-thaw cycles.
<b>Concentration</b>	0.17 mg/ml (Please refer to the vial label for the specific concentration.)
<b>Immunogen</b>	Recombinant protein corresponding to human HICE1
<b>Purification</b>	Purified by antigen-affinity chromatography.



For full product information, images and publications, please visit our [website](#).

Date 2026 / 04 / 11 Page 1 of 2

**Conjugation**

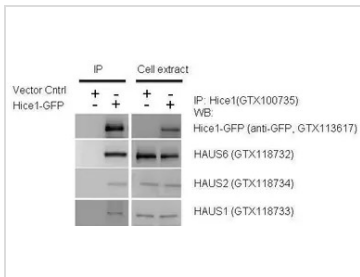
Unconjugated

**Note**

For laboratory research use only. Not for any clinical, therapeutic, or diagnostic use in humans or animals. Not for animal or human consumption.

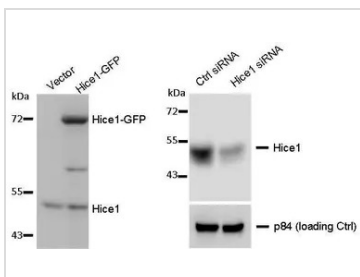
Purchasers shall not, and agree not to enable third parties to, analyze, copy, reverse engineer or otherwise attempt to determine the structure or sequence of the product.

DATA IMAGES



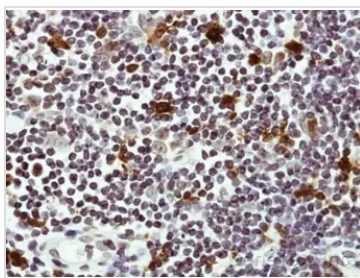
**GTX100735 IP Image**

IP-WB assay to show that Hice1 (GTX113617) co-immunoprecipitated with other Augmin components HAUS6 (GTX118732), HAUS2 (GTX118734) and HAUS1 (GTX118733) in U2OS cells.



**GTX100735 WB Image**

WB to detect cellular Hice1 and Hice1-GFP expressed in human osteosarcoma U2OS cells (left image), and Hice1 upon siRNA treatment (right image), using GTX100735 at 1:1000 dilution. Nuclear matrix protein p84 is a loading control, blotted with p84 antibody (clone 5E10) GTX70220 at 1:5000 dilution. The HRP-conjugated anti-rabbit IgG antibody (GTX213110-01) was used to detect the primary antibody.



**GTX100735 IHC-P Image**

Immunohistochemical analysis of paraffin-embedded Human Lymph tissue, using HICE1 (GTX100735) antibody at 1:50 dilution.

Antigen Retrieval: Trilogy™ (EDTA based, pH 8.0) buffer, 15min



For full product information, images and publications, please visit our [website](#).