

TMPRSS2 antibody [N2C3]

Cat. No. GTX100743

Host	Rabbit
Clonality	Polyclonal
Isotype	IgG
Applications	WB, ICC/IF, IHC-P
Reactivity	Human

References (9)

Package

100 µl, 25 µl

Applications

Application Note

*Optimal dilutions/concentrations should be determined by the researcher.

Suggested dilution	Recommended dilution
WB	1:500-1:3000
ICC/IF	Assay dependent
IHC-P	Assay dependent

Not tested in other applications.

Calculated MW 54 kDa. ([Note](#))

Properties

Form	Liquid
Buffer	PBS
Preservative	No preservatives
Storage	Store as concentrated solution. Centrifuge briefly prior to opening vial. For short-term storage (1-2 weeks), store at 4°C. For long-term storage, aliquot and store at -20°C or below. Avoid multiple freeze-thaw cycles.
Concentration	1 mg/ml (Please refer to the vial label for the specific concentration.)
Immunogen	Recombinant protein encompassing a sequence within the Extracellular domain of human TMPRSS2. The exact sequence is proprietary.
Purification	Purified by antigen-affinity chromatography.
Conjugation	Unconjugated

Note

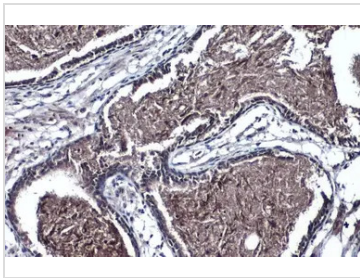
For laboratory research use only. Not for any clinical, therapeutic, or diagnostic use in humans or animals. Not for animal or human consumption.

Purchasers shall not, and agree not to enable third parties to, analyze, copy, reverse engineer or otherwise attempt to determine the structure or sequence of the product.



For full product information, images and publications, please visit our [website](#).

DATA IMAGES

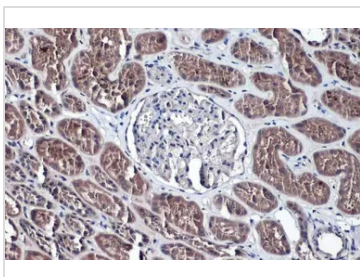
**GTX100743 IHC-P Image**

TMPRSS2 antibody [N2C3] detects TMPRSS2 protein at cytoplasm by immunohistochemical analysis.

Sample: Paraffin-embedded human prostate.

TMPRSS2 stained by TMPRSS2 antibody [N2C3] (GTX100743) diluted at 1:500.

Antigen Retrieval: Citrate buffer, pH 6.0, 15 min

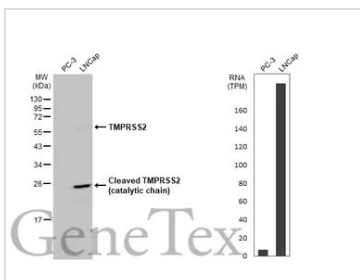
**GTX100743 IHC-P Image**

TMPRSS2 antibody [N2C3] detects TMPRSS2 protein at cytoplasm by immunohistochemical analysis.

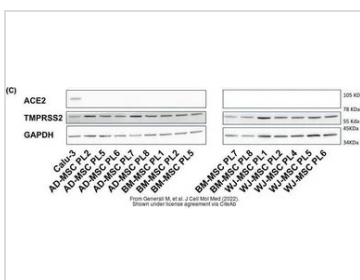
Sample: Paraffin-embedded human kidney.

TMPRSS2 stained by TMPRSS2 antibody [N2C3] (GTX100743) diluted at 1:500.

Antigen Retrieval: Citrate buffer, pH 6.0, 15 min

**GTX100743 WB Image**

Various whole cell extracts (30 µg) were separated by 12% SDS-PAGE, and the membrane was blotted with TMPRSS2 antibody [N2C3] (GTX100743) diluted at 1:1000. The HRP-conjugated anti-rabbit IgG antibody (GTX213110-01) was used to detect the primary antibody. Corresponding RNA expression data for the same cell lines are based on Human Protein Atlas program.

**GTX100743 WB Image**

The data was published in the 2022 in J Cell Mol Med. [PMID: 34821008](https://pubmed.ncbi.nlm.nih.gov/34821008/)



For full product information, images and publications, please visit our [website](https://www.genetex.com).